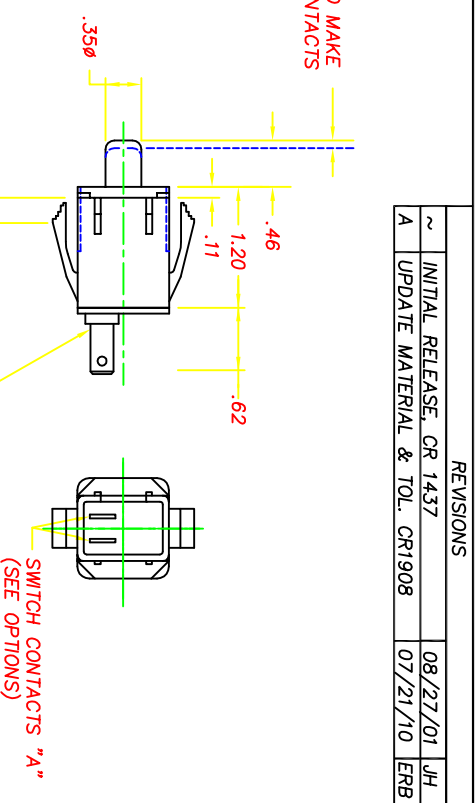
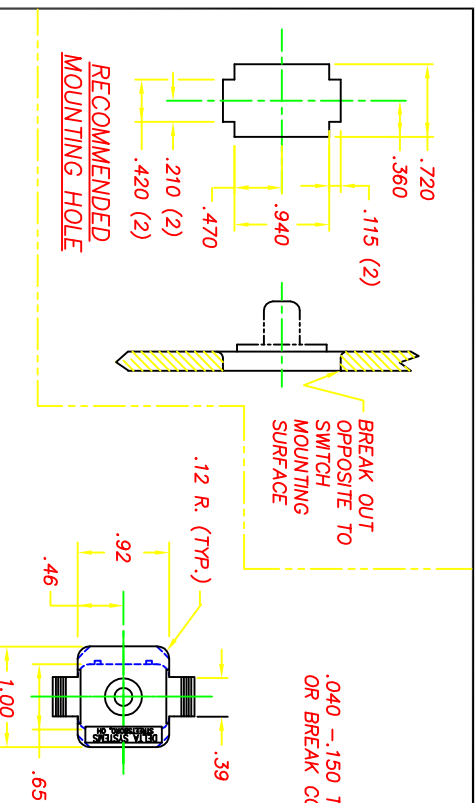
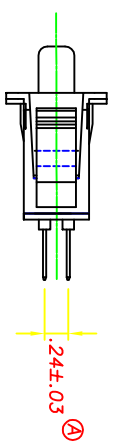


REVISIONS			
~	INITIAL RELEASE, CR 1437	08/27/01	JH
A	UPDATE MATERIAL & TOL. CR1908	07/21/10	ERB



DSI P/N	SWITCH "A"	COLOR
6700-30	N.C.	GRAY HSG & PLUNGER, BLACK BACK COVER
6700-31	N.C.	GRAY HOUSING, PLUNGER & BACK COVER

OPTIONS & COLOR



NOTES:

- 1-"NC" STAMPED ON ALL NORMALLY CLOSED TERMINALS.
- 2-PLASTIC PARTS-POLYPROPYLENE TERMINALS-NICKEL PLATED BRASS.
- 3-DATE CODE INDICATING YEAR, MONTH, AND DAY OF MONTH MANUFACTURED STAMPED ON HOUSING.
- 4-INTEGRITY OF WELD AND SWITCH FUNCTIONALITY TESTED AFTER ASSEMBLY.
- 5-THIS PRODUCT COVERED BY THE FOLLOWING U.S. PATENT: 4,812,604. OTHER PATENTS APPLIED FOR.

DELTA SYSTEMS, INC. DOES NOT ASSUME ANY LIABILITY ARISING OUT OF THE MISAPPLICATION OF ANY PRODUCT		UNLESS OTHERWISE SPECIFIED DIMENSIONS ARE IN INCHES TOLERANCES ARE: .004 .006 .008	
COMPUTER GENERATED DRAWING - NO MANUAL CHANGES ALLOWED		DO NOT SCALE DRAWING	
DATE	05/30/01	DATE	08/27/01
DRWN	DNR	CHECKED	JH
FINISH SEE OPTION TABLE		MATERIAL SEE NOTE 2	
SCALE	FULL	SIZE	B
PROJECT NO.	EX-366	DWG. NO.	6700-30, 31
REV	A	TITLE: 6700 SERIES PLUNGER SWITCH, SINGLE POLE - SNAP MOUNT	
DELTA SYSTEMS INC. STREETSBORO, OHIO 44241			