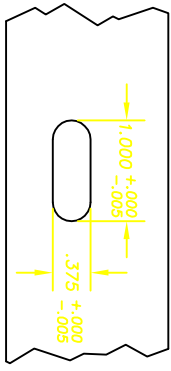
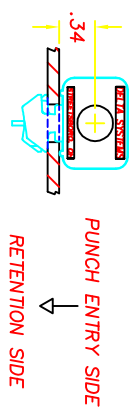


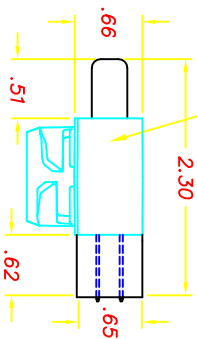
REVISIONS	10/22/98	JH
~	RELEASED FROM EX, CR 1221	



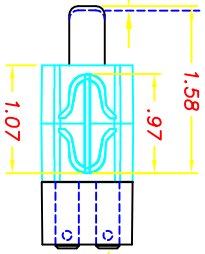
RECOMMENDED MOUNTING SLOT
 SWITCH WILL ACCEPT .108 & .170 PANEL THICKNESSES INCLUDING PAINT, DECALS, ETC.
 *SQUARE EDGE REQUIRED ON WING RETENTION SIDE OF SLOT



PUNCH ENTRY SIDE
 RETENTION SIDE
 .040- .150 TO MAKE OR BREAK CONTACTS

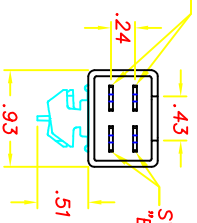


DATE CODE STAMPED ON BODY OF SWITCH



.250 x .032 MALE TERMINALS (4)
 MATE WITH PACKARD 56 SERIES FEMALE. (NOTE 2)

SWITCH CONTACTS "A" - (N.C.) (NOTE 1)



ISOMETRIC VIEW

SWITCH CONTACTS "B" - (N.C.)

NOTES:

- 1-"NC" STAMPED ON ALL NORMALLY CLOSED TERMINALS
- 2-TERMINALS ARE NICKEL PLATED
- 3-PLASTIC PARTS ARE DELTON™, UV STABLE, FUEL RESISTANT THERMOPLASTIC
- 4-DATE CODE INDICATING YEAR, MONTH, AND DAY OF MONTH MANUFACTURED STAMPED ON HOUSING.
- 5-INTEGRITY OF WELD & SWITCH FUNCTIONALITY TESTED AFTER ASSEMBLY.
- 6-THIS PRODUCT COVERED BY ONE OR MORE OF THE FOLLOWING U.S. PATENTS: 5,221,816; 5,424,502; 4,812,604, OTHER PATENTS APPLIED FOR.

DELTA SYSTEMS, INC. DOES NOT ASSUME ANY LIABILITY ARISING OUT OF THE MISAPPLICATION OF ANY PRODUCT

UNLESS OTHERWISE SPECIFIED DIMENSIONS ARE IN INCHES TOLERANCES ARE:

XXXX	.02	XXXX	.005	XXXX	1"
------	-----	------	------	------	----

COMPUTER GENERATED DRAWING - NO MANUAL CHANGES ALLOWED

DO NOT SCALE DRAWING

DATE	10/16/96
CHECKED	LMM
DATE	10/17/96
MATERIAL	AS NOTED
FINISH	GRAY

DELTA SYSTEMS INC.
 STREETSBORO, OHIO 44241

TITLE: N.C./N.C. PLUNGER SWITCH (DOUBLE POLE)

SIZE	B	DWG. NO.	6400-86
SCALE	FULL	PROJECT NO.	EX335
REV	~		