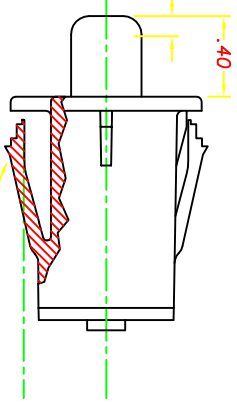


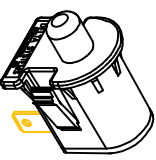
SUGGESTED MOUNTING HOLE
(SCALE: FULL)
VIEWED FROM SWITCH ENTRY SIDE

.040 - .150 MOTION
TO MAKE OR BREAK
CONTACTS.

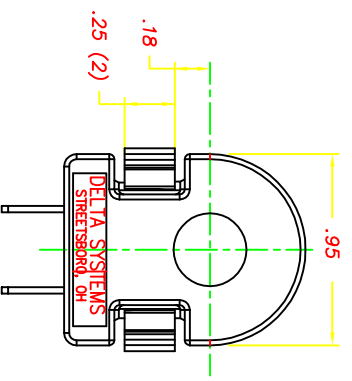


SNAP WINGS TO ACCOMMODATE PANEL
THICKNESSES OF .055, .115, AND .140,
INCLUDING PAINT AND DECALS.

REVISIONS			
~	INITIAL RELEASE, CR 963	04/30/97	TW
A	REVISED SNAP WING NOTE, CR1003	07/17/97	TW
B	REVISED BACK COVER, CR 1065A	04/10/98	JH
C	ADDED WING MOD, CR1427	11/09/02	MA
D	UPDATE MATERIAL CR1908	07/21/10	ERB

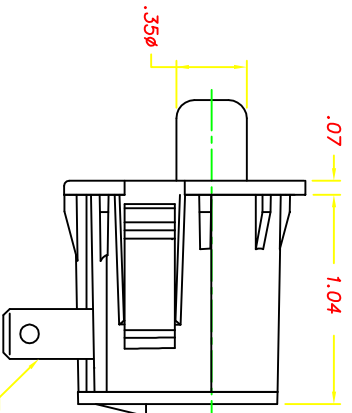


ISOMETRIC VIEW



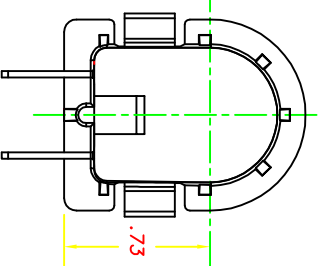
NOTES:

- 1-PLASTIC PARTS ARE POLYPROPYLENE. TERMINALS ARE NICKEL-PLATED BRASS.
- 2-DATE CODE INDICATING YEAR, MONTH, AND DAY OF MONTH MANUFACTURED STAMPED ON HOUSING.
- 3-INTEGRITY OF WELD & SWITCH FUNCTIONALITY TESTED AFTER ASSEMBLY.
- 4-THIS PRODUCT COVERED BY THE FOLLOWING U.S. PATENT: 4,812,604. OTHER PATENTS APPLIED FOR.



TERMINAL PATTERN &
LOCKING TAB TO MATE
WITH DSI CONNECTOR,
P/N 96526-0L

.25 x .032 MALE
BLADE TERMINALS (2)



DELTA SYSTEMS, INC. DOES NOT ASSUME
ANY LIABILITY ARISING OUT OF THE
MISAPPLICATION OF ANY PRODUCT

UNLESS OTHERWISE SPECIFIED
DIMENSIONS ARE IN INCHES
TOLERANCES ARE:
.004 .02 .004 .005 .004 .1

COMPUTER GENERATED
DRAWING - NO MANUAL
CHANGES ALLOWED

DO NOT SCALE DRAWING

DATE	BY	CHECKED	DATE
04/15/97	LMM	04/30/97	TW

MATERIAL: SEE NOTE 1

FINISH: OLIVE

DELTA
SYSTEMS INC.
STREETSBORO, OHIO 44241

TITLE: SNAP MOUNT SWITCH
NORMALLY OPEN

SIZE: B
SCALE: 2X

DRG. NO.: 6440-15
PROJECT NO.: EX311
REV: D