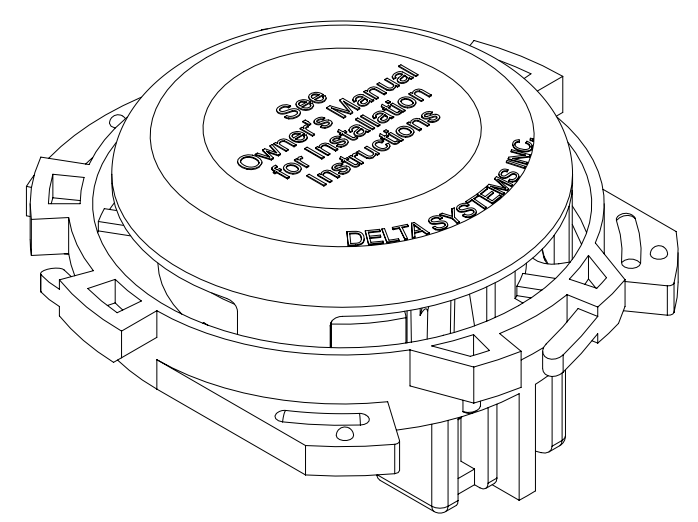
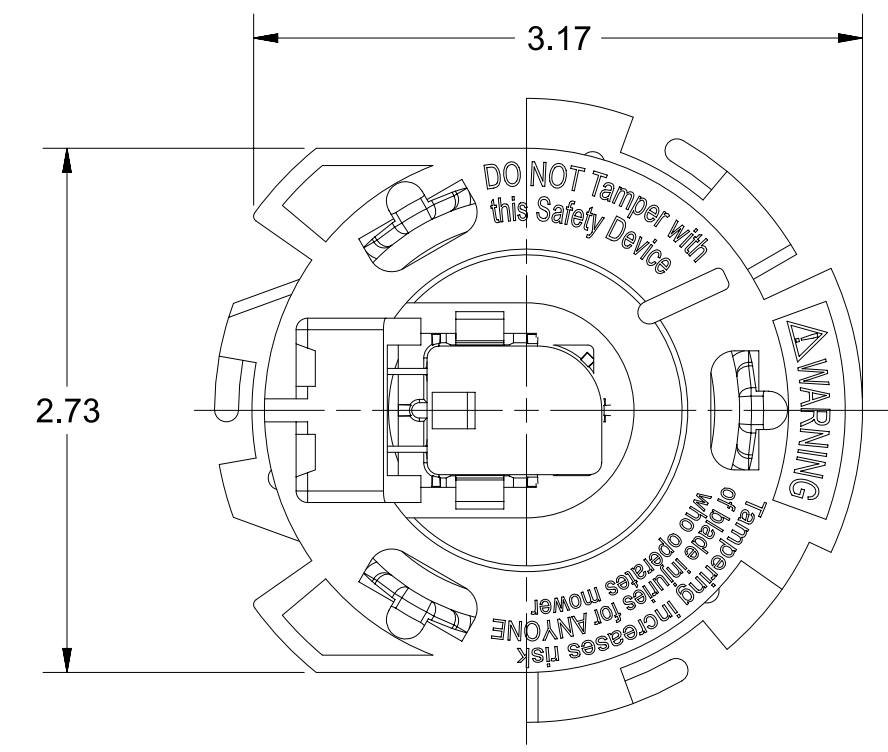
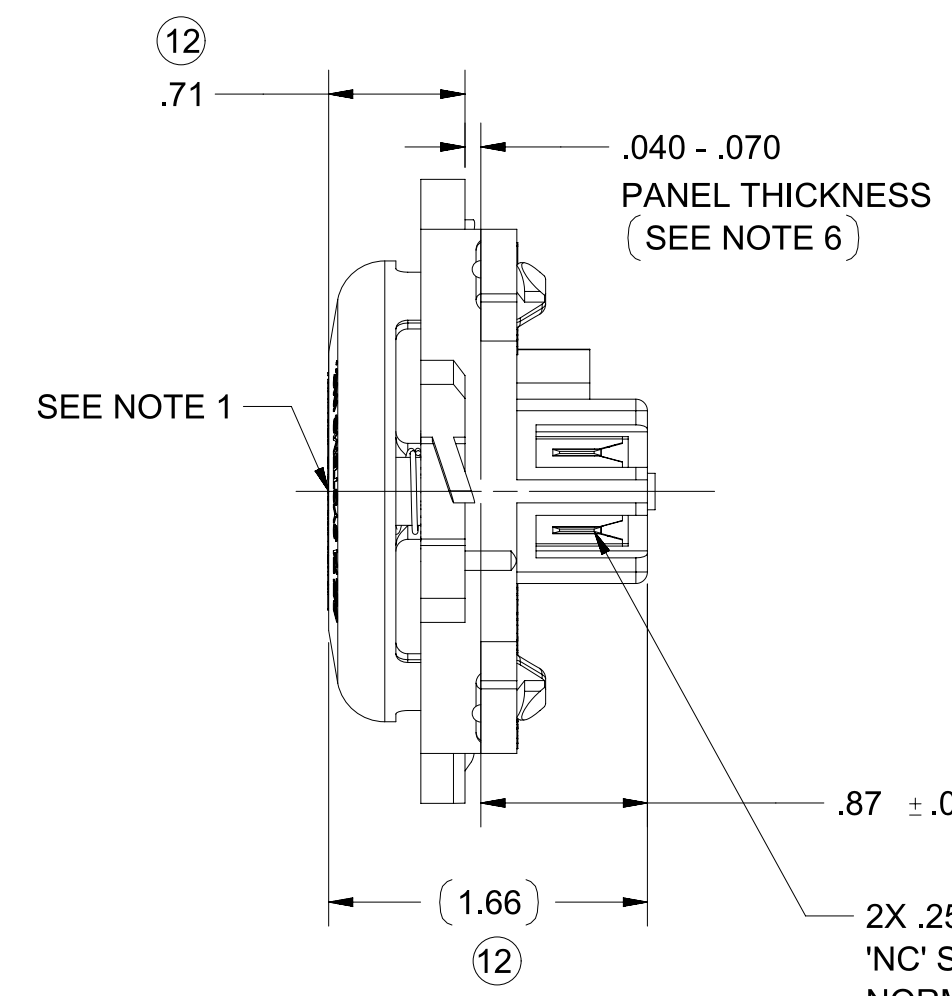
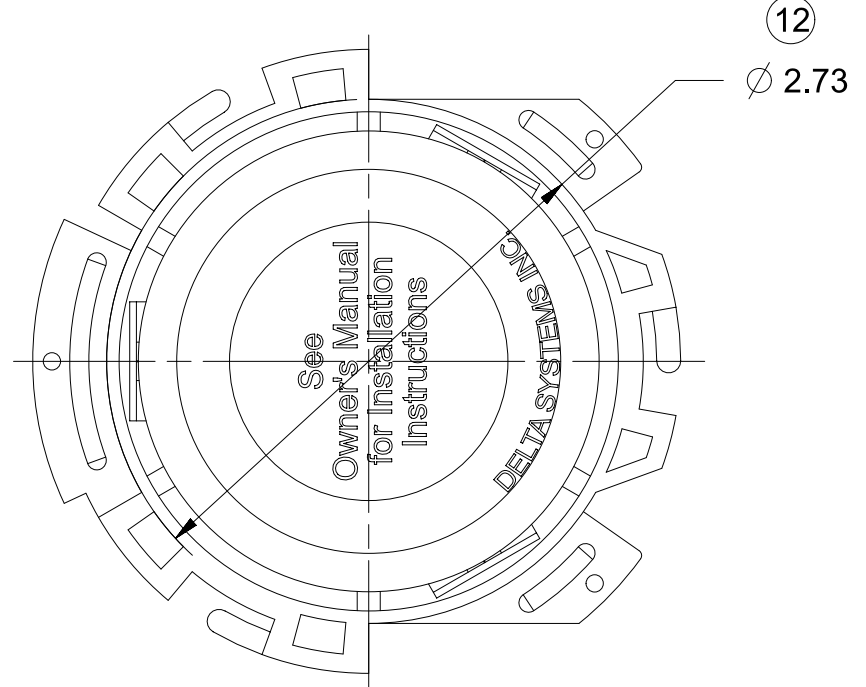
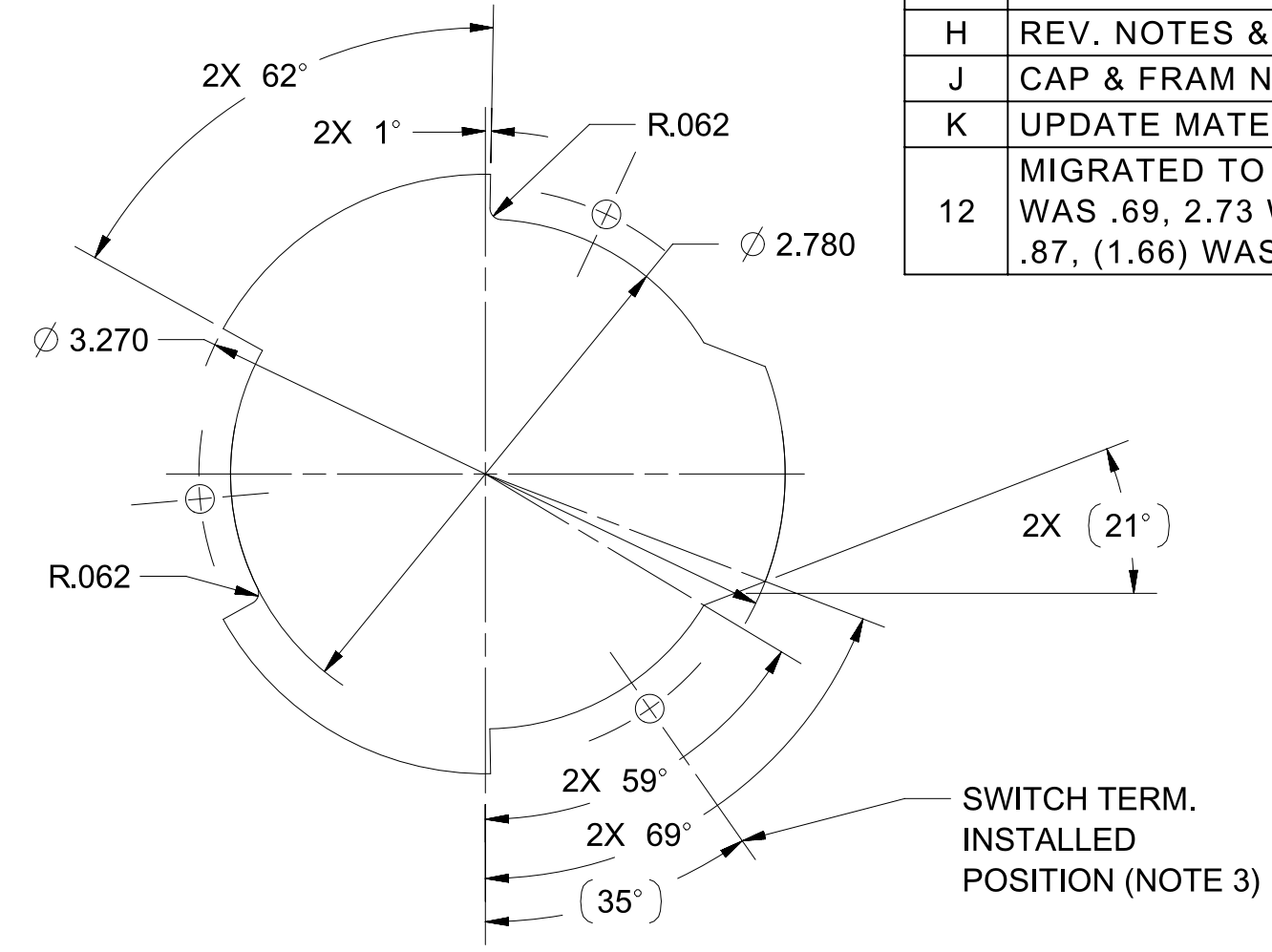
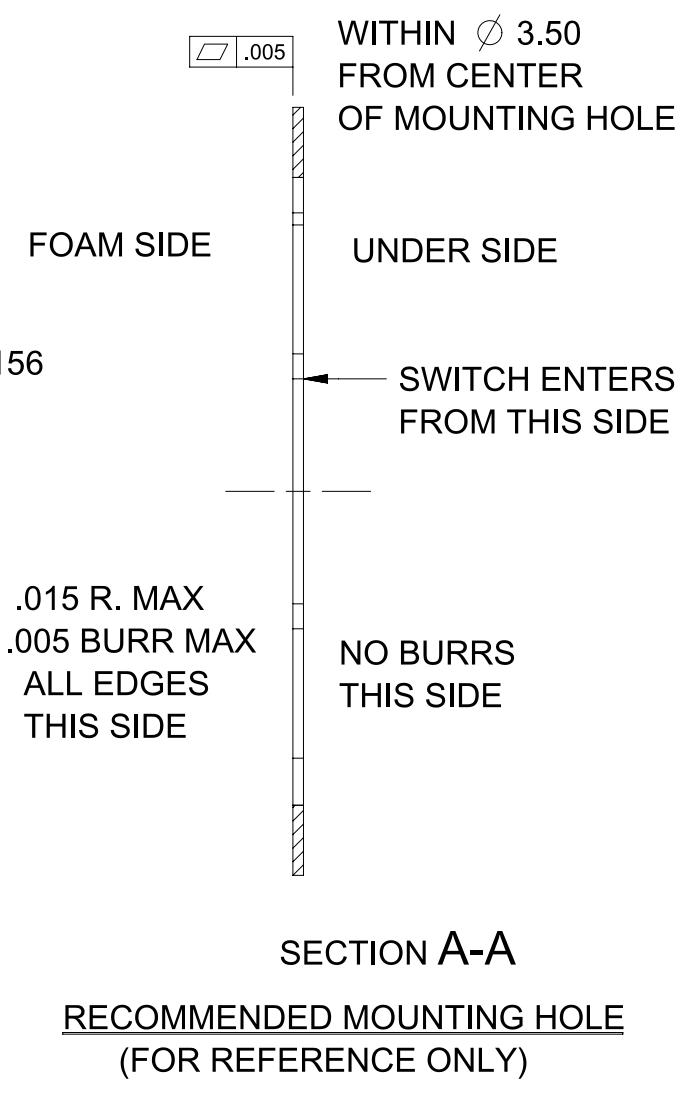
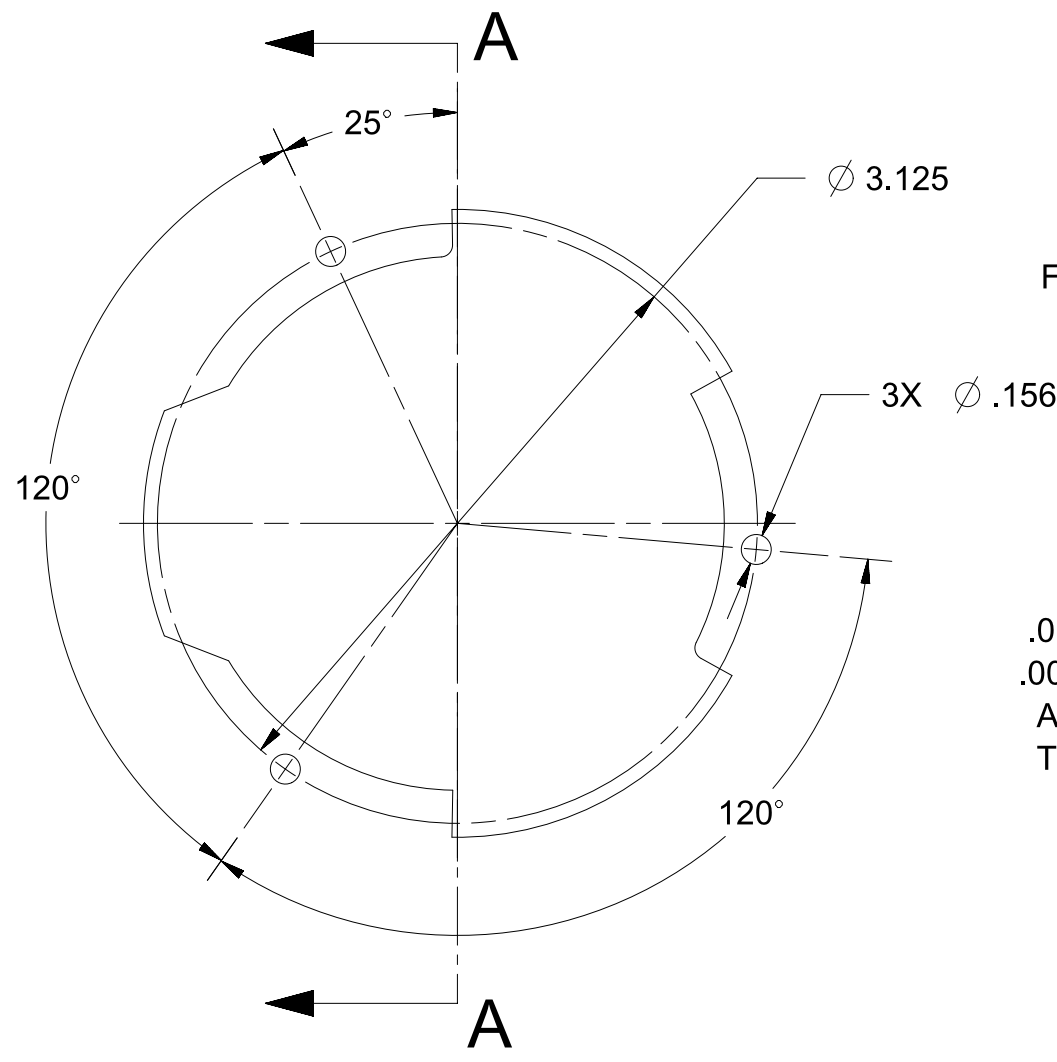


REVISIONS

REV.	DESCRIPTION	DATE	INIT
G	CAP & FRAME NOW BLACK, CR 826	07/31/96	TW
H	REV. NOTES & TITLE BLOCK, CR 992	07/17/97	TW
J	CAP & FRAM NOW GRAY, CR 1043	09/18/97	TW
K	UPDATE MATERIAL CR 1908	07/21/10	ERB
12	MIGRATED TO NX, ADDED ASME NOTE, .71 WAS .69, 2.73 WAS 2.74/2.72, .87 +/- .04 WAS .87, (1.66) WAS 1.64 (REF), ECO 744	05/02/17	PJC



- NOTES
- 1) .040-.150 MOTION TO MAKE OR BREAK CONTACTS.
  - 2) PLASTIC PARTS - POLYPROPYLENE  
TERMINALS - NICKEL PLATED BRASS.
  - 3) SWITCH REQUIRES 55° CLOCKWISE ROATION TO LOCK IN PLACE (VIEWED FROM UNDERSIDE OF SEAT PAN).
  - 4) 5±1.5 LBS ACTUATION FORCE AT .25 DEPRESSION OF ACTUATOR CUP.
  - 5) PROPERLY INSTALLED SWITCH FRAME WILL SUPORT A STATIC LOAD OF 350 LBS. AT 60°F.
  - 6) THICKNESS INCLUDES PAINT AND/OR ANY OTHER LAYERS APPLIED BETWEEN SWITCH AND PANEL.
  - 7) DATE CODE INDICATING YEAR, MONTH,AND DAY OF MONTH MANUFACTURED STAMPED ON HOUSING.
  - 8) INTERGRITY OF WELD AND SWITCH FUNCTIONALITY TESTED AFTER ASSEMBLY.
  - 9) DELTA IS RESPONSIBLE FOR COMPLIANCE TO THIS SPECIFICATION. THE FUNCTION AND ADEQUACY OF THE SAFETY "SYSTEM" FOR WHICH THIS COMPONENT IS USED IS THE RESPONSIBILITY OF THOSE THAT DESIGN AND BUILD THE SYSTEM (INCULDING BUT NOT LIMITED TO THE SEAT DESIGN, SWITCH LOCATION, FOAM DENSITY AND DESIGN).
  - 10) THIS PRODUCT COVERED BY THE FOLLOWING U.S. PATENT; 5,424,502.
  - 11) INTERPRET THIS DRAWING ACCORDING WITH ASME Y14.5-2009.

PROPRIETARY & CONFIDENTIAL THE INFORMATION CONTAINED IN THIS DRAWING IS THE SOLE PROPERTY OF DELTA SYSTEMS. ANY REPRODUCTION IN PART OR AS A WHOLE WITHOUT THE WRITTEN PERMISSION OF DELTA SYSTEMS IS PROHIBITED.	UNLESS OTHERWISE SPECIFIED DIMENSIONS ARE IN INCHES TOLERANCES ARE: .X ± .1 .XX ± .02 .XXX ± .005 X° ± 1	DRAWN ajc DATE 27-Apr-1993	<b>DELTA SYSTEMS</b> 1734 FROST ROAD STREETSBORO, OHIO 44241 330-626-2811 WWW.DELTASYSTEMSINC.COM
		CHECKED twilliams DATE 28-Apr-1993	
		APPROVED ikirbaw DATE 25-May-2017	
		MATERIAL SEE NOTE 2 FINISH GRAY	
DELTA SYSTEMS INC. DOES NOT ASSUME ANY LIABILITY ARISING OUT OF THE MISAPPLICATION OF ANY PRODUCT	COMPUTER GENERATED DRAWING - NO MANUAL CHANGES ALLOWED	PROJECTED VIEWS ARE 3RD ANGLE STATUS DS4_Concept	TITLE NC Quick Mount Seat Switch Assembly SIZE C DWG. NO. 6500-51_APP SCALE NTS SHEET 1 OF 1 PROJECT NO. EX311 REVISION 12