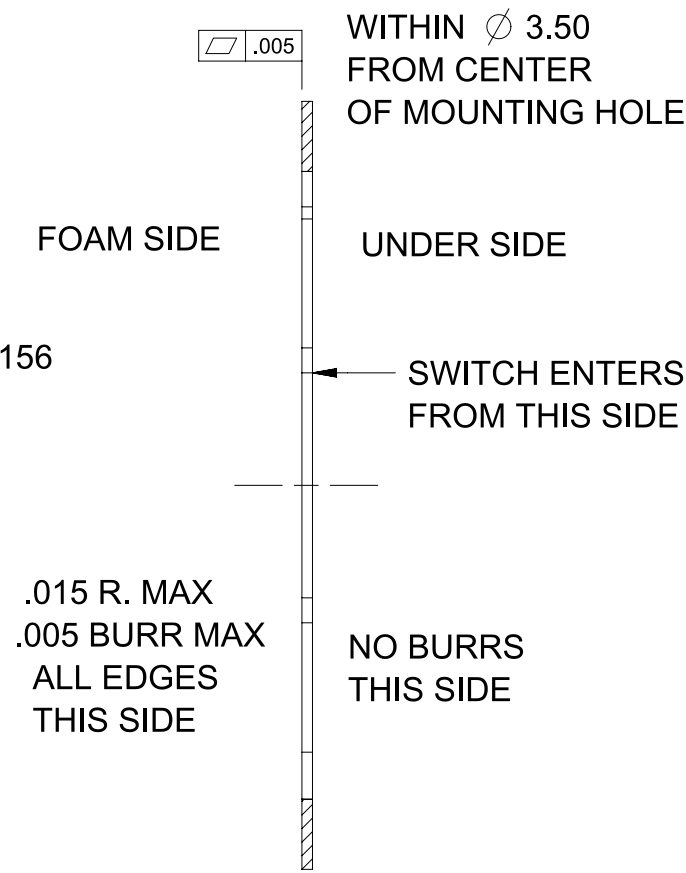
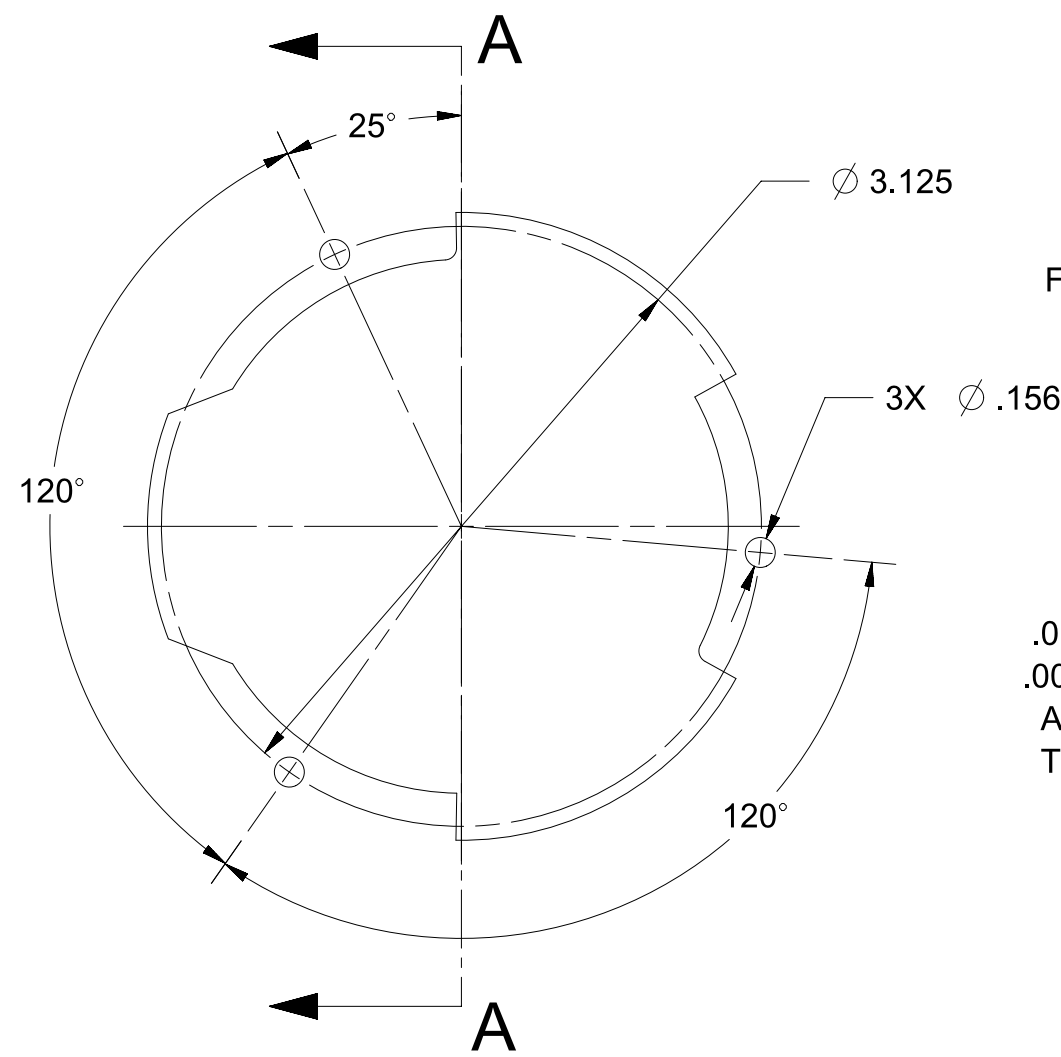


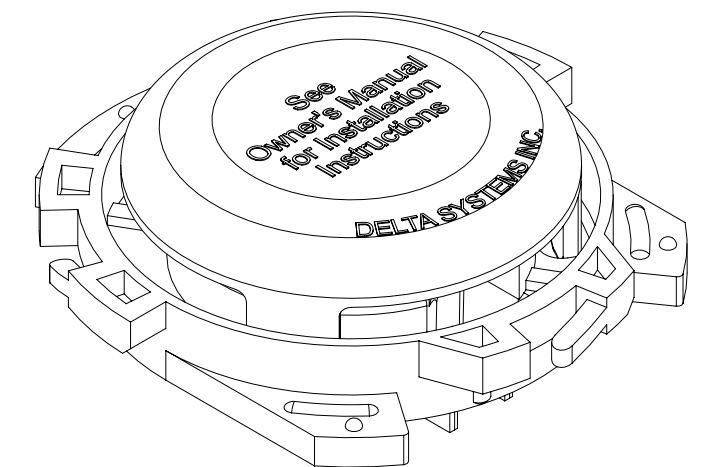
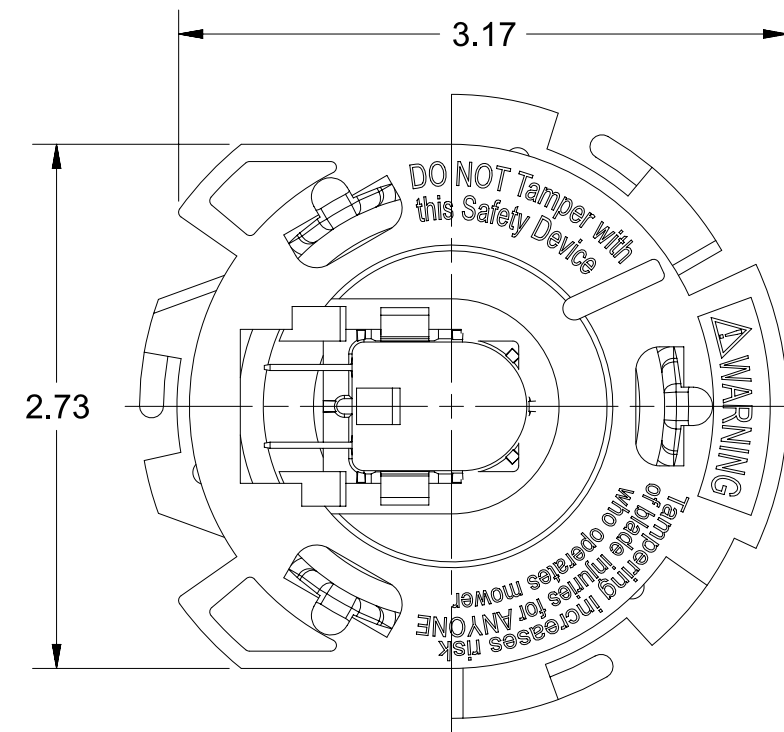
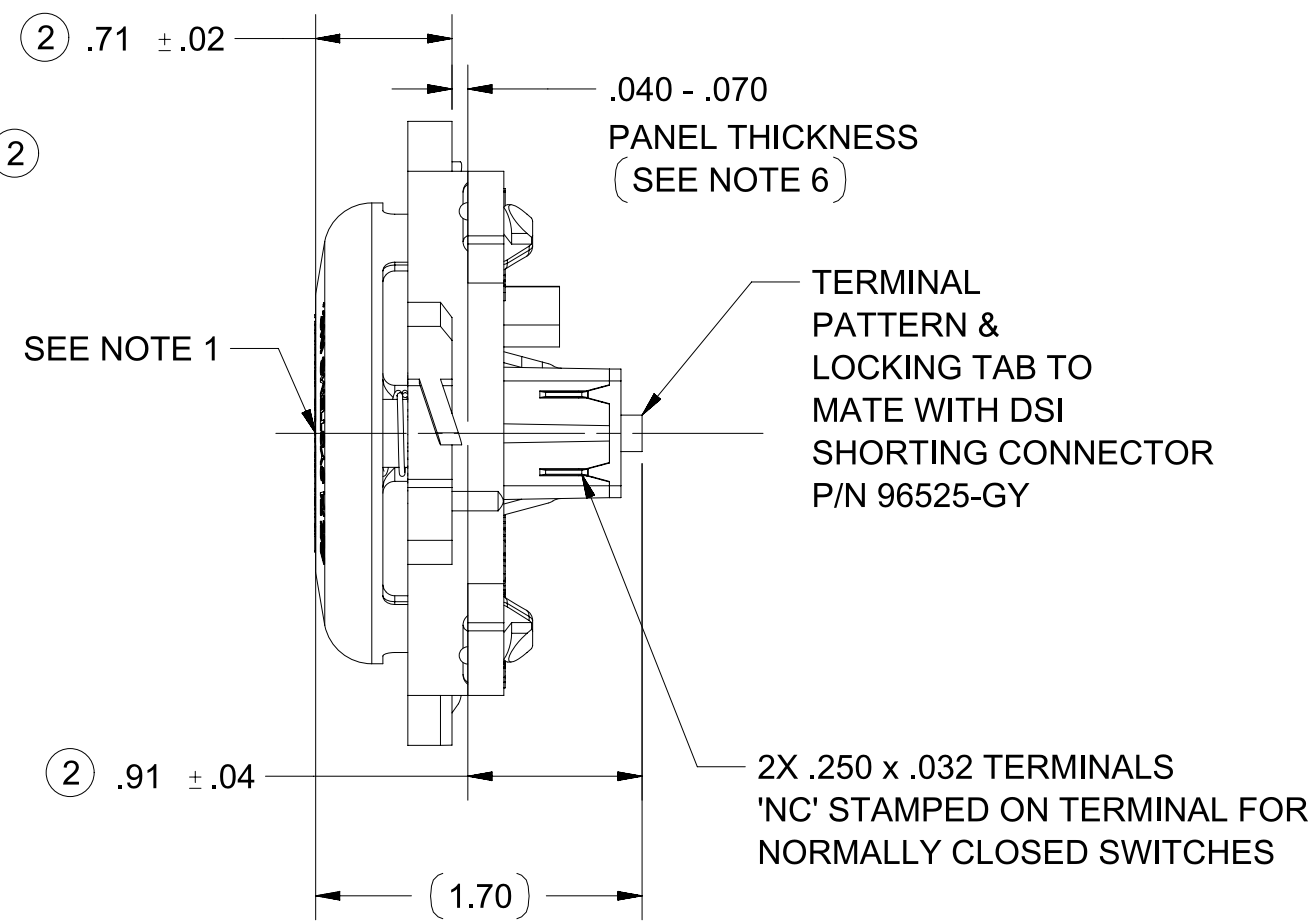
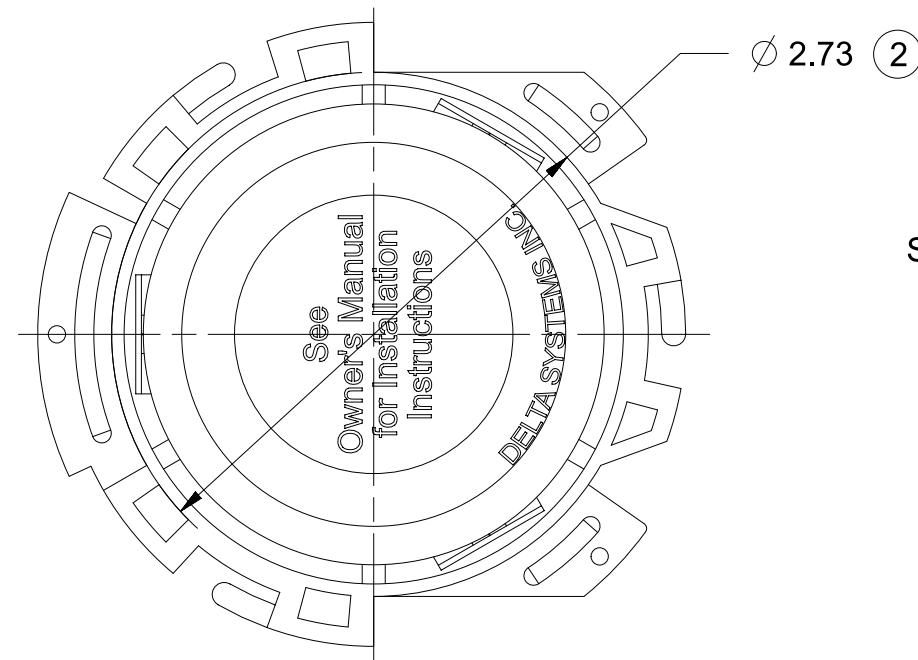
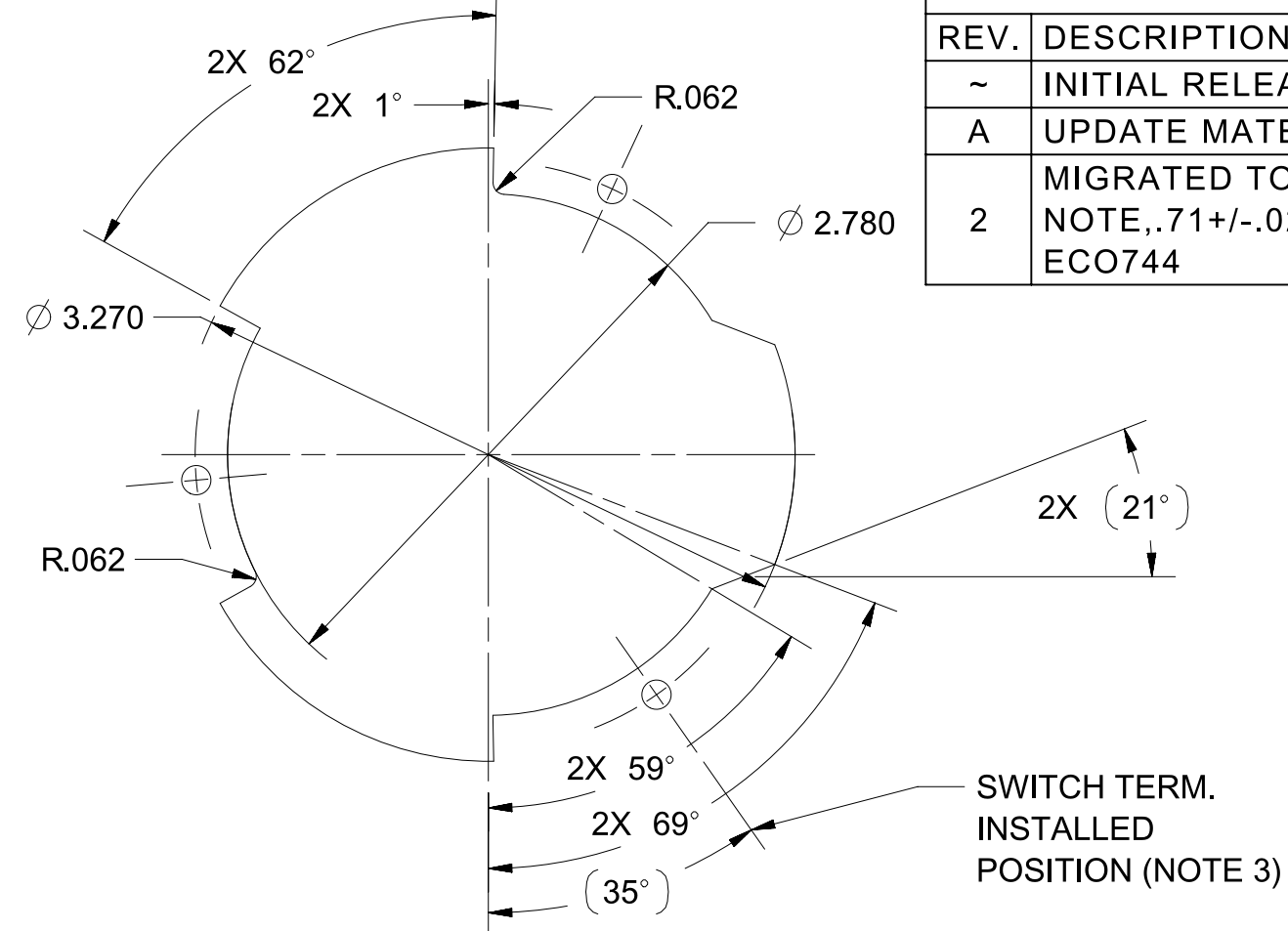
REVISIONS

REV.	DESCRIPTION	DATE	INIT
~	INITIAL RELEASE, CR 1653	08/21/06	MA
A	UPDATE MATERIAL CR1908	07/21/10	ERB
2	MIGRATED TO NX, ADDED ASME NOTE, .71+/- .02 WAS .69, .91+/- .04 WAS .91 ECO744	05/22/17	PJC



SECTION A-A

RECOMENDED MOUNTING HOLE  
(FOR REFERENCE ONLY)



NOTES

- 1) .040-.150 MOTION TO MAKE OR BREAK CONTACTS.
- 2) PLASTIC PARTS - POLYPROPYLENE  
TERMINALS - NICKEL PLATED BRASS.  
SWITCH COLOR IS OLIVE, CAP AND FRAME COLOR IS GRAY.
- 3) SWITCH REQUIRES 55° CLOCKWISE ROTATION TO LOCK IN PLACE (VIEWED FROM UNDERSIDE OF SEAT PAN).
- 4) 5±1.5 LBS ACTUATION FORCE AT .25 DEPRESSION OF ACTUATOR CUP.
- 5) PROPERLY INSTALLED SWITCH FRAME WILL SUPPORT A STATIC LOAD OF 350 LBS. AT 60°F.
- 6) THICKNESS INCLUDES PAINT AND/OR ANY OTHER LAYERS APPLIED BETWEEN SWITCH AND PANEL.
- 7) DATE CODE INDICATING YEAR, MONTH, AND DAY OF MONTH MANUFACTURED STAMPED ON HOUSING.
- 8) INTERGRITY OF WELD AND SWITCH FUNCTIONALITY TESTED AFTER ASSEMBLY.
- 9) DELTA IS RESPONSIBLE FOR COMPLIANCE TO THIS SPECIFICATION. THE FUNCTION AND ADEQUACY OF THE SAFETY "SYSTEM" FOR WHICH THIS COMPONENT IS USED IS THE RESPONSIBILITY OF THOSE THAT DESIGN AND BUILD THE SYSTEM (INCLUDING BUT NOT LIMITED TO THE SEAT DESIGN, SWITCH LOCATION, FOAM DENSITY AND DESIGN).
- 10) THIS PRODUCT IS COVERED BY THE FOLLOWING U.S. PATENT; 5,424,502.
- 11) INTERPRET THIS DRAWING ACCORDING WITH ASME Y14.5-2009.

PROPRIETARY & CONFIDENTIAL THE INFORMATION CONTAINED IN THIS DRAWING IS THE SOLE PROPERTY OF DELTA SYSTEMS. ANY REPRODUCTION IN PART OR AS A WHOLE WITHOUT THE WRITTEN PERMISSION OF DELTA SYSTEMS IS PROHIBITED.	UNLESS OTHERWISE SPECIFIED DIMENSIONS ARE IN INCHES TOLERANCES ARE: .X ± .1 .XX ± .02 .XXX ± .005 X° ± 1	DRAWN: malbrecht CHECKED: jmichaud APPROVED: ikirbaw MATERIAL: SEE NOTE 2 FINISH: SEE NOTE 2 DO NOT SCALE DRAWING	DATE: 28-Jun-2006 DATE: 11-Jul-2006 DATE: 25-May-2017 PROJECTED VIEWS ARE 3RD ANGLE STATUS: DS4_Design	<b>DELTA SYSTEMS</b> 1734 FROST ROAD STREETSBORO, OHIO 44241 330-626-2811 WWW.DELTASYSTEMSINC.COM TITLE: NO Quick Mount Seat Switch Assembly DWG. NO.: 6500-57_APP SHEET: 1 OF 1 PROJECT NO.: EX311 REVISION: 2
	DELTA SYSTEMS INC. DOES NOT ASSUME ANY LIABILITY ARISING OUT OF THE MISAPPLICATION OF ANY PRODUCT	COMPUTER GENERATED DRAWING - NO MANUAL CHANGES ALLOWED	SCALE: NTS	
	DRAWING NO. 6500-57_APP			
	SHEET 1 OF 1			