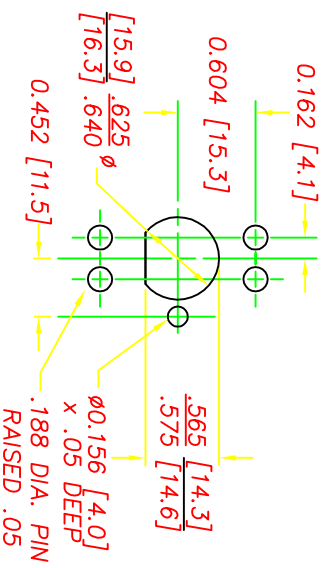
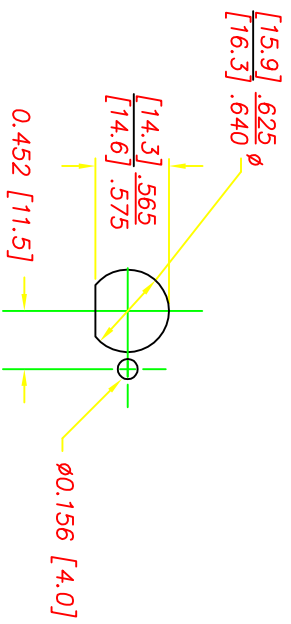


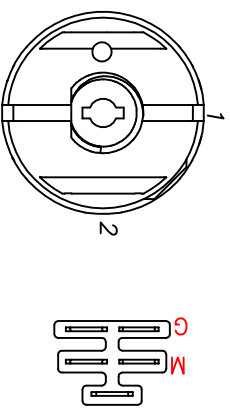
USE 2 REACTION PINS, TOP OR BOTTOM



RECOMMENDED PLASTIC PANEL
MOUNTING HOLE
(VIEW FROM BACK OF PANEL)



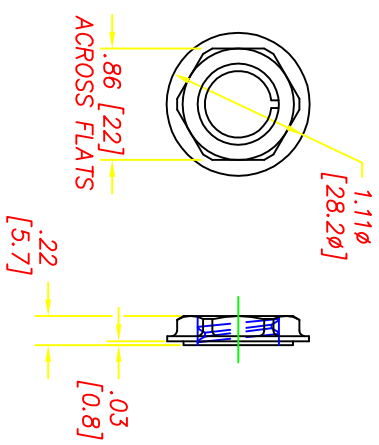
RECOMMENDED METAL PANEL
MOUNTING HOLE
(VIEW FROM BACK OF PANEL)



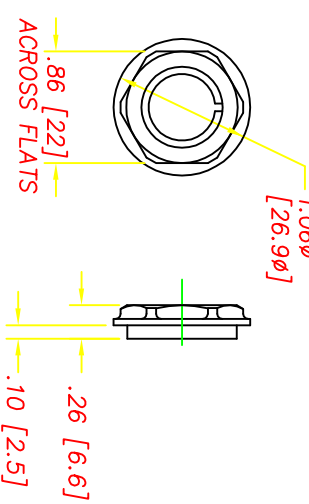
| POSITION | ROTATION | FUNCTION | CONTACT |
|----------|----------|----------|---------|
| 1 | 0° | OFF | OPEN |
| 2 | 90° | ON | M+G |

NOTES

- 1-DIM.'S IN BRACKET [] ARE IN MILLIMETERS; MILLIMETER TOLERANCES ARE .XX ± .5, .XXX ± .15.
- 2-PLASTIC PARTS ARE POLYPROPYLENE (BLACK). TERMINALS ARE BRONZE.
- 3-7/8 HEX NUT IS SHIPPED SEPARATELY.
- 4-RECOMMENDED ASSEMBLY TORQUE IS 26 IN-LBS TO 36 IN-LBS. AUTOMATIC SHUTOFF TORQUE SCREWDRIVER MAXIMUM SPEED IS 300 RPM.
- 5-KEY IS SHIPPED SEPARATELY. MAXIMUM TORQUE FOR KEY IS 20 IN LBS. USE DELTA KEY ONLY. DELTA STEEL KEY PART# 6885-STD.
- 6-SWITCH STYLE STAMPED ON HOUSING.
- 7-DATE CODE INDICATING YEAR, MONTH, AND DAY OF MONTH MANUFACTURED STAMPED ON HOUSING.
- 8-SWITCH ELECTRICAL FUNCTIONALITY TESTED AFTER ASSEMBLY.
- 9-ELECTRICAL RATING, CONTINUOUS: 20A @ 12-14 VDC.
ELECTRICAL LIFE: 5K CYCLES @ 10 AMPS INDUCTIVE.
10K CYCLES @ 5 AMPS RESISTIVE.
50K CYCLES @ 5 AMPS RESISTIVE.
- 10-THIS PRODUCT COVERED BY THE FOLLOWING U.S. PATENT: 5,252,791.
- 11-PULL FORCE TO DISLOCATE BACK COVER IS 80 LBS. MINIMUM.

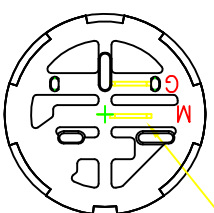
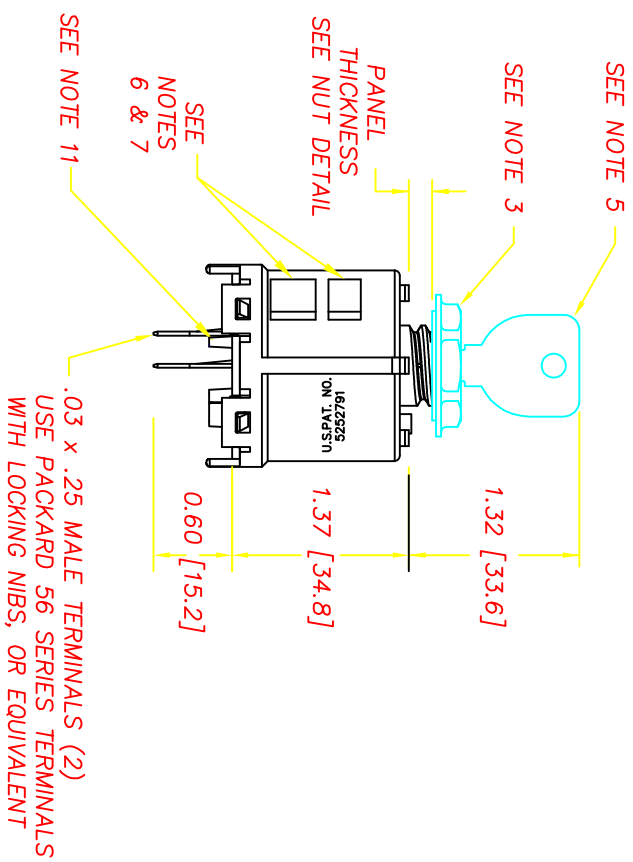
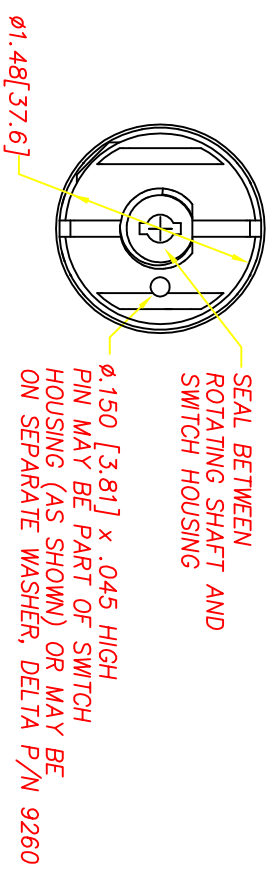


NUT DETAILS
(DSI P/N 9256)
PANEL THICKNESS RANGE .07 TO .19



NUT DETAILS
(DSI# 9252)
MATES WITH ACCURATE MOLD & DIE CO. BEZEL# 121
PANEL THICKNESS RANGE .05 TO .17

| REVISIONS | | | |
|-----------|--------------------------------------|----------|-----|
| B | REVISED BACK COVER, CR 1046 | 9/17/98 | JH |
| C | ADDED CONNECTOR STOP, CR1215 | 12/11/98 | JH |
| D | REM'D CORE IN BACKCOVER, CR 1306 | 06/04/99 | JH |
| E | UPDATED NOTE, MATERIAL IS BRONZE | 7/13/99 | ML |
| F | ADDED TAPER PER CR1334 | 9/9/99 | JH |
| G | DEFINED CRITICAL CHARACTERISTICS | 05/08/00 | JH |
| H | DIM .62 [15.7] TO .60 [15.2]. CN0554 | 09/09/02 | JG |
| J | REMOVE CRITICAL DIM., CR 1477 | 06/02/03 | JH |
| K | UPDATE MATERIAL CR1938 | 01/03/11 | ERB |



TERMINAL PATTERN TO MATE WITH PACKARD 2-WAY CONNECTOR P/N 2973872, OR EQUIVALENT

| | | | |
|--|------------------------------------|---|----------------------------|
| DELTA SYSTEMS, INC. DOES NOT ASSUME ANY LIABILITY ARISING OUT OF THE MISAPPLICATION OF ANY PRODUCT | | UNLESS OTHERWISE SPECIFIED DIMENSIONS ARE IN INCHES TOLERANCES ARE .02 ANG ± .1° DO NOT SCALE DRAWING | |
| DRAWN DATE DMR 06/25/97 | CHECKED DATE TW 07/10/97 | MATERIAL SEE NOTE 2 | FINISH SEE NOTE 2 |
| TITLE IGNITION SWITCH 2 - POSITION | | SIZE C | DWG. NO. 6850-22 |
| SYSTEMS INC. STRETSBORO, OHIO 44241 | | PROJECT NO. EX311 | REV K |