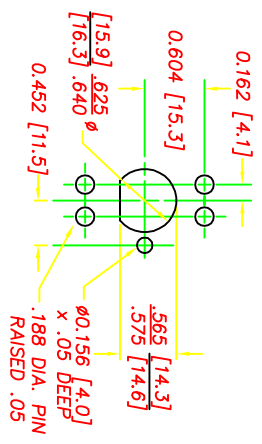
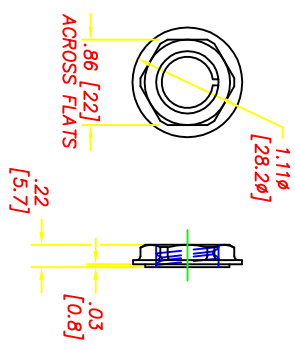


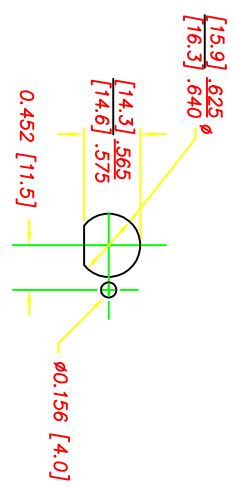
USE 2 REACTION PINS, TOP OR BOTTOM



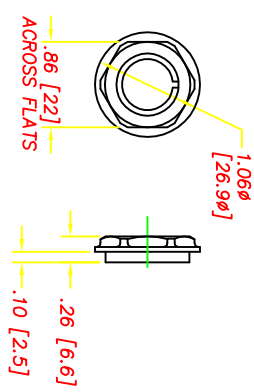
RECOMMENDED PLASTIC PANEL
MOUNTING HOLE
(VIEW FROM BACK OF PANEL)



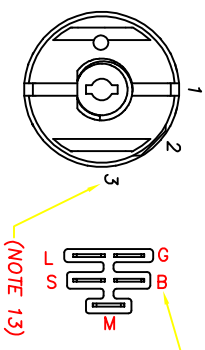
NUT DETAILS
(DSI P/N 9256)
PANEL THICKNESS RANGE: .07 TO .19



RECOMMENDED METAL PANEL
MOUNTING HOLE
(VIEW FROM BACK OF PANEL)



NUT DETAILS
(DSI# 9252)
MATES WITH ACCURATE MOLD & DIE CO. BEZEL# 121
PANEL THICKNESS RANGE: .05 TO .17

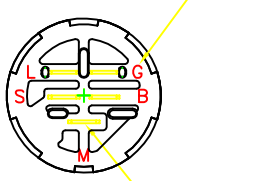
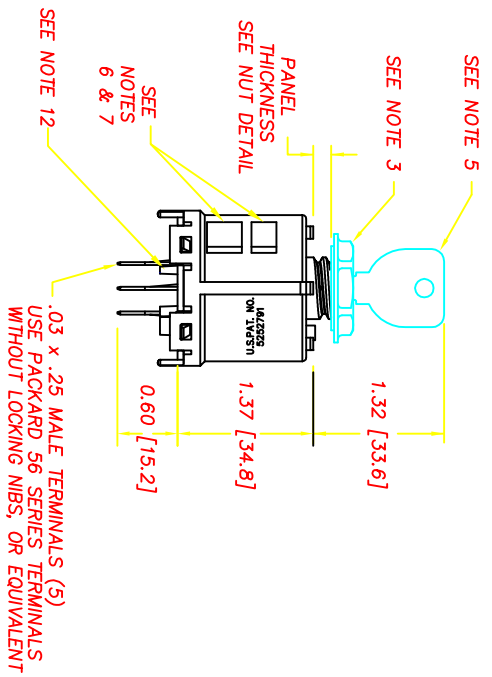
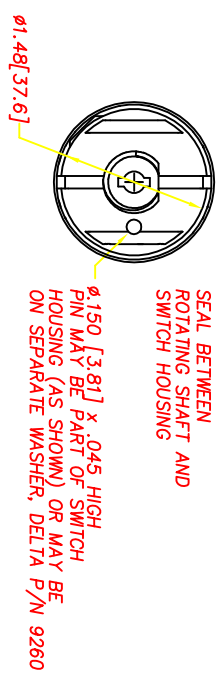


POSITION	ROTATION	FUNCTION	CONTACT
1	0°	OFF	G+M
2	45°	RUN	L+B
3	85°	START	S+B

NOTES

- 1-DIM. 'S' IN BRACKET [] ARE IN MILLIMETERS; MILLIMETER TOLERANCES ARE .XX ± .15.
- 2-PLATING PARTS ARE POLYPROPYLENE (BLACK). TERMINALS ARE BRONZE.
- 3-7/8 HEX NUT IS SHIPPED SEPARATELY.
- 4-RECOMMENDED ASSEMBLY TORQUE IS 26 IN-LBS TO 36 IN-LBS. AUTOMATIC SHUTOFF TORQUE SCREWDRIVER MAXIMUM SPEED IS 300 RPM.
- 5-KEY IS SHIPPED SEPARATELY. MAXIMUM TORQUE FOR KEY IS 20 IN LBS.
- 6-USE DELTA KEY ONLY. DELTA STEEL KEY PART# 6885-STD.
- 7-DATE CODE INDICATING YEAR, MONTH, AND DAY OF MONTH MANUFACTURED STAMPED ON HOUSING.
- 8-SWITCH ELECTRICAL FUNCTIONALITY TESTED AFTER ASSEMBLY.
- 9-ELECTRICAL RATING, CONTINUOUS: 20A @ 12-14 VDC.
- 10-ELECTRICAL LIFE: 5K CYCLES @ 10 AMPS INDUCTIVE; 10K CYCLES @ 5 AMPS INDUCTIVE; 50K CYCLES @ 5 AMPS RESISTIVE.
- 11-OTHER PATENTS COVERED BY THE FOLLOWING U.S. PATENT: 5,252,791.
- 12-DIRECTLY ABOVE THE "G" TERMINAL, RELATIVE TO GRAVITY.
- 13-PULL FORCE TO DISLOCATE BACK COVER IS 80 LBS. MINIMUM.
- 14-ALL OTHER CONTACT COMBINATIONS ARE NOT ALLOWED.

REVISIONS	
B	REVISED BACK COVER, CR 1046 9/17/97 JH
C	ADDED CONNECTOR STOP, CR1215 12/11/98 JH
D	REVID CORE IN BACKCOVER, CR 1306 06/04/99 JH
E	UPDATED NOTE, MATERIAL IS BRONZE 7/13/99 ML
F	ADDED TAPER PER CR1334 9/9/99 JH
G	DEFINED CRITICAL CHARACTERISTICS 05/08/00 JH
H	DIM. .62 [15.7] TO .60 [15.2], CN0554 09/09/02 JG
J	REMOVE CRITICAL DIM., CR 1477 06/02/03 JH
K	UPDATE MATERIAL CR1938 01/03/11 ERB



DELTA SYSTEMS, INC. DOES NOT ASSUME ANY LIABILITY ARISING OUT OF THE MISAPPLICATION OF ANY PRODUCT

COMPUTER GENERATED DRAWING - NO MANUAL CHANGES ALLOWED	UNLESS OTHERWISE SPECIFIED DIMENSIONS ARE IN INCHES	DATE	DRAWN
304 .02 3044 .005 ANG 1'		05/20/97	LMM
DO NOT SCALE DRAWING		05/23/97	TW

FINISH: SEE NOTE 2
MATERIAL: SEE NOTE 2

DELTA SYSTEMS INC.
STREETSBORO, OHIO 44241

IGNITION SWITCH
3 - POSITION

SIZE: FULL
DIM. NO: 6850-31
PROJECT NO: EX311
REV: K