

8

7

6

5

4

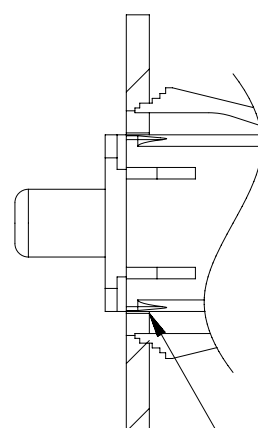
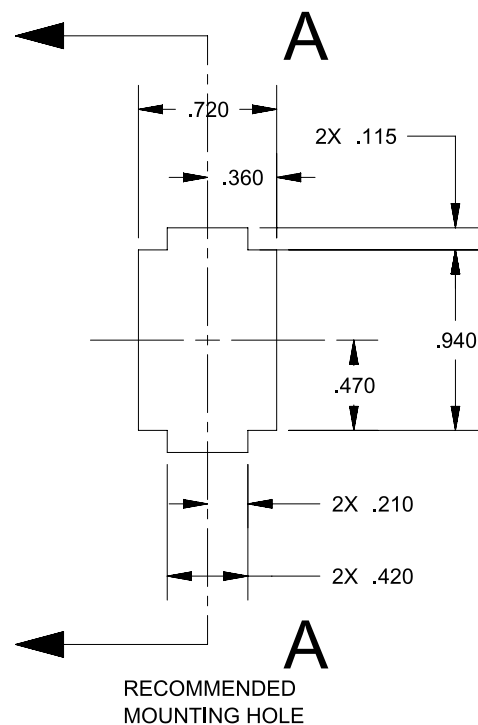
3

2

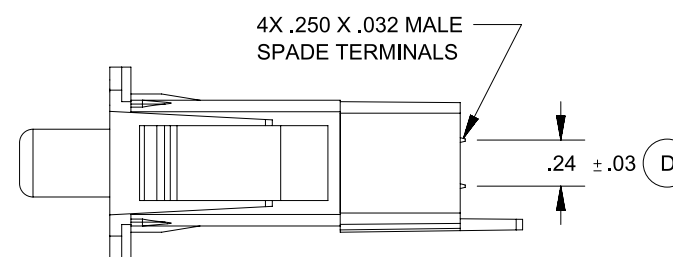
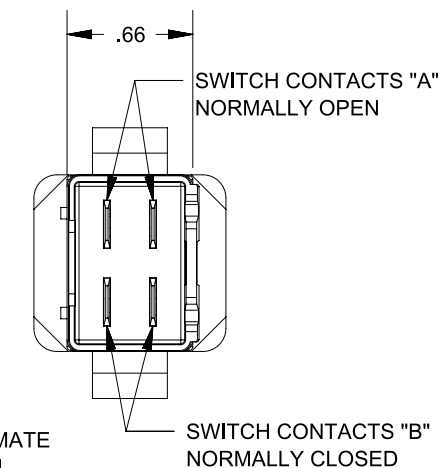
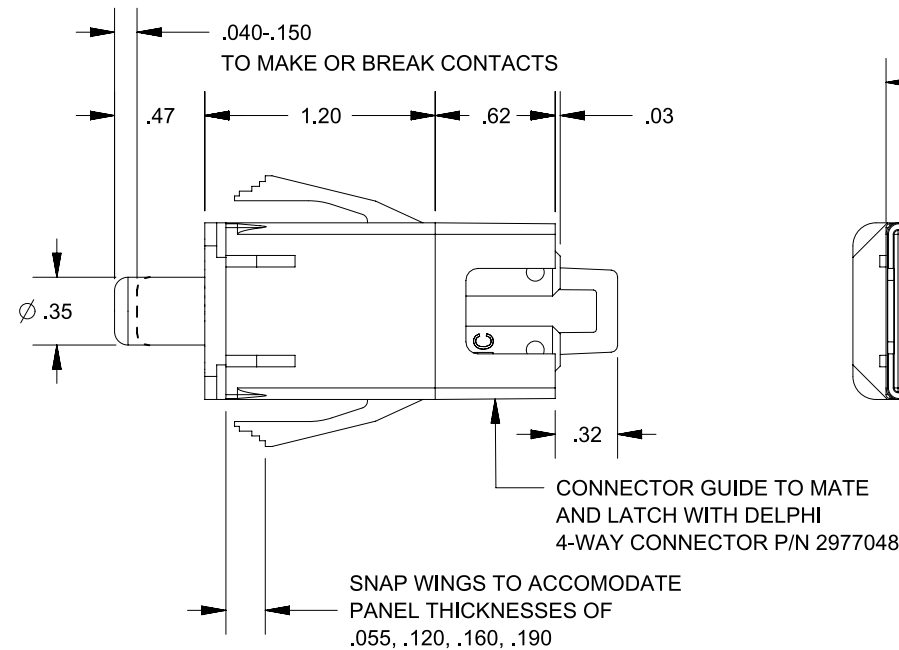
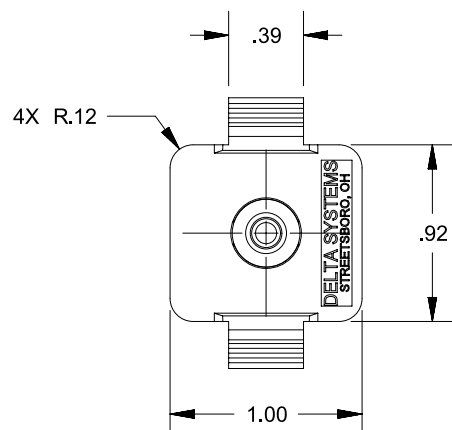
1

REVISIONS

REV.	DESCRIPTION	DATE	INIT
A	ADDED .33, .036 DIMS., CR1483	08/17/04	MA
B	.03 WAS .036, CN 1443	07/30/07	MA
C	REM. IDENTIFIER FROM TABLE, CR1719	04/30/07	MA
D	UPDATE MATERIAL & TOL. CR1908	07/21/10	ERB
5	REDREW IN NX, ADDED ASME NOTE, SEPARATED -01B & -51B, ECO 313	11/04/15	IDK



SECTION A-A



NOTES

- 1) NC STAMPED ON ALL NORMALLY CLOSED TERMINALS
- 2) PLASTIC PARTS-POLYPROPYLENE
TERMINALS - NICKEL-PLATED BRASS
- 3) DATE CODE INDICATING YEAR, MONTH, AND DAY OF MONTH MANUFACTURED MARKED ON HOUSING
- 4) INTEGRITY OF WELD AND SWITCH FUNCTIONALITY TESTED AFTER ASSEMBLY.
- 5) NC POLE BREAKS CONTACT BEFORE THE NO POLE MAKES CONTACT.
- 6) INTERPRET THIS DRAWING IN ACCORDANCE WITH ASME Y14.5-2009

PROPRIETARY & CONFIDENTIAL THE INFORMATION CONTAINED IN THIS DRAWING IS THE SOLE PROPERTY OF DELTA SYSTEMS. ANY REPRODUCTION IN PART OR AS A WHOLE WITHOUT THE WRITTEN PERMISSION OF DELTA SYSTEMS IS PROHIBITED.	UNLESS OTHERWISE SPECIFIED DIMENSIONS ARE IN INCHES TOLERANCES ARE: .X± .1 .XX± .02 .XXX± .005 X°± 1°	DRAWN malbrecht	DATE 19-Oct-2000	1734 FROST ROAD STREETSBORO, OHIO 44241 330-626-2811 WWW.DELTASYSTEMSINC.COM			
		CHECKED jharvey	DATE 11-Oct-2001				
		APPROVED ikirbawy	DATE 04-Nov-2015				
		MATERIAL SEE NOTE 2	PROJECTED VIEWS ARE 3RD ANGLE				
DELTA SYSTEMS INC. DOES NOT ASSUME ANY LIABILITY ARISING OUT OF THE MISAPPLICATION OF ANY PRODUCT	COMPUTER GENERATED DRAWING - NO MANUAL CHANGES ALLOWED	FINISH GRAY		TITLE Switch, Plunger, Snap Mount, NO-NC			
		DO NOT SCALE DRAWING	STATUS DS4_Design	SIZE B	DWG. NO. 6700-01B_APP		
				SCALE NTS	SHEET 1 OF 1	PROJECT NO. EX311	REVISION 5

8

7

6

5

4

3

2

1