

8

7

6

5

4

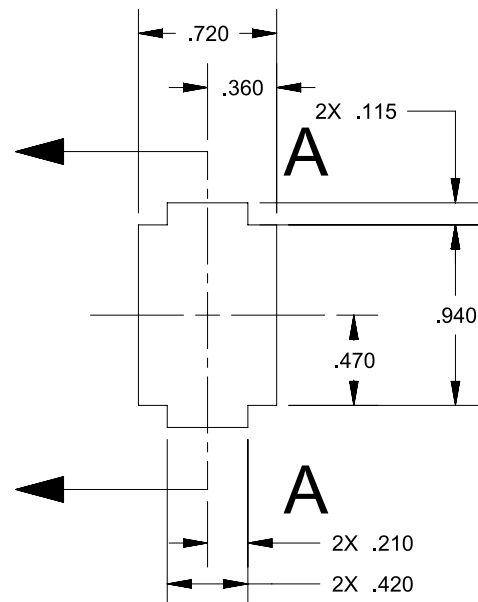
3

2

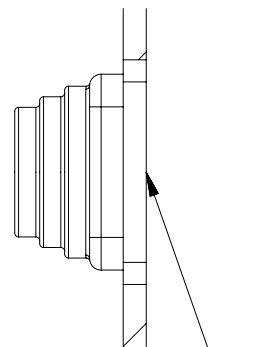
1

REVISIONS

REV.	DESCRIPTION	DATE	INIT
A	.03 WAS .036, CN 1443	07/30/07	MA
B	UPDATE DIMENSION PER CAP., CN2225	01/04/10	MEL
C	UPDATE MATERIAL & TOL, CR1908	07/21/10	ERB
4	REDREW IN NX, ADDED NOTES 8 & 9, ECO 207	09/19/14	IDK
5	REMOVED NOTE REGARDING THERMAL BONDING, ECO313	10/21/15	BMS

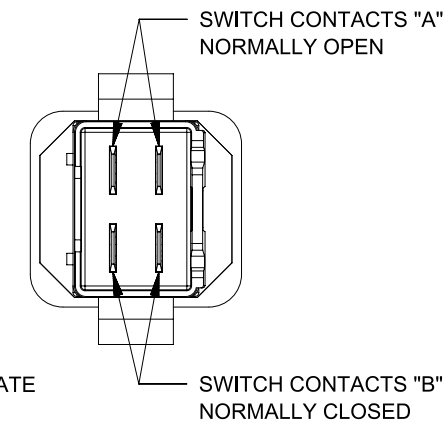
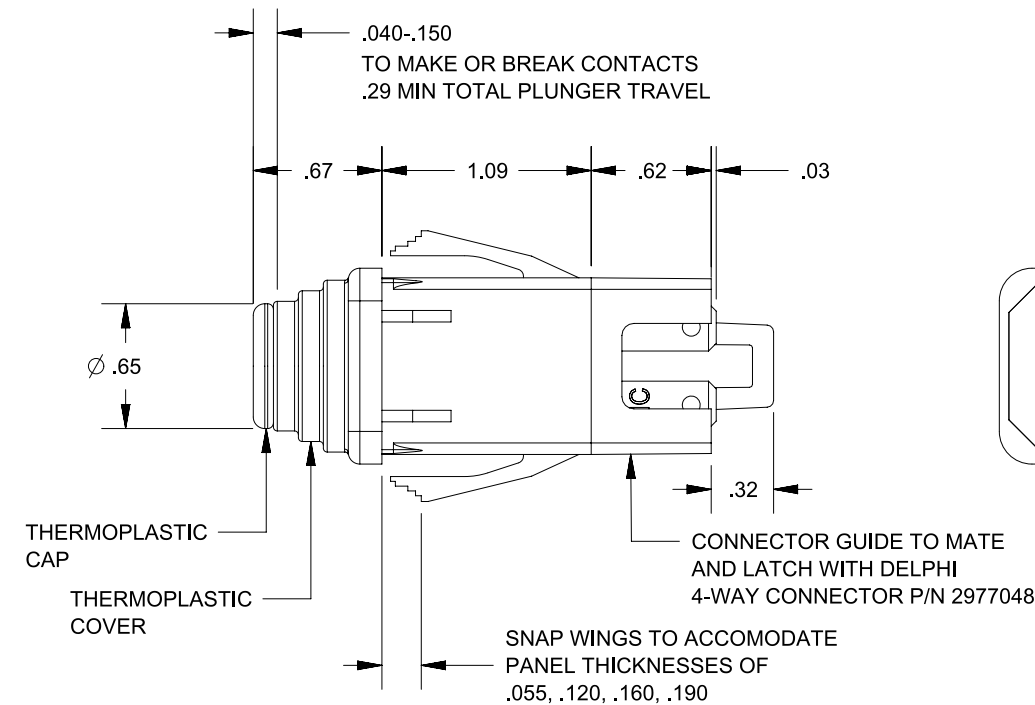
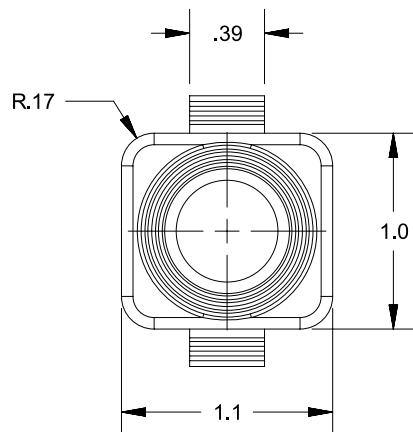


RECOMMENDED MOUNTING HOLE



SECTION A-A

BREAK OUT OPPOSITE TO SWITCH MOUNTING SURFACE



NOTES

- 1) NC STAMPED ON ALL NORMALLY CLOSED TERMINALS
- 2) PLASTIC PARTS-POLYPROPYLENE
TERMINALS - NICKEL-PLATED BRASS
- 3) DATE CODE INDICATING YEAR, MONTH, AND DAY OF MONTH MANUFACTURED MARKED ON HOUSING
- 4) INTEGRITY OF WELD AND SWITCH FUNCTIONALITY TESTED AFTER ASSEMBLY.
- 5) SWITCH BODY IS GRAY, PLUNGER COVER IS BLACK.
- 6) NC POLE BREAKS CONTACT BEFORE THE NO POLE MAKES CONTACT.
- 7) INTERPRET THIS DRAWING IN ACCORDANCE WITH ASME Y14.5-2009

PROPRIETARY & CONFIDENTIAL THE INFORMATION CONTAINED IN THIS DRAWING IS THE SOLE PROPERTY OF DELTA SYSTEMS. ANY REPRODUCTION IN PART OR AS A WHOLE WITHOUT THE WRITTEN PERMISSION OF DELTA SYSTEMS IS PROHIBITED.	UNLESS OTHERWISE SPECIFIED DIMENSIONS ARE IN INCHES TOLERANCES ARE: .X ± .1 .XX ± .02 .XXX ± .005 X° ± 1°	DRAWN malbrecht	DATE 21-Nov-2003	1734 FROST ROAD STREETSBORO, OHIO 44241 330-626-2811 WWW.DELTASYSTEMSINC.COM	
		CHECKED jmichaud	DATE 17-Aug-2004		
		APPROVED ikirbawy	DATE 04-Nov-2015		
		DELTA SYSTEMS INC. DOES NOT ASSUME ANY LIABILITY ARISING OUT OF THE MISAPPLICATION OF ANY PRODUCT	COMPUTER GENERATED DRAWING - NO MANUAL CHANGES ALLOWED	MATERIAL SEE NOTES	FINISH SEE NOTES
		DO NOT SCALE DRAWING	STATUS DS4_Design	SIZE B	DWG. NO. 6710-01B_APP
		SCALE NTS	SHEET 1 OF 1	PROJECT NO. EX357	REVISION 5

8

7

6

5

4

3

2

1