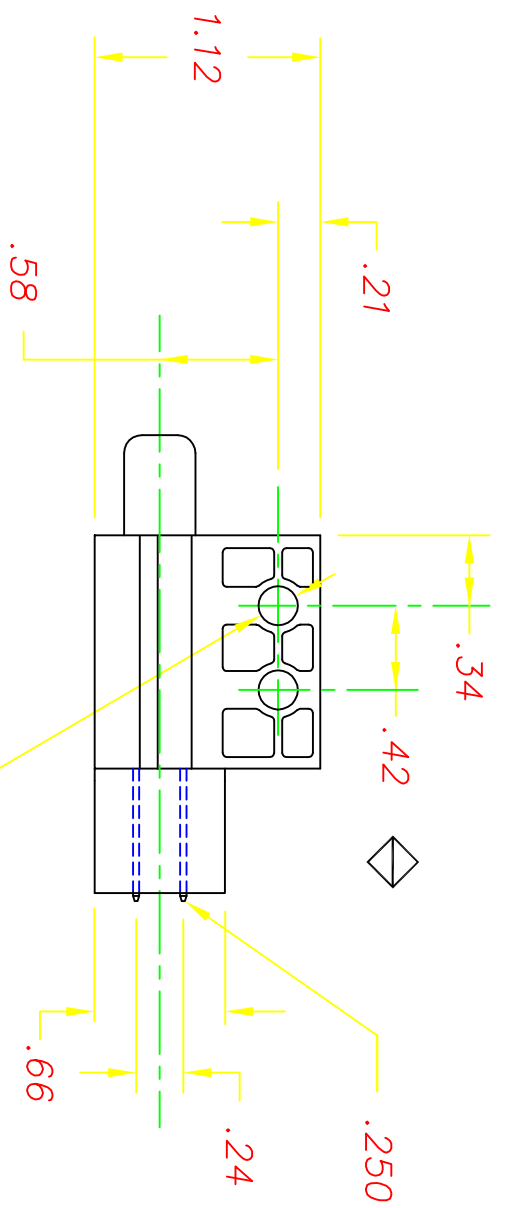
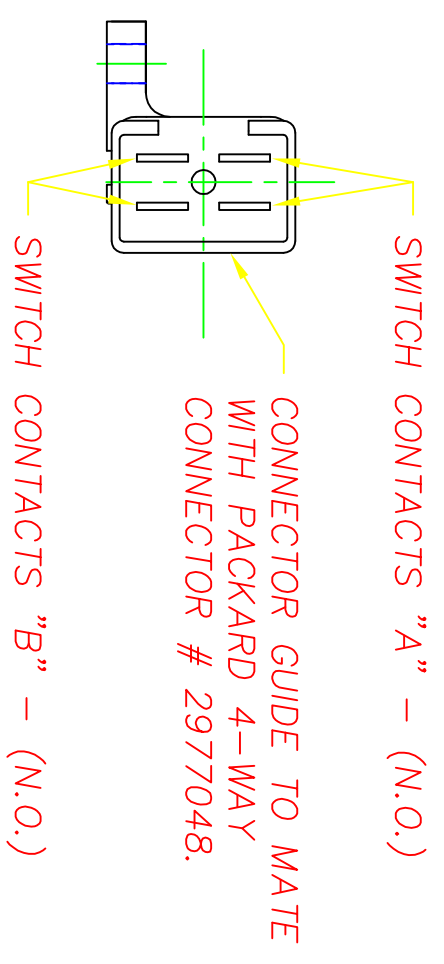
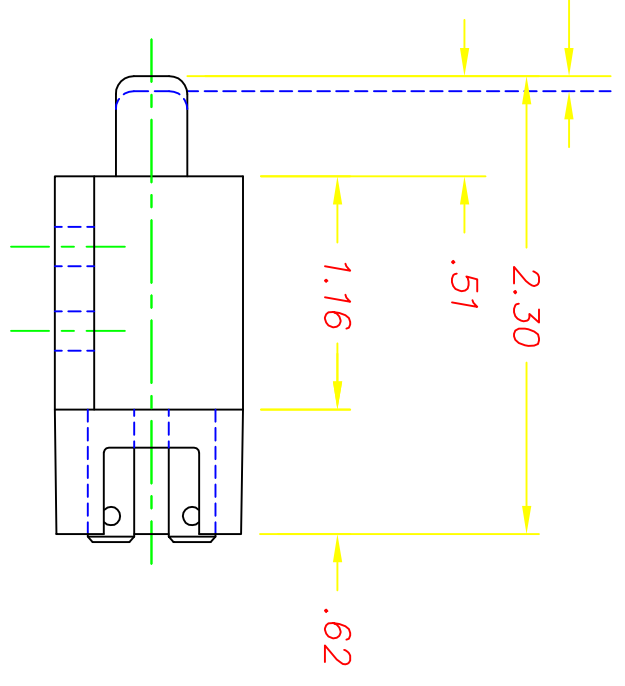
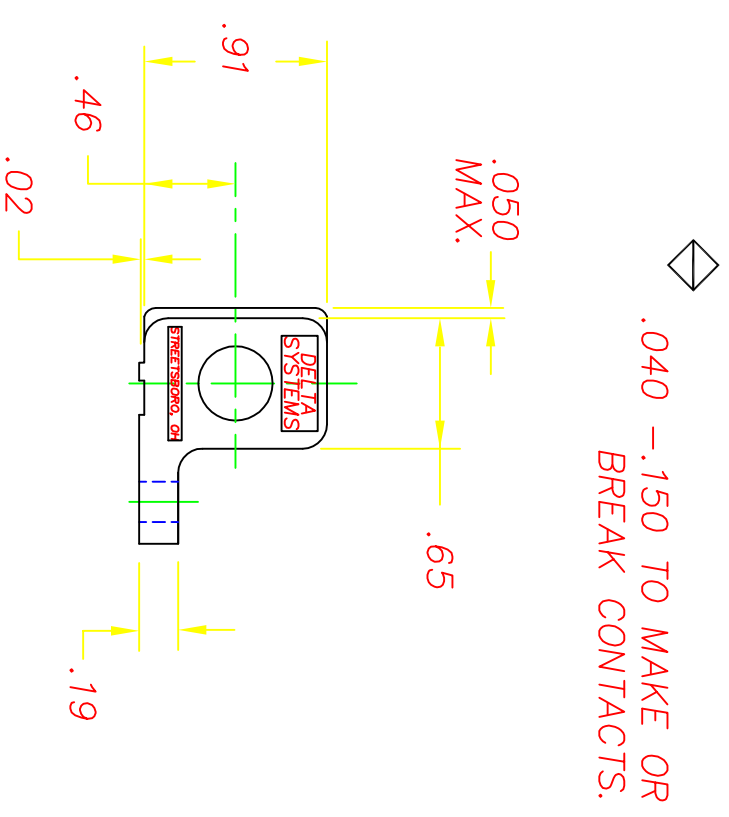



REVISIONS			
E	ADDED NAME TO HOUSING, CR1017	08/19/97	TW
F	SWITCH BUTTON NOW BLACK, CR1058	11/13/97	JH
"	REMOVED COLOR IDENTIFIER	" "	"
G	REVISED BUTTON MATERIAL, CR1098	02/18/98	JH
H	BUTTON MAT'L WAS ACETAL, CR1517	07/01/03	MA
J	ADD NOTE 6, CN 0976	04/01/05	JH
K	UPDATE MATERIAL, CR1908	07/21/10	ERB



**NOTES:**

- 1-TERMINALS ARE NICKEL PLATED
- 2-PLASTIC PARTS ARE POLYPROPYLENE
- 3-DATE CODE INDICATING YEAR, MONTH, & DAY OF MONTH MANUFACTURED STAMPED ON HOUSING.
- 4-INTEGRITY OF WELD & SWITCH FUNCTIONALITY TESTED AFTER ASSEMBLY.
- 5-THIS PRODUCT COVERED BY THE FOLLOWING U.S. PATENT; 4,812,604. OTHER PATENTS APPLIED FOR.
- 6-HOUSING & CAP ARE GRAY & PLUNGER IS BLACK

(K)

 <p><b>DELTA</b> SYSTEMS INC. STREETSBORO, OHIO 44241</p>		<p>DELTA SYSTEMS, INC. DOES NOT ASSUME ANY LIABILITY ARISING OUT OF THE MISAPPLICATION OF ANY PRODUCT</p>	
<p>COMPUTER GENERATED DRAWING - NO MANUAL CHANGES ALLOWED</p>		<p>UNLESS OTHERWISE SPECIFIED DIMENSIONS ARE IN INCHES TOLERANCES ARE:          .XX± .02 .XXX± .010 ANGE</p>	
<p>DRAWN <b>GAS</b></p>	<p>DATE <b>06/10/91</b></p>	<p>CHECKED <b>TW</b></p>	<p>DATE <b>06/10/91</b></p>
<p>MATERIAL <b>AS NOTED</b></p>		<p>FINISH <b>SEE NOTE 6</b></p>	
<p>SIZE <b>B</b></p>		<p>DWG. NO. <b>6400-02</b></p>	
<p>SCALE <b>FULL</b></p>		<p>PROJECT NO. <b>EX311</b></p>	
<p>TITLE <b>N.O./N.O. PLUNGER SWITCH (DOUBLE POLE)</b></p>		<p>REV <b>K</b></p>	