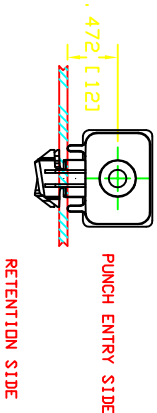
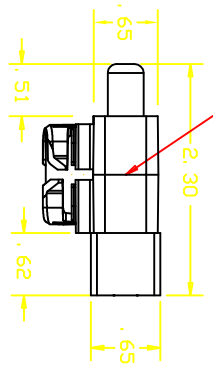


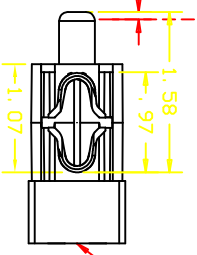
RECOMMENDED MOUNTING SLOT
 SWITCH WILL ACCEPT 2mm AND 5mm PANEL THICKNESS INCLUDING PAINT, DECALS, ETC.
 *SQUARE EDGE REQUIRED ON WING RETENTION SIDE OF SLOT.



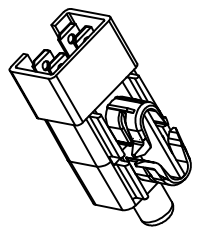
PUNCH ENTRY SIDE
 RETENTION SIDE
 .040-.150 TO MAKE DR. BREAK CONTACTS



DATE CODE STAMPED ON BODY OF SWITCH

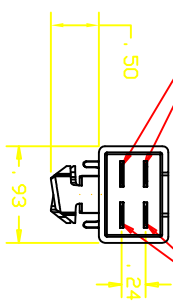


.250 X .032 MALE TERMINALS (4) MATE WITH PACKARD 56 SERIES FEMALE. (NOTE 1)



SWITCH CONTACTS 'A' - (N.C.)

SWITCH CONTACTS 'B' (N.O.)



REVISIONS	
~	RELEASED PER CR1486
A	PRINT CORRECTION, CN 0610
	06/28/02 JH
	01/10/03 JH

- NOTES:
- 1-TERMINALS ARE NICKEL PLATED
 - 2-PLASTIC PARTS ARE DELTON UV STABLE
 - 3-DATE CODE INDICATING YEAR, MONTH AND DAY OF MONTH MANUFACTURED STAMPED ON HOUSING.
 - 4-INTEGRITY OF WELD & SWITCH FUNCTIONALITY TESTED AFTER ASSEMBLY.
 - 5-THIS PRODUCT IS COVERED BY ONE OR MORE OF THE FOLLOWING U.S. PATENTS: 5,221,816; 5,424,502 4, 812, 604; OTHER PATENTS APPLIED FOR.

DELTA SYSTEMS, INC. DOES NOT ASSUME ANY LIABILITY ARISING OUT OF THE MISAPPLICATION OF ANY PRODUCT

UNLESS OTHERWISE SPECIFIED DIMENSIONS ARE IN INCHES TOLERANCES ARE:

XXXX .02 XXXX .005 ANGE 1*

COMPUTER GENERATED DRAWING - NO MANUAL CHANGES ALLOWED

DRWING	DATE
JLM	
CHECKED	DATE
JH	06/28/02
MATERIAL	
AS NOTED	
FINISH	
DLIVE	

DELTA SYSTEMS INC.
 STREETSBORO, OHIO 44241

TITLE
 N. D. /N. C. PLUNGER SWITCH
 (2mm & 5mm PANEL, DOUBLE POLE)

SIZE
 B

SCALE
 1X

PROJECT NO.
 6401-64

REV
 A