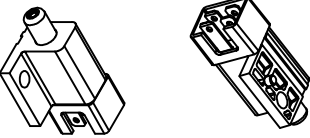
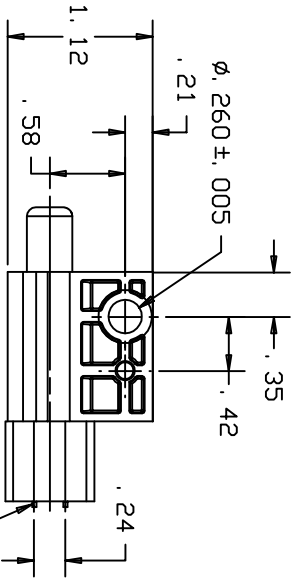
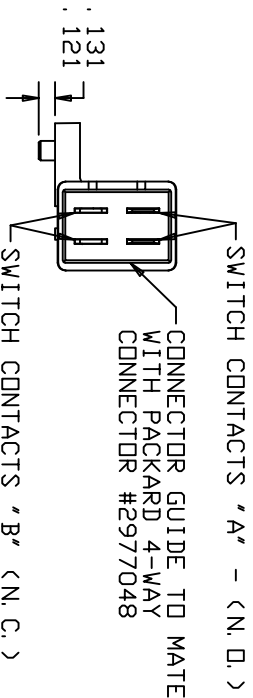
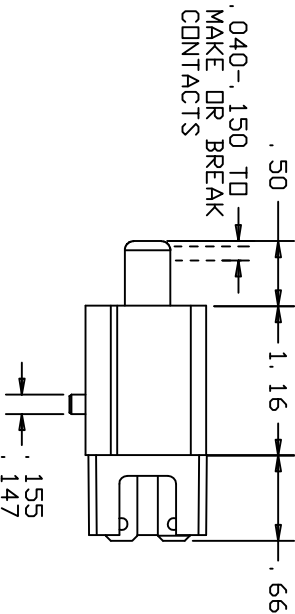
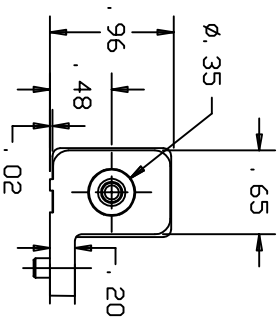


REVISIONS			
~	INITIAL RELEASE, CR1669	02/12/07	IDK
A	UPDATE MATERIAL CR1908	07/21/10	ERB



**NOTES:**

- 1) 'NC' STAMPED ON NORMALLY CLOSED TERMINALS.
- 2) TERMINALS NICKEL PLATED.
- 3) PLASTIC PARTS ARE POLYPROPYLENE.
- 4) DATE CODE INDICATING YEAR, MONTH AND DAY OF MANUFACTURE STAMPED ON HOUSING.
- 5) INTEGRITY OF WELD AND SWITCH FUNCTIONALITY TESTED AFTER ASSEMBLY.
- 6) THIS PRODUCT COVERED BY U. S. PATENT # 4,812,604
- 7) 'NC' POLE BREAKS CONTACT BEFORE 'ND' POLE MAKES CONTACT.
- 8) HOUSING IS BLACK, COVER AND PLUNGER ARE GRAY.
- 9) OPERATING FORCE 4.0 ± 1.5 LBS AT 0.400 DEPRESSION.

DELTA SYSTEMS, INC. DOES NOT ASSUME ANY LIABILITY ARISING OUT OF THE MISAPPLICATION OF ANY PRODUCT		DRAWN DATE MEL 09/19/06	
COMPUTER GENERATED DRAWING - NO MANUAL CHANGES ALLOWED		CHECKED DATE IDK 12/13/06	
UNLESS OTHERWISE SPECIFIED DIMENSIONS ARE IN INCHES TOLERANCES ARE:		MATERIAL SEE NOTE 3	
XX* 0.020, XXX* 0.010 ANG4/2/		FINISH SEE NOTE 8	
DD NOT SCALE DRAWING		TITLE N. D. /N. C. PLUNGER SWITCH	
SIZE B		DWG. NO. 6402-53	
SCALE 1:1		PROJECT NO. EX311	
DELTA SYSTEMS INC. STREETSBD, OHIO 44241		REV A	