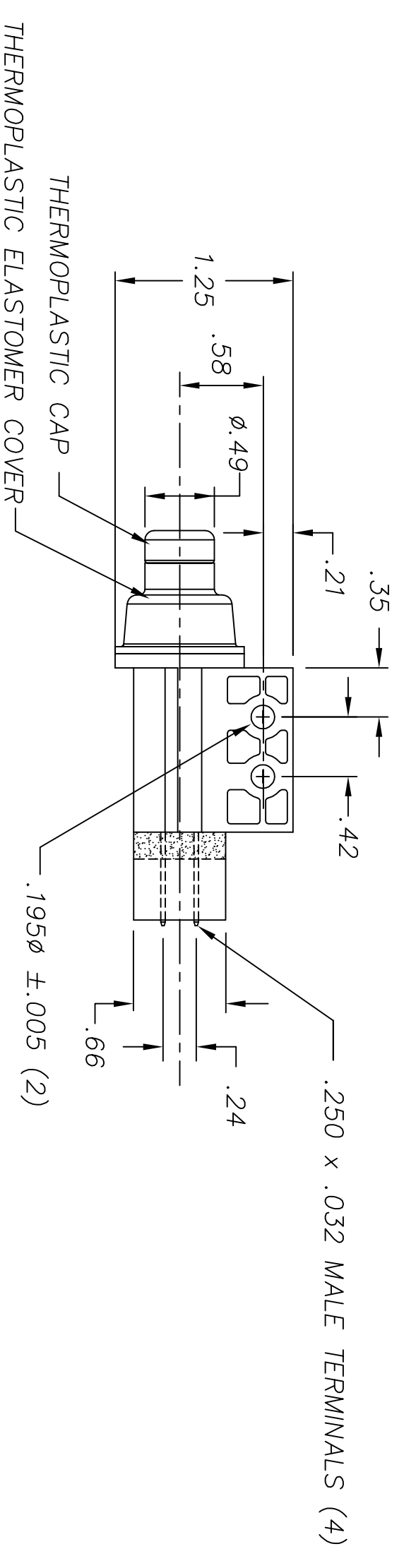
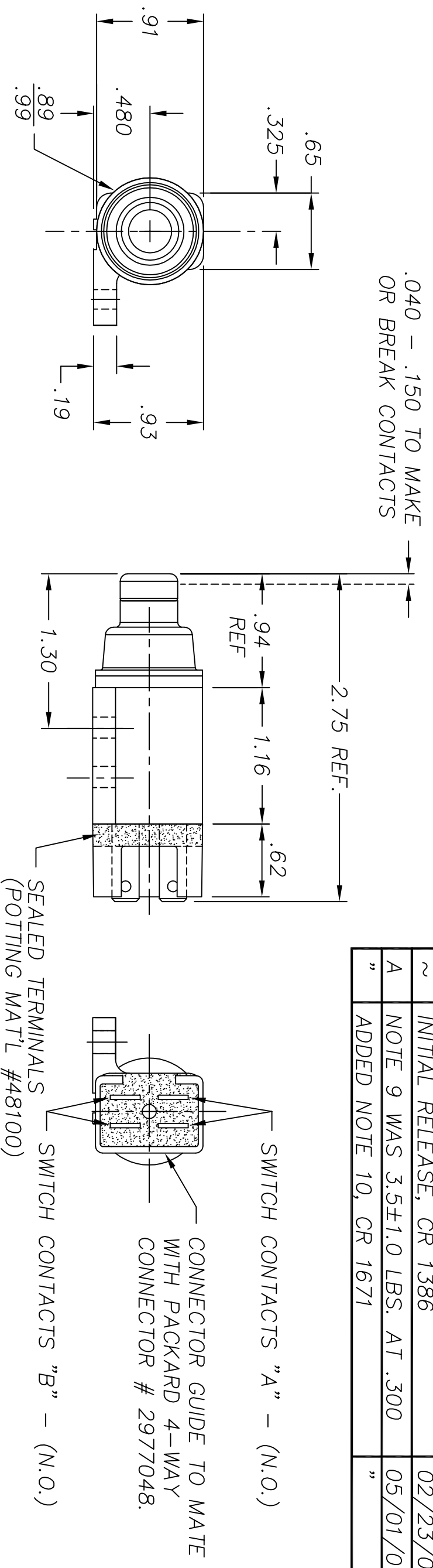


REVISIONS			
~	INITIAL RELEASE, CR 1386	02/23/01	JH
A	NOTE 9 WAS 3.5±1.0 LBS. AT .300	05/01/07	MA
"	ADDED NOTE 10, CR 1671	"	"



**NOTES:**

- 1-TERMINALS ARE NICKEL PLATED
- 2-PLASTIC PARTS ARE DELTON™, UV STABLE, FUEL RESISTANT THERMOPLASTIC. PROTECTIVE COVER IS THERMOPLASTIC ELASTOMER.
- 3-DATE CODE INDICATING YEAR, MONTH, & DAY OF MONTH MANUFACTURED STAMPED ON HOUSING.
- 4-INTEGRITY OF WELD & SWITCH FUNCTIONALITY TESTED AFTER ASSEMBLY.
- 5-THIS PRODUCT COVERED BY THE FOLLOWING U.S. PATENT; 4,812,604. OTHER PATENTS APPLIED FOR.
- 6-TOTAL TRAVEL OF PLUNGER IS .47 FROM REST POSITION.
- 7-ELECTRICAL RATING: 3A @ 12-14VDC.
- 8-CONNECTING EFFORT: UP TO 10 LBS. PER TERMINAL
- 9-OPERATING FORCE: 6.0 +/- 1.0 LBS. AT .400 TRAVEL
- 10-ASSEMBLY IS ROHS COMPLIANT.

<p>DELTA SYSTEMS, INC. DOES NOT ASSUME ANY LIABILITY ARISING OUT OF THE MISAPPLICATION OF ANY PRODUCT</p>		<p>UNLESS OTHERWISE SPECIFIED DIMENSIONS ARE IN INCHES TOLERANCES ARE:</p> <p>.XX± .02 .XXX± .010 ANG±</p>	
<p>COMPUTER GENERATED DRAWING - NO MANUAL CHANGES ALLOWED</p>		<p>DO NOT SCALE DRAWING</p>	
<p>DRAWN JAB</p>	<p>DATE 05/18/99</p>	<p>FINISH GRAY SWITCH HOUSING BLACK TERMINAL COVER BLACK CAP/COVER</p>	
<p>CHECKED MA</p>	<p>DATE 05/08/07</p>	<p>MATERIAL AS NOTED</p>	
<p>TITLE N.O./N.O. SEALED PLUNGER SWITCH</p>		<p>SIZE B</p>	<p>DWG. NO. 6420-02</p>
<p>SCALE FULL</p>		<p>PROJECT NO. EX363</p>	<p>REV A</p>

**DELTA**  
SYSTEMS INC.  
STREETSBORO, OHIO 44241