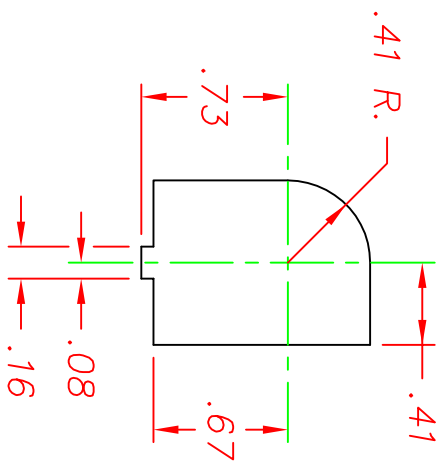
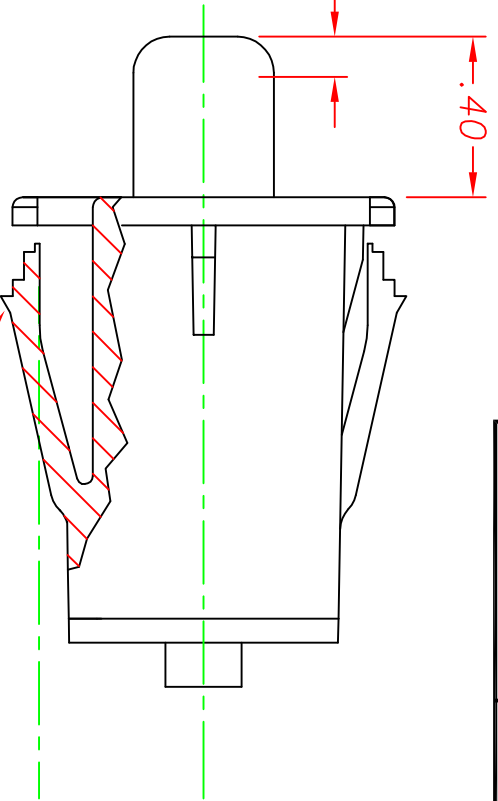


REVISIONS			
D	ADDED DELTA NAME TO HSG., CR 908	01/24/97	TW
E	REVISED SNAP WING NOTE, CR 1003	07/17/97	TW
F	ADDED WING MOD, CR1427	11/09/02	MA
G	REVISED TAB & CONCTR P/N, CR1627	02/24/06	MA
H	UPDATE MATERIAL, CR1908	07/21/10	ERB



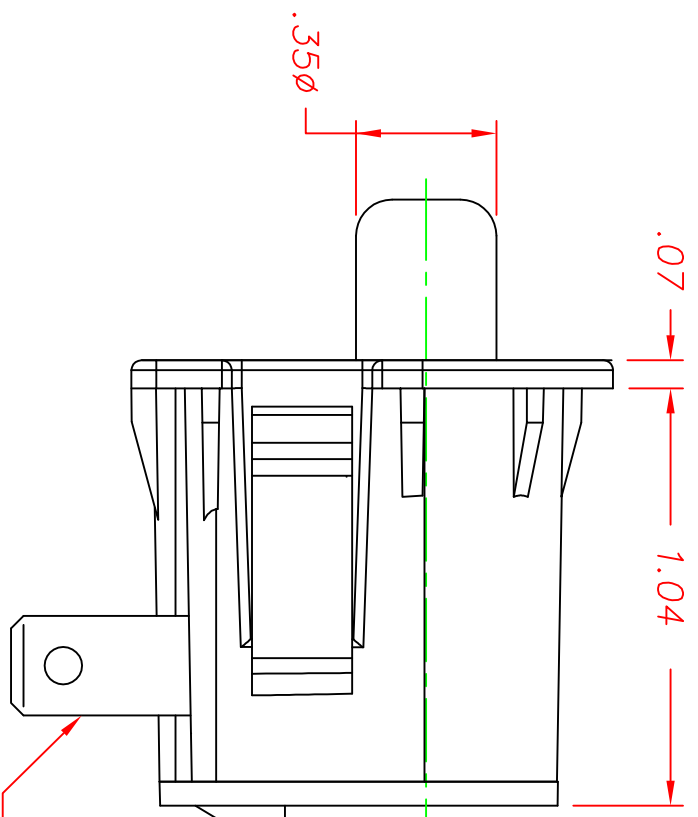
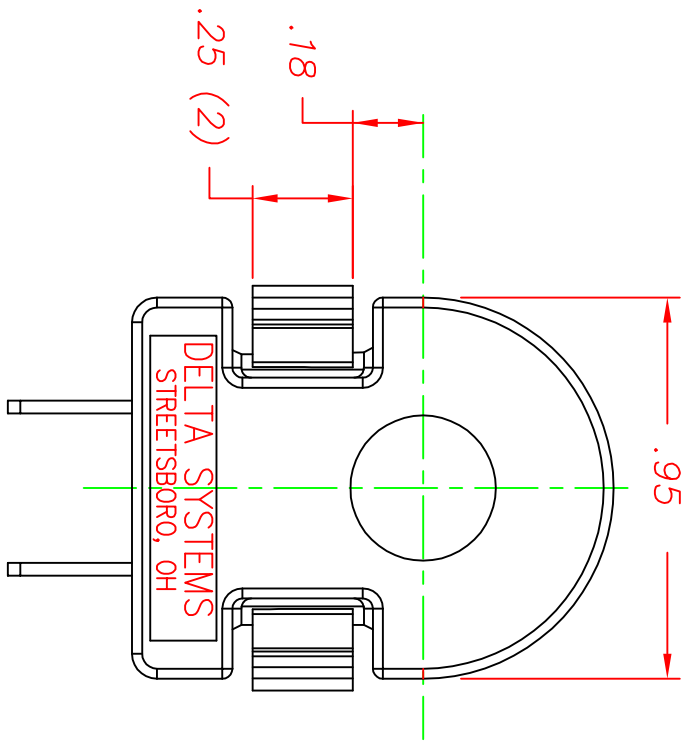
.040 - .150 MOTION TO MAKE OR BREAK CONTACTS.



SNAP WINGS TO ACCOMMODATE PANEL THICKNESSES OF .055, .115, AND .140, INCLUDING PAINT AND DECALS.

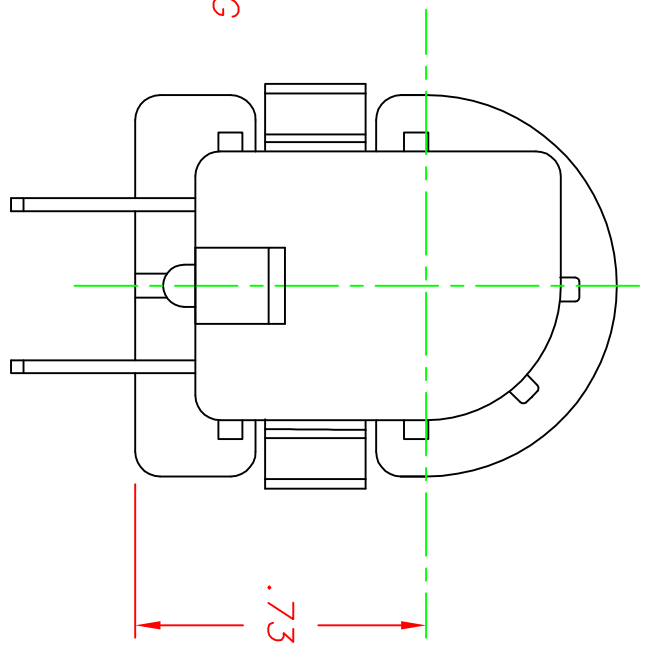
SUGGESTED MOUNTING HOLE

(SCALE: FULL)



TERMINAL PATTERN & LOCKING TAB TO MATE WITH EITHER DSI 96525 SERIES OR 96526 SERIES CONNECTORS

.25 x .032 MALE BLADE TERMINALS (2)



NOTES:

- 1 - PLASTIC PARTS ARE POLYPROPYLENE TERMINALS ARE NICKEL-PLATED BRASS.
- 2 - DATE CODE INDICATING YEAR, MONTH, AND DAY OF MONTH MANUFACTURED STAMPED ON HOUSING.
- 3 - INTEGRITY OF WELD & SWITCH FUNCTIONALITY TESTED AFTER ASSEMBLY.
- 4 - THIS PRODUCT COVERED BY THE FOLLOWING U.S. PATENT; 4,812,604. OTHER PATENTS APPLIED FOR.

DELTA SYSTEMS, INC. DOES NOT ASSUME ANY LIABILITY ARISING OUT OF THE MISAPPLICATION OF ANY PRODUCT

UNLESS OTHERWISE SPECIFIED DIMENSIONS ARE IN INCHES TOLERANCES ARE:

.XXX# .02 .XXX# .005 ANG# ~

DO NOT SCALE DRAWING

DRAWN	DATE
AJC	06/05/92
CHECKED	DATE
TW	06/03/92
MATERIAL	
NOTE 1	
FINISH	
BLACK	

 <p><b>DELTA</b> SYSTEMS INC. STREETSBORO, OHIO 44241</p>			
<p>SNAP-MOUNT SWITCH NORMALLY OPEN</p>			
SIZE	DWG. NO.	PROJECT NO.	REV
B	6440-04	E-323	H
SCALE	SHEET	OF	
2X	1	1	