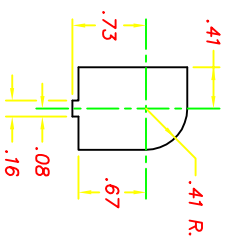
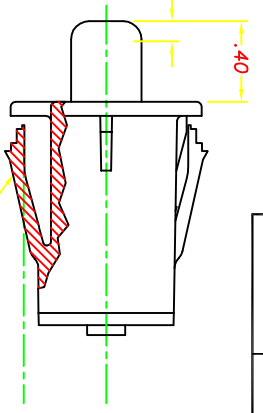


COMPUTER GENERATED DRAWING - NO MANUAL CHANGES

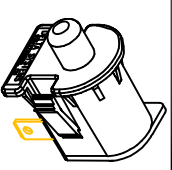
REV	DESCRIPTION	DATE	BY
B	ADDED DELTA NAME TO HSG., CR 908	01/24/97	TW
C	REVISED SNAP WING NOTE, CR 1003	07/17/97	JH
D	ADDED WING MOD, CR1427	11/09/02	MA
E	UPDATE MATERIAL CR1908	07/21/10	ERB



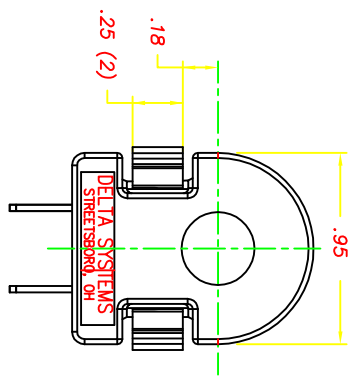
SUGGESTED MOUNTING HOLE
(SCALE: FULL)



SNAP WINGS TO ACCOMMODATE PANEL THICKNESSES OF .055, .115, AND .140.

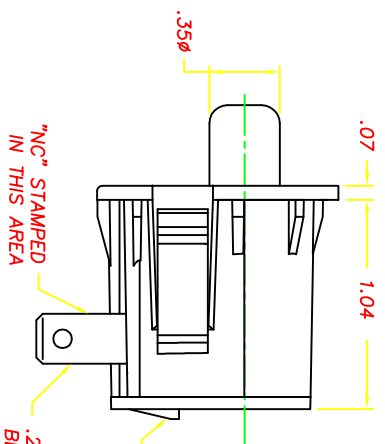


ISOMETRIC VIEW

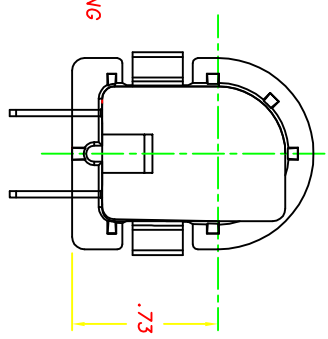


NOTES:

- 1-PLASTIC PARTS ARE POLYPROPYLENE
- 2-DATE CODE INDICATING YEAR, MONTH, AND DAY OF MONTH MANUFACTURED STAMPED ON HOUSING.
- 3-INTEGRITY OF WELD & SWITCH FUNCTIONALITY TESTED AFTER ASSEMBLY.
- 4-THIS PRODUCT COVERED BY THE FOLLOWING PATENTS APPLIED FOR: U.S. PATENT; 4,812,604; OTHER PATENTS APPLIED FOR.



TERMINAL PATTERN & LOCKING TAB TO MATE WITH DSI SHORTING CONNECTOR, P/N 96525-GY



DELTA SYSTEMS, INC. DOES NOT ASSUME ANY LIABILITY ARISING OUT OF THE MISAPPLICATION OF ANY PRODUCT UNLESS OTHERWISE SPECIFIED. DIMENSIONS ARE IN INCHES. TOLERANCES ARE: ANG. .02 .005 ANG. ~		DRAWN: AUC CHECKED: TW DATE: 06/03/92 MATERIAL: NOTE 1 FINISH: GRAY	TITLE: SNAP-MOUNT SWITCH NORMALLY CLOSED PROJECT NO: E-316 REV: E
DELTA SYSTEMS INC. STREETSBORO, OHIO 44241		SCALE: 2X SHEET: 1 OF 1	DATE: 09/03/92 DATE: 06/03/92