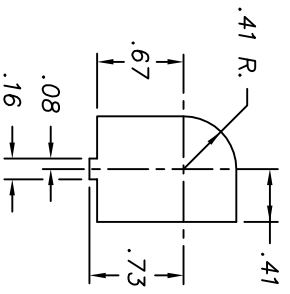
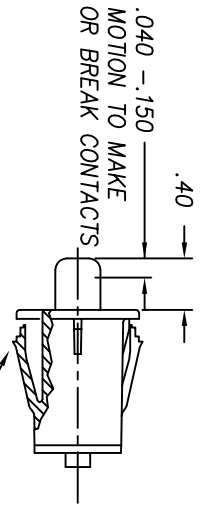


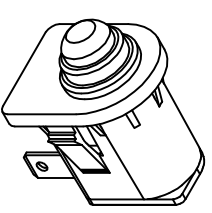
REVISIONS			
A	REVISED SNAP WING NOTE, CR 1003	07/17/97	JH
B	ADDED SPEC NOTES, CR1273	02/22/99	JH
C	CHANGED DIM. PER CR1342	9/15/99	JH
D	ADDED WING MOD., CR1427	11/09/02	MA
E	REVISED TAB & CONCTR P/N, CR1627	02/24/06	MA
F	REMOVED COLOR IDENTIFIER, CN1683	05/21/08	MA
G	UPDATE MATERIAL CR1908	07/21/10	ERB



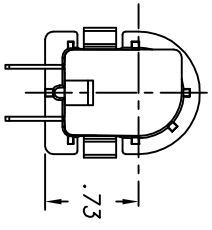
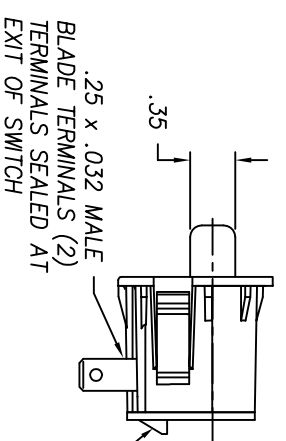
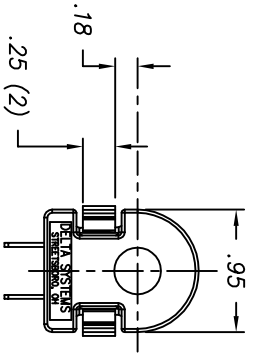
SUGGESTED MOUNTING HOLE



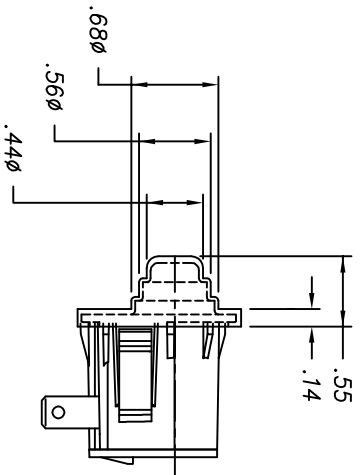
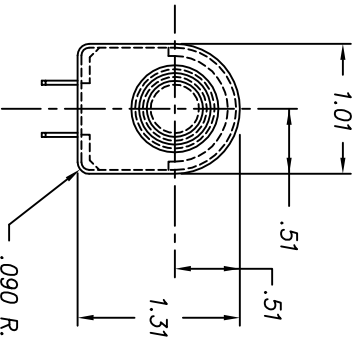
WITH COVER ON SWITCH, SNAP WINGS TO ACCOMMODATE PANEL THICKNESSES OF .060 AND .085, INCLUDING PAINT AND DECALS.



ISOMETRIC VIEW



TERMINAL PATTERN & LOCKING TAB TO MATE WITH EITHER DSI 96525 SERIES OR 96526 SERIES CONNECTORS



DIM.'S SHOWN HERE ARE WITH COVER INSTALLED ON SWITCH

NOTES:

- 1-PLASTIC PARTS - POLYPROPYLENE
- TERMINALS - NICKEL PLATED BRASS.
- CONTACT - BERYLLIUM COPPER.
- BOOT - THERMOPLASTIC ELASTOMER.
- 2-DATE CODE INDICATING YEAR, MONTH, AND DAY OF MONTH MANUFACTURED STAMPED ON HOUSING.
- 3-INTEGRITY OF WELD AND SWITCH FUNCTIONALITY TESTED AFTER ASSEMBLY.
- 4-THIS PRODUCT COVERED BY THE FOLLOWING U.S. PATENT: 4,812,604.
- FOLLOWING U.S. PATENT: 4,812,604. OTHER PATENTS APPLIED FOR.
- 5-ELECTRICAL RATING: 5A @ 12-14VDC.
- 6-LIFE AT RATED LOAD: 10K CYCLES INDUCTIVE, 75K CYCLES RESISTIVE.
- 7-MECHANICAL LIFE: 300,000 CYCLES.
- 8-OPERATING TEMPERATURE: -20F TO 150F.
- 9-CONNECTION EFFORT: UP TO 10 LBS. PER TERMINAL
- 10-OPERATING FORCE: 3 LBS.

COMPUTER GENERATED DRAWING - NO MANUAL CHANGES ALLOWED		UNLESS OTHERWISE SPECIFIED DIMENSIONS ARE IN INCHES TOLERANCES ARE .02 XXXX .005 ANGR	
DELTA SYSTEMS, INC. DOES NOT ASSUME ANY LIABILITY ARISING OUT OF THE MISAPPLICATION OF ANY PRODUCT		DO NOT SCALE DRAWING	

DRAWN DATE LMM 03/05/97		 <p>DELTA SYSTEMS INC. STREETSBORO, OHIO 44241</p>
CHECKED DATE TW 03/06/97		
MATERIAL SEE NOTE 1		TITLE N.O. SNAP MOUNT SWITCH WITH BeCu CONTACT
SIZE C	DWG. NO. 6440-62	PROJECT NO. E-311
SCALE FULL		REV G