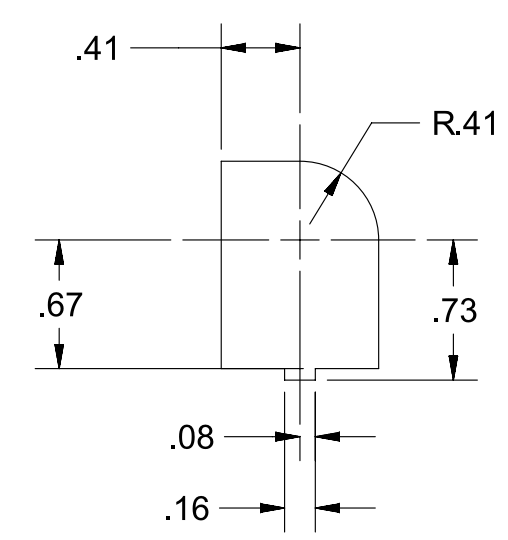
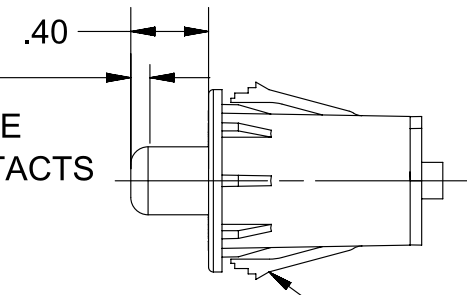


REVISIONS			
REV.	DESCRIPTION	DATE	INIT
A	CHANGED DIM. PER CR1342	09/15/99	JH
B	ADDED WING MOD., CR1427	11/09/02	MA
C	UPDATE TOLERANCE, CN2224	12/22/09	MEL
D	UPDATE MATERIAL CR1908	07/21/10	ERB
5	REDREW, (.56) WAS .55, .72 WAS .73, 1.0 WAS 1.01, .5 WAS .51, 1.3 WAS 1.27±.03, REMOVED PATENT NOTE, ADDED ASME NOTE	10/17/16	IDK

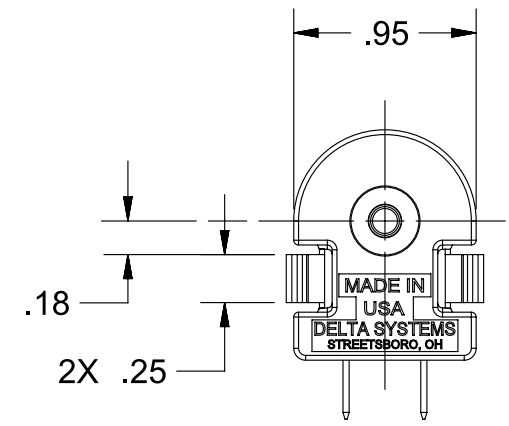


RECOMMENDED MOUNTING HOLE

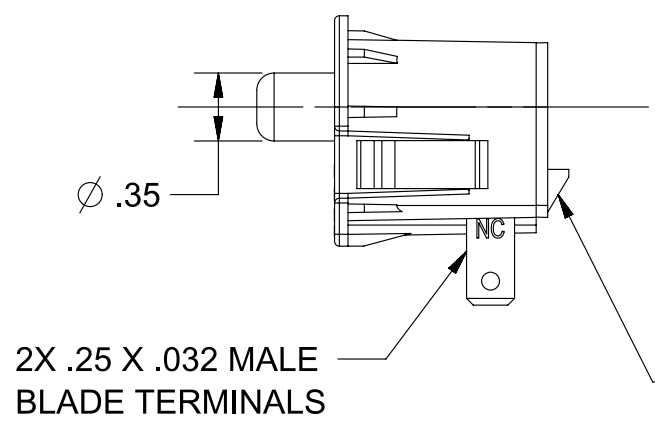
.040 - .150  
MOTION TO MAKE  
OR BREAK CONTACTS



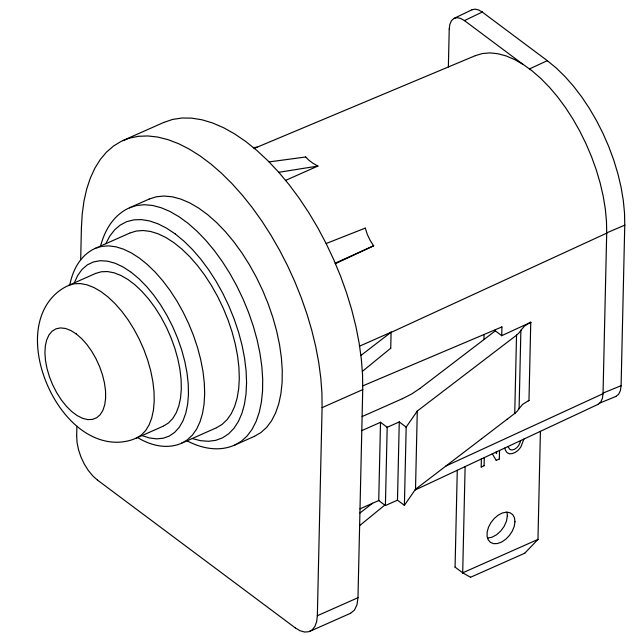
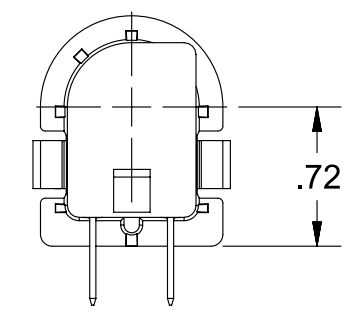
WITH COVER ON SWITCH, SNAP WINGS  
TO ACCOMMODATE PANEL THICKNESS  
OF .060 AND .085, INCLUDING PAINT AND DECALS



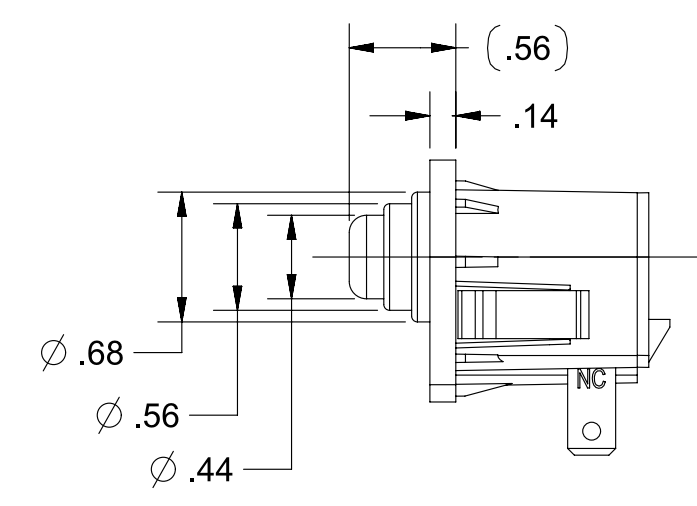
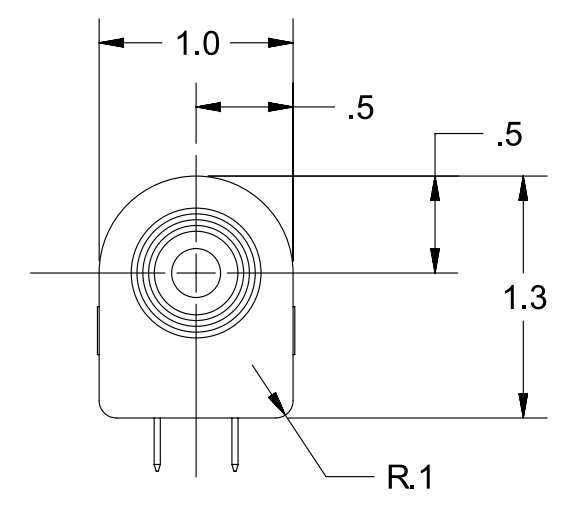
DIMENSIONS FOR BASE SWITCH



TERMINAL PATTERN & LOCKING  
TAB TO MATE WITH DSI SHORTING  
CONNECTOR, P/N 96525-GY



ISOMETRIC VIEW



DIMENSIONS SHOWN HERE ARE WITH COVER INSTALLED ON SWITCH

NOTES

- 1) PLASTIC PARTS - POLYPROPYLENE  
TERMINALS - NICKEL-PLATED BRASS  
CONTACT - PHOSPHOR BRONZE  
BOOT - THERMOPLASTIC ELASTOMER
- 2) DATE CODE INDICATING YEAR, MONTH, AND DAY OF MONTH MANUFACTURED STAMPED ON HOUSING
- 3) INTEGRITY OF WELD & SWITCH FUNCTIONALITY TESTED AFTER ASSEMBLY
- 4) INTERPRET THIS DRAWING IN ACCORDANCE WITH ASME Y14.5-2009

PROPRIETARY & CONFIDENTIAL THE INFORMATION CONTAINED IN THIS DRAWING IS THE SOLE PROPERTY OF DELTA SYSTEMS. ANY REPRODUCTION IN PART OR AS A WHOLE WITHOUT THE WRITTEN PERMISSION OF DELTA SYSTEMS IS PROHIBITED.	UNLESS OTHERWISE SPECIFIED DIMENSIONS ARE IN INCHES TOLERANCES ARE: .X± .1 .XX± .02 .XXX± .005 X°± 1	DRAWN dmr	DATE 25-Jun-1999	<b>DELTA SYSTEMS</b> 1734 FROST ROAD STREETSBORO, OHIO 44241 330-626-2811 WWW.DELTASYSTEMSINC.COM		
		CHECKED jharvey	DATE 25-Jun-1999			
DELTA SYSTEMS INC. DOES NOT ASSUME ANY LIABILITY ARISING OUT OF THE MISAPPLICATION OF ANY PRODUCT	COMPUTER GENERATED DRAWING - NO MANUAL CHANGES ALLOWED	APPROVED ikirbaw	DATE 17-Oct-2016	TITLE Plunger Switch, NC, Snap Mount, Boot		
		MATERIAL SEE NOTE 1	PROJECTED VIEWS ARE 3RD ANGLE	SIZE C	DWG. NO. 6440-73_APP	
		STATUS DS4_Design	SCALE NTS	SHEET 1 OF 1	PROJECT NO. EX311	REVISION 5