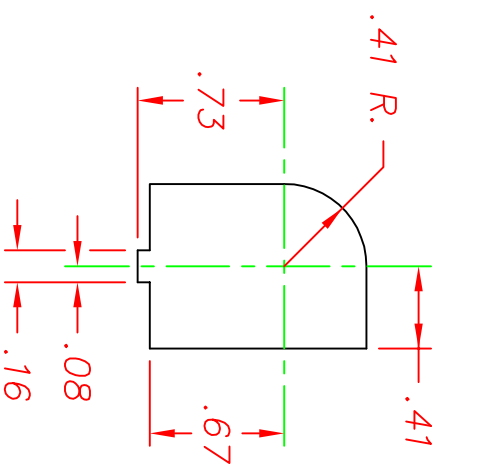
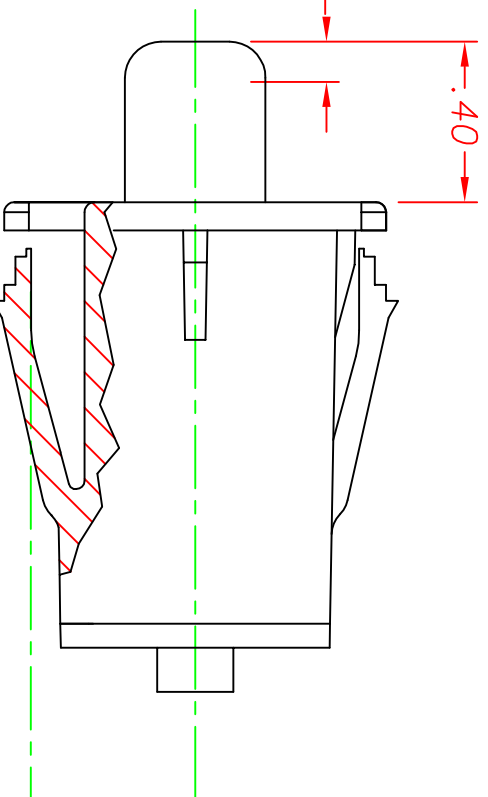


REVISIONS			
~	INITIAL RELEASE, CR 1448	12/04/01	JH
A	ADDED WING MOD, CR1427	11/9/02	JG
B	REVISED TAB & CONCTR P/N, CR1627	02/24/06	MA
C	UPDATE MATERIAL CR1908	07/21/10	ERB

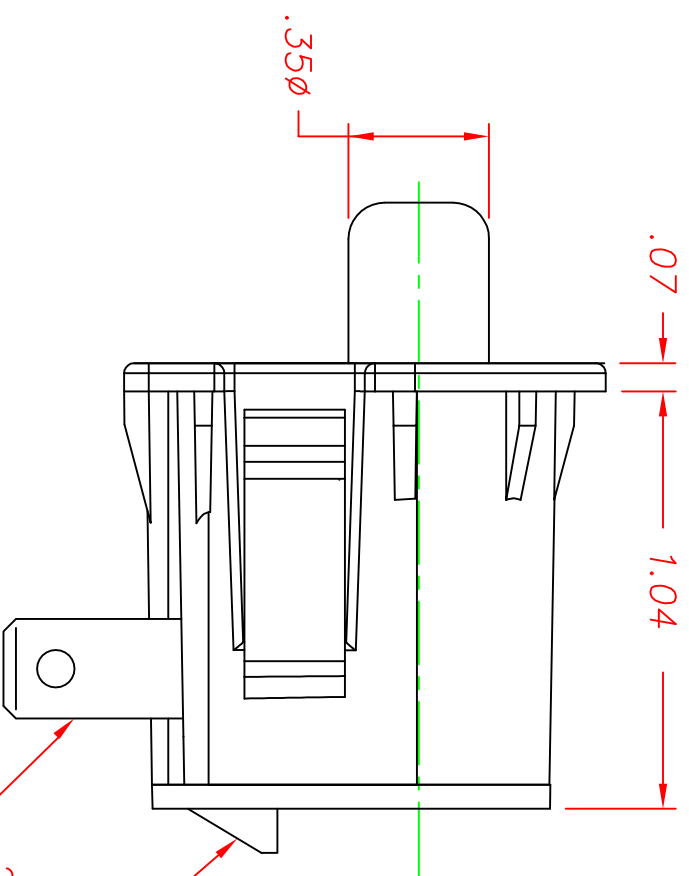
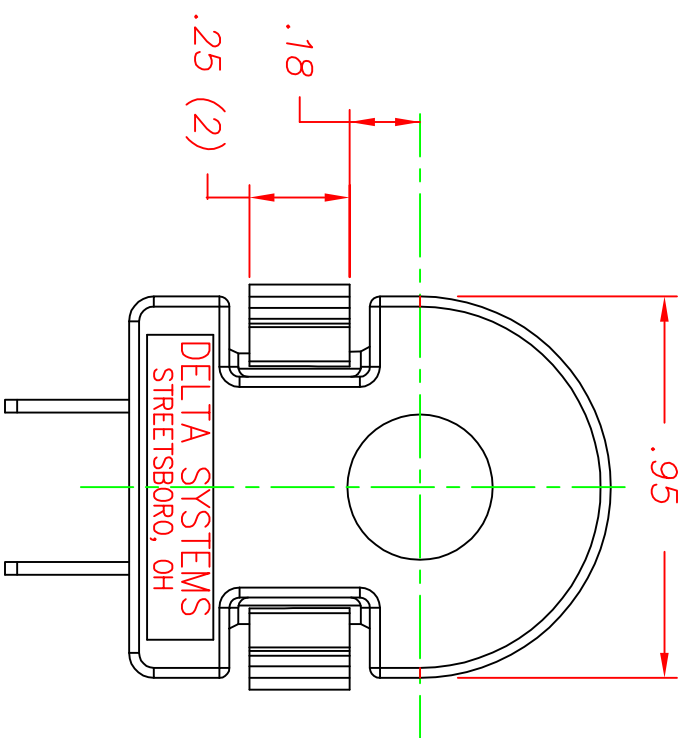


.040 - .150 MOTION TO MAKE OR BREAK CONTACTS.

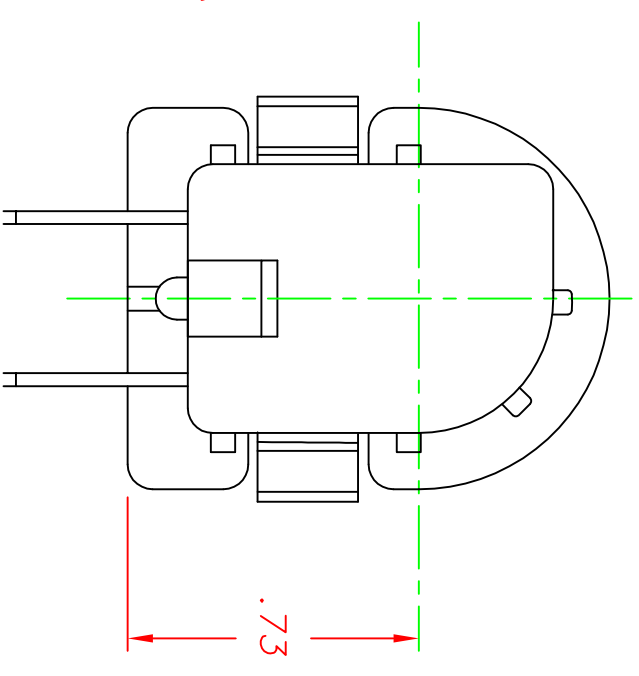


SNAP WINGS TO ACCOMMODATE PANEL THICKNESSES OF .055, .115, AND .140, INCLUDING PAINT AND DECALS.

SUGGESTED MOUNTING HOLE
(SCALE: FULL)



TERMINAL PATTERN & LOCKING TAB TO MATE WITH EITHER DSI 96525 SERIES OR 96526 SERIES CONNECTORS
 .25 x .032 MALE BLADE TERMINALS (2)



- NOTES:**
- 1 - PLASTIC PARTS ARE POLYPROPYLENE TERMINALS ARE NICKEL-PLATED BRASS.
 - 2 - SWITCH HOUSING AND BACK COVER ARE BLACK, PLUNGER IS GRAY.
 - 3 - DATE CODE INDICATING YEAR, MONTH, AND DAY OF MONTH MANUFACTURED STAMPED ON HOUSING.
 - 4 - INTEGRITY OF WELD & SWITCH FUNCTIONALITY TESTED AFTER ASSEMBLY.
 - 5 - THIS PRODUCT COVERED BY THE FOLLOWING U.S. PATENT; 4,812,604. OTHER PATENTS APPLIED FOR.

DELTA SYSTEMS, INC. DOES NOT ASSUME ANY LIABILITY ARISING OUT OF THE MISAPPLICATION OF ANY PRODUCT

COMPUTER GENERATED DRAWING - NO MANUAL CHANGES ALLOWED

UNLESS OTHERWISE SPECIFIED DIMENSIONS ARE IN INCHES TOLERANCES ARE:	XX# .02	XXX# .005	ANG# 1°
DRAWN	LMM	DATE	07/25/01
CHECKED	MA	DATE	07/25/01
MATERIAL	SEE NOTE 1		
FINISH	SEE NOTE 2		

DELTA
SYSTEMS INC.
STRETSBORO, OHIO 44241

SNAP MOUNT SWITCH
N.O. W/6# SPRING

SIZE **B** DWG. NO. **6440-604**

SCALE **2X** PROJECT NO. **EX311** REV **C**