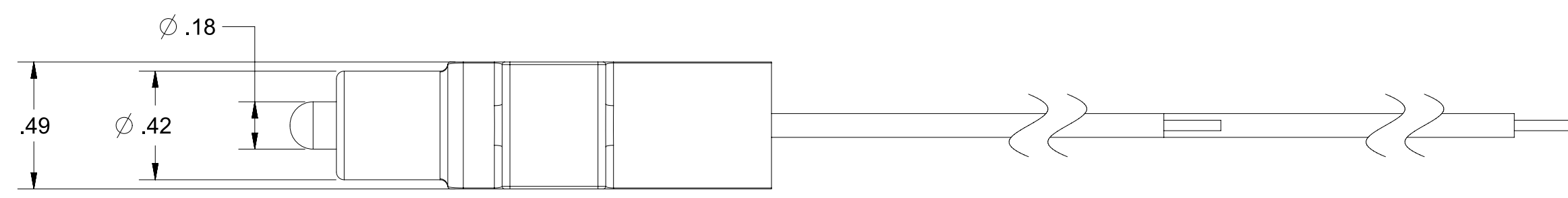
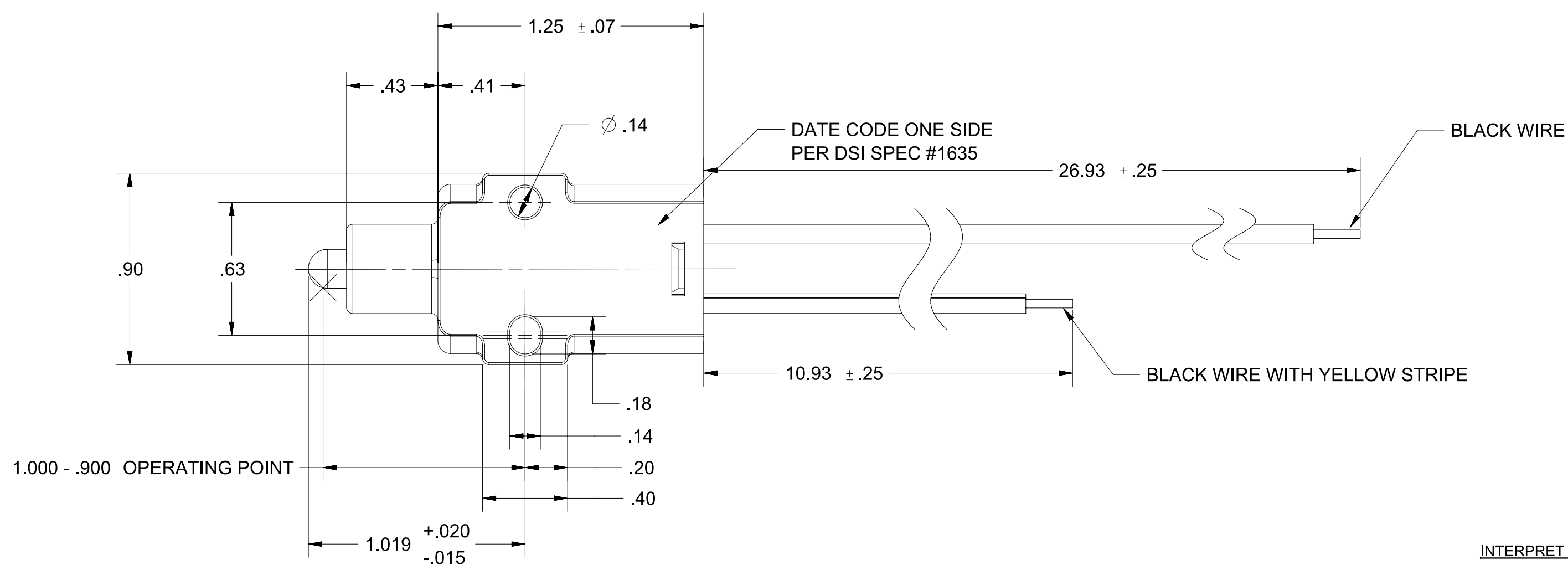


REVISIONS			
REV.	DESCRIPTION	DATE	INIT
0	INITIAL RELEASE	10/30/14	MJS
1	REMOVED NOTE FROM OPERATING POINT DIMENSION, REVISED OPERATING FORCE, CORRECTED OPERATING POINT TOLERANCE, ECO475	12/11/15	PJC



INTERPRET THIS DRAWING IN ACCORDANCE WITH ASME Y14.5-2009

**MATERIAL**

SWITCH BODY AND PLUNGER ARE UV STABLE ACETAL COPOLYMER WITH 12% GLASS FILL

**OPERATING CHARACTERISTICS**

CIRCUIT NORMALLY OPEN OPERATION  
OPERATING FORCE @ .060 IS 1.60 ± 0.5 LB

**NOTE**

EACH LEAD MUST NOT PULL OFF FROM SWITCH ASSEMBLY WITH AN 18 LB PULL FORCE APPLIED FOR ONE SECOND

**WIRE SPECIFICATIONS**

INSULATED WIRE MUST MEET SAE J1128  
18-AWG-41 STRANDS OF #34 TINNED COPPER WIRE  
125°C MIN SXL INSULATION .110 ± .010 DIA PER SAE J378

**WATERPROOF**

THIS TEST MUST BE DONE WITH DEIONIZED WATER WITH THE ADDITION OF TRITON 100 WETTING AGENT, (ONE DROP PER PINT OF WATER) TO ELIMINATE SURFACE TENSION BUBBLES.

- WITH THE PLUNGER AT REST:  
BUBBLES THAT ORIGINATE WITHIN THE SWITCH SHALL NOT BE RELEASED WHEN THE SWITCH, EXCLUDING THE LEAD WIRE ENDS, IS SUBMERGED IN A CONTAINER OF WATER SUBJECTED TO 20 INCHES Hg VACUUM FOR ONE MINUTE
- WITH THE PLUNGER DEPRESSED  
REPEAT AS ABOVE EXCEPT USE 10 INCHES Hg VACUUM

**CONTINUITY TEST**

SWITCH SHALL PASS CONTINUITY TEST BEFORE AND AFTER WATERPROOF AND CYCLE TESTS

- CURRENT LEAKAGE AT 500VDC SHALL NOT EXCEED 50 MICROAMPS, TEST SHALL BE PERFORMED WITH THE PLUNGER AT REST
- VOLTAGE DROP AT 3 AMPS (12-13 VDC) SHALL NOT EXCEED 150 MILLIVOLTS WHEN MEASURED BETWEEN LEADS WITHIN ONE INCH OF SWITCH BODY TEST SHALL BE PERFORMED WITH THE PLUNGER DEPRESSED

**CYCLE TEST**

SWITCH MUST PASS WATERPROOF TEST & CONTINUITY TEST BEFORE AND AFTER 50,000 CYCLES OF DISCHARGING A 1 MICRO FARRAD CAPACITOR CHARGE TO 350 VOLTS THROUGH A 10 OHM RESISTOR AT THE RATE OF 1.5 SECONDS "ON" AND 1.5 SECONDS "OFF"

**SWITCH**

INTERNAL RING CONTACT AND TERMINALS TO BE FINE SILVER PLATED TO .0001-.0003 THICK

PROPRIETARY & CONFIDENTIAL THE INFORMATION CONTAINED IN THIS DRAWING IS THE SOLE PROPERTY OF DELTA SYSTEMS. ANY REPRODUCTION IN PART OR AS A WHOLE WITHOUT THE WRITTEN PERMISSION OF DELTA SYSTEMS IS PROHIBITED.  DELTA SYSTEMS INC. DOES NOT ASSUME ANY LIABILITY ARISING OUT OF THE MISAPPLICATION OF ANY PRODUCT	UNLESS OTHERWISE SPECIFIED DIMENSIONS ARE IN INCHES TOLERANCES ARE: .X ± .1 .XX ± .02 .XXX ± .005 X° ± 1	DRAWN mschwenning DATE 30-Oct-2014	<b>DELTA SYSTEMS</b> 1734 FROST ROAD STREETSBORO, OHIO 44241 330-626-2811 WWW.DELTASYSTEMSINC.COM
	CHECKED bkirkman DATE 17-Dec-2014	DATE 17-Dec-2014	
	APPROVED ikirbawy DATE 16-Jun-2015	DATE 16-Jun-2015	
	COMPUTER GENERATED DRAWING - NO MANUAL CHANGES ALLOWED	MATERIAL N/A FINISH N/A DO NOT SCALE DRAWING	PROJECTED VIEWS ARE 3RD ANGLE 
		STATUS DS4_Design	SCALE NTS SHEET 1 OF 1 PROJECT NO. EX0257 REVISION 1