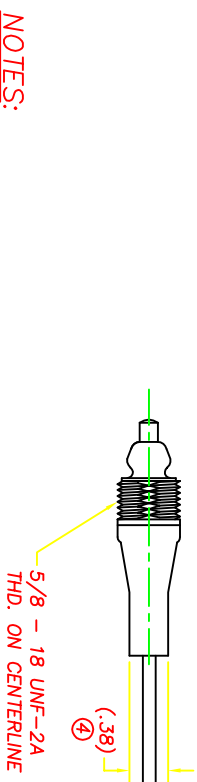
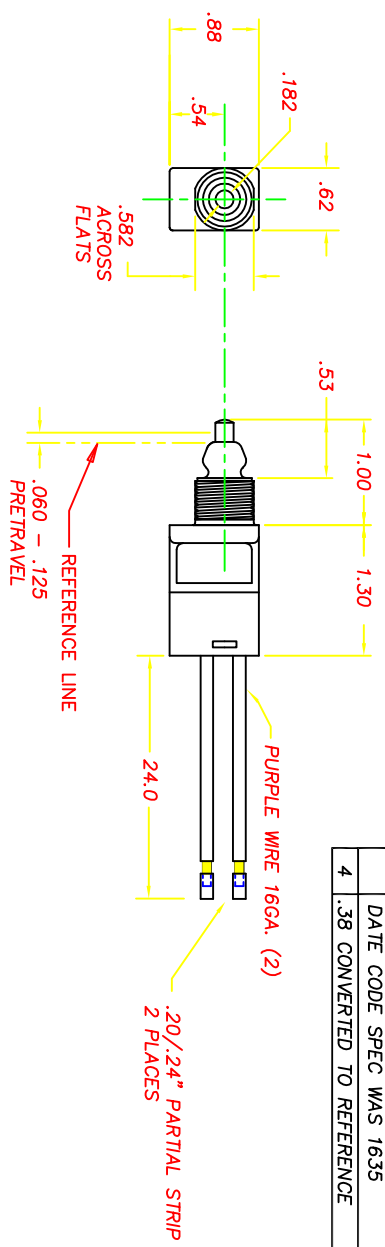


DWG. NO.	SHEET	REV.	COMPUTER GENERATED DRAWING - NO MANUAL CHANGES
----------	-------	------	--

REVISIONS			
X2	UPDATED TERMINAL INFORMATION	10/05/95	TW
~	RELEASE FROM EX. CR 762	12/21/95	TW
A	REVISED WIRE ASSEMBLY, CR 771	01/25/96	TW
B	ADDED DATE CODE NOTE	10/05/99	JH
C	PRETRAVEL WAS .100 NOM., CR 1889	01/31/12	CAK
4	DATE CODE SPEC WAS 1635		
	.38 CONVERTED TO REFERENCE	10/17/17	JW



- NOTES:**
- 1 - SWITCH HOUSING AND PLUNGER ARE CONSTRUCTED OF UV STABILIZED FUEL RESISTANT THERMOPLASTIC.
 - 2 - NORMALLY OPEN SWITCH, SPRING BIASED TO POSITION SHOWN.
 - 3 - DATE CODE ON HOUSING PER DSI SPEC. #1640.

DELTA SYSTEMS, INC. DOES NOT ASSUME ANY LIABILITY ARISING OUT OF THE MISAPPLICATION OF ANY PRODUCT	UNLESS OTHERWISE SPECIFIED DIMENSIONS ARE IN INCHES TOLERANCES ARE: FRACTIONAL DECIMAL ANGLES
DELTA SYSTEMS, INC. DOES NOT ASSUME ANY LIABILITY ARISING OUT OF THE MISAPPLICATION OF ANY PRODUCT	UNLESS OTHERWISE SPECIFIED DIMENSIONS ARE IN INCHES TOLERANCES ARE: FRACTIONAL DECIMAL ANGLES

DELTA SYSTEMS, INC. STREETSBORO, OHIO 44241	
DRAWN DATE LMM 09/19/95	CHECKED DATE TW 09/19/95
MATERIAL AS NOTED FINISH AS NOTED	
TITLE TETHER SWITCH, NORMALLY OPEN	
SIZE B SCALE FULL	DWG. NO. 7050-20 PROJECT NO. E-312 SHEET 1 OF 1