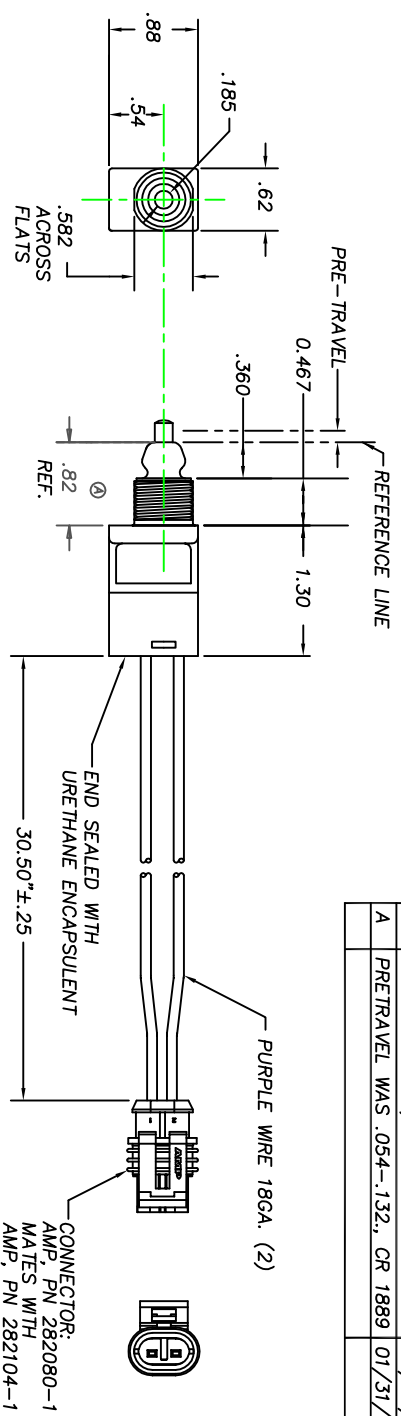
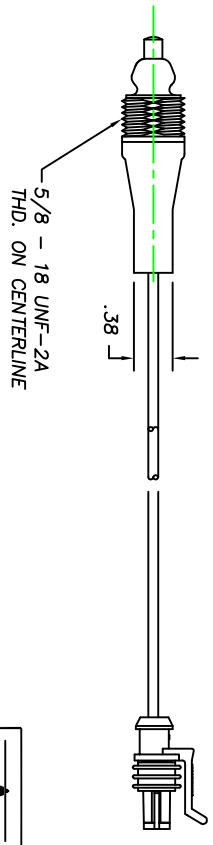


REVISIONS		
~	INITIAL RELEASE, CR 1810	08/20/09 CAK
A	PRETRAVEL WAS .054-.132, CR 1889	01/31/12 CAK



OPERATING CHARACTERISTICS AT REF. LINE:

REST = .168
 PRETRAVEL = .060 - .125 (A)



- NOTES:**
- 1 - SWITCH HOUSING AND PLUNGER ARE CONSTRUCTED OF CELCON
 - 2 - NORMALLY OPEN SWITCH, SPRING BIASED TO POSITION SHOWN.
 - 3 - DATE CODE PER DELTA SPEC 1640

DELTA SYSTEMS, INC. DOES NOT ASSUME ANY LIABILITY ARISING OUT OF THE MISAPPLICATION OF ANY PRODUCT		UNLESS OTHERWISE SPECIFIED DIMENSIONS ARE IN INCHES TOLERANCES ARE: .02 .005 .005 .1	
COMPUTER GENERATED DRAWING - NO MANUAL CHANGES ALLOWED	DO NOT SCALE DRAWING	DRAWN: CAK CHECKED: MEL DATE: 03/27/09 DATE: 06/22/09	FINISH: AS NOTED
DELTA SYSTEMS INC. STREETSBORO, OHIO 44241		TITLE: TETHER SWITCH, NORMALLY OPEN	
SIZE: B	DWG. NO: 7050-55	PROJECT NO:	REV: A
SCALE: FULL			