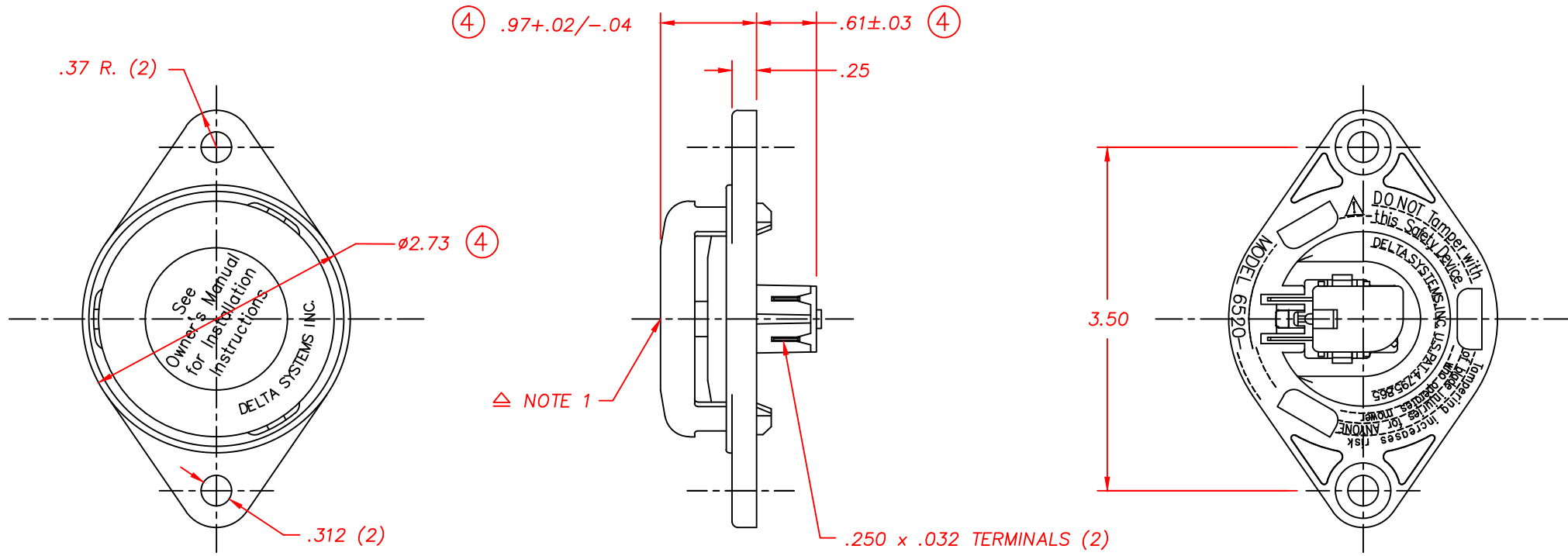


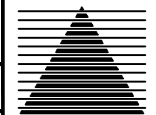
REVISIONS			
~	INITIAL RELEASE, CR 816	06/06/96	TW
A	REVISE INTERNAL CONTACT, CR915	02/06/97	TW
B	FRAME DESIGN CHANGE, CR1251	08/17/00	JH
C	REM. 2.74/2.72 CRIT. CHAR., CN1417	04/14/08	MA
4	2.73 WAS 2.74/2.72, CHANGED DELTON TM TO POLYPROPELENE		
	.97+.02/-0.04 WAS .98, .61±.03 WAS		
	.61, ECO 744	06/01/17	NMP



△ DESIGNATES CRITICAL CHARACTERISTICS

NOTES:

- △ 1-.040-.150 MOTION TO CLOSE CONTACTS.
- ④ 2-PLASTIC PARTS - POLYPROPELENE
TERMINALS - NICKEL PLATED BRASS.
- 3-DATE CODE INDICATING YEAR, MONTH, AND DAY OF MONTH MANUFACTURED STAMPED ON HOUSING.
- △ 4-INTEGRITY OF WELD & SWITCH FUNCTIONALITY TESTED AFTER ASSEMBLY.
- 5-DELTA IS RESPONSIBLE FOR COMPLIANCE TO THIS SPECIFICATION. THE FUNCTION AND ADEQUACY OF THE SAFETY "SYSTEM" IN WHICH THIS COMPONENT IS USED IS THE RESPONSIBILITY OF THOSE THAT DESIGN AND BUILD THE SYSTEM (INCLUDING BUT NOT LIMITED TO THE SEAT DESIGN, SWITCH LOCATION, FOAM DENSITY AND DESIGN).
- 6-THIS PRODUCT IS COVERED BY ONE OR MORE OF THE FOLLOWING U.S. PATENTS; 4,812,604; 4,795,865. OTHER PATENTS APPLIED FOR.
- 7-THIS MODEL IS A UL RECOGNIZED COMPONENT.
- 8-INTERNAL CONTACT IS BeCu.

DELTA SYSTEMS, INC. DOES NOT ASSUME ANY LIABILITY ARISING OUT OF THE MISAPPLICATION OF ANY PRODUCT		DRAWN LMM 05/24/96	DATE 05/24/96	 DELTA SYSTEMS INC. STREETSBORO, OHIO 44241
		CHECKED TW 06/06/96	DATE 06/06/96	
COMPUTER GENERATED DRAWING - NO MANUAL CHANGES ALLOWED		MATERIAL SEE NOTE 2		TITLE ROUND SEAT SWITCH NORMALLY OPEN
		FINISH GRAY/WHITE		SIZE C
UNLESS OTHERWISE SPECIFIED DIMENSIONS ARE IN INCHES TOLERANCES ARE: .XX± .02 .XXX± .005 ANG± 1° DO NOT SCALE DRAWING		SCALE FULL		DWG. NO. 6520-01FR
		PROJECT NO. E-311		REV 4