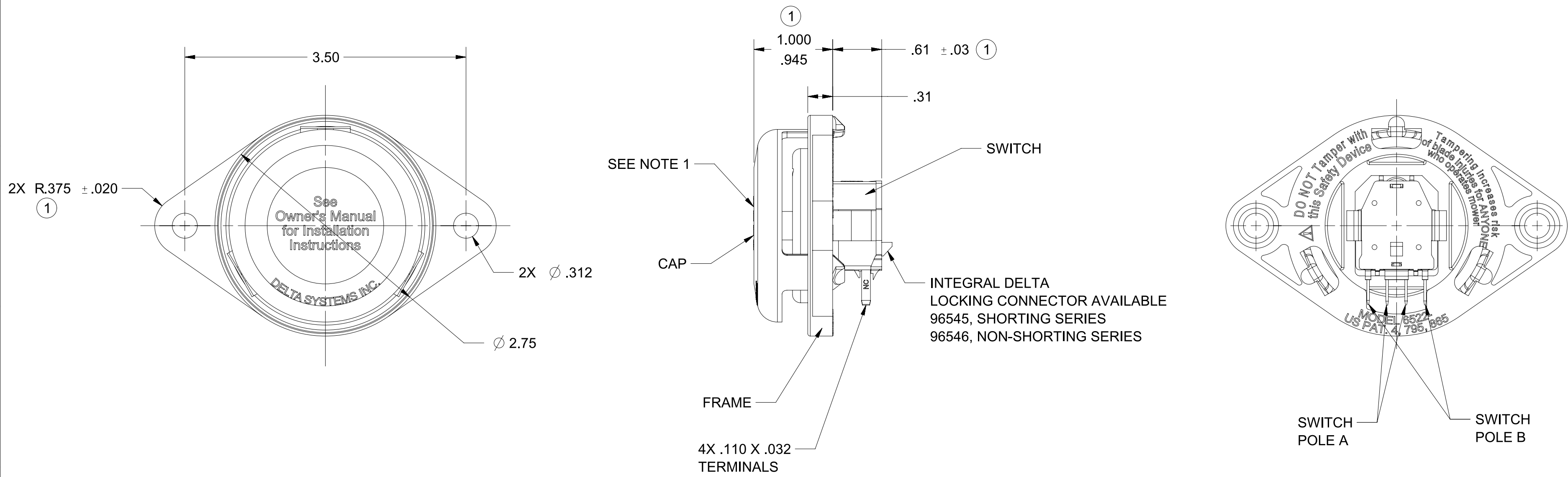


REVISIONS			
REV.	DESCRIPTION	DATE	INIT
~	INITIAL RELEASE, CR 1835	10/02/09	MEL
1	REDREW IN NX, ADDED ROHS NOTE, ADDED ASME NOTE, .375 ± .020 WAS .37, 1.000/.945 WAS .980, .61 ± .03 WAS .61, REPLACED DELTON WITH POLYPROPYLENE	06/01/17	NMP



NOTES

- 1) .040-.150 DEPRESSION REQUIRED FOR ELECTRICAL POLE CHANGE OF STATE.
- 2) PLASTIC MATERIAL: POLYPROPYLENE
TERMINALS: BRASS
- 3) DATE CODE INDICATING YEAR, MONTH, AND DAY OF MONTH MANUFACTURED STAMPED ON HOUSING.
- 4) FORCE TO DEPRESS CAP .250 IS 4.0 ± 1.0 LBS.
- 5) MATING TERMINAL IS PACKARD P/N 12034046 (18-20 GA WIRE) OR P/N 12066214 (14-16 GA WIRE)
- 6) DELTA IS RESPONSIBLE FOR COMPLIANCE TO THIS SPECIFICATION. THE FUNCTION AND ADEQUACY OF THE SAFETY "SYSTEM" IN WHICH THIS COMPONENT IS USED IS THE RESPONSIBILITY OF THE DESIGNER AND BUILDER OF THE SYSTEM (INCLUDING BUT NOT LIMITED TO THE SEAT DESIGN, SWITCH LOCATION, FOAM DENSITY AND DESIGN).
- 7) ASSEMBLY IS RoHS COMPLIANT.
- 8) INTERPRET THIS DRAWING ACCORDING WITH ASME Y14.5-2009.

PROPRIETARY & CONFIDENTIAL THE INFORMATION CONTAINED IN THIS DRAWING IS THE SOLE PROPERTY OF DELTA SYSTEMS. ANY REPRODUCTION IN PART OR AS A WHOLE WITHOUT THE WRITTEN PERMISSION OF DELTA SYSTEMS IS PROHIBITED.	UNLESS OTHERWISE SPECIFIED DIMENSIONS ARE IN INCHES TOLERANCES ARE: .X ± .1 .XX ± .02 .XXX ± .005 X° ± 1	DRAWN mlitedtke	DATE 17-Sep-2009	DELTA SYSTEMS 1734 FROST ROAD STREETSBORO, OHIO 44241 330-626-2811 WWW.DELTASYSTEMSINC.COM
		CHECKED dyoung	DATE 28-Oct-2009	
DELTA SYSTEMS INC. DOES NOT ASSUME ANY LIABILITY ARISING OUT OF THE MISAPPLICATION OF ANY PRODUCT	COMPUTER GENERATED DRAWING - NO MANUAL CHANGES ALLOWED	APPROVED ikirbaw	DATE 06-Jun-2017	TITLE NC/NC LOW PROFILE BOLT MOUNT SEAT SWITCH
		MATERIAL SEE NOTE 2	FINISH DO NOT SCALE DRAWING	PROJECTED VIEWS ARE 3RD ANGLE
		STATUS DS4_Design	DWG. NO. 6522-683_APP	SHEET 1 OF 1
				PROJECT NO. EX360
				REVISION 1