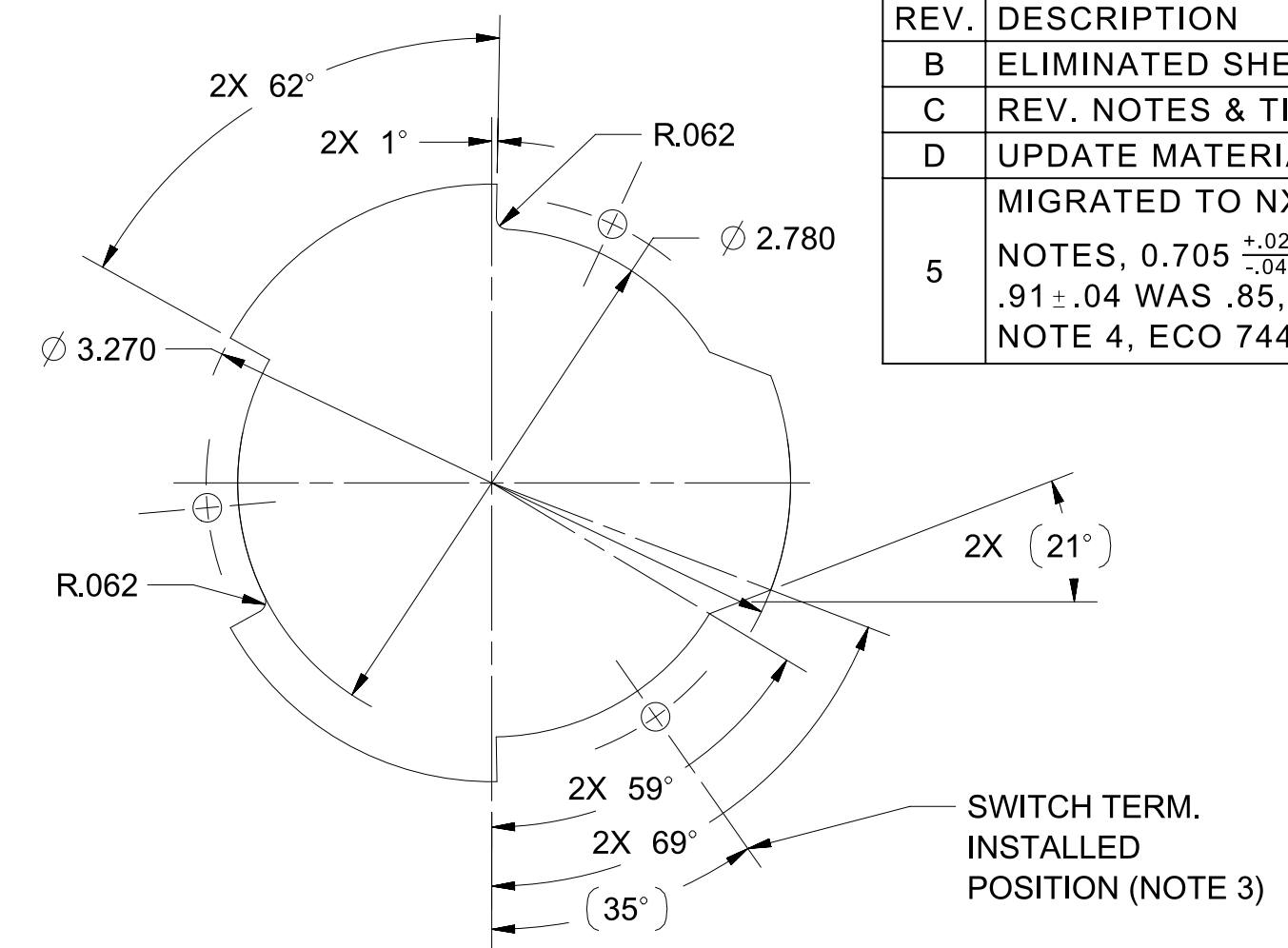
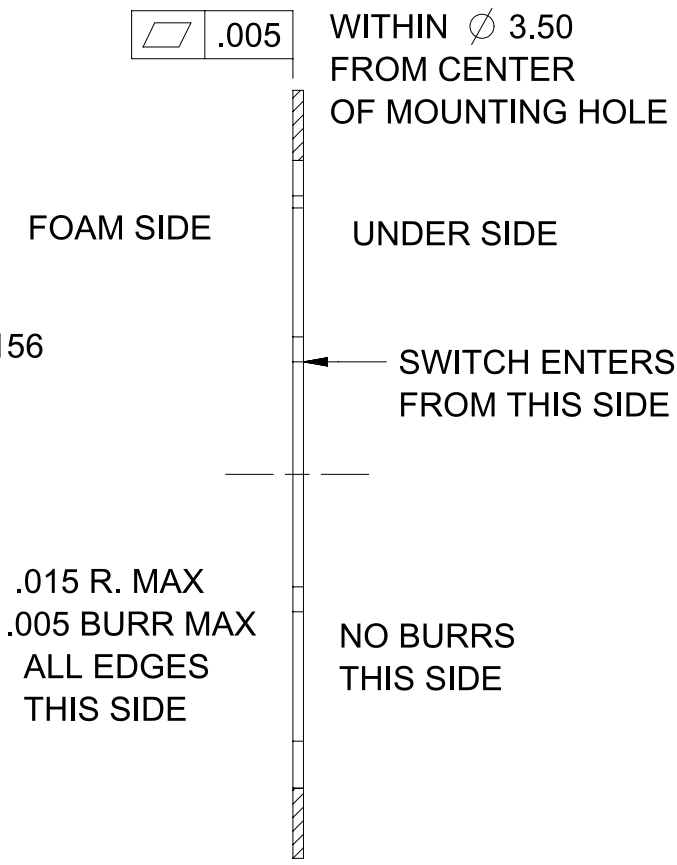
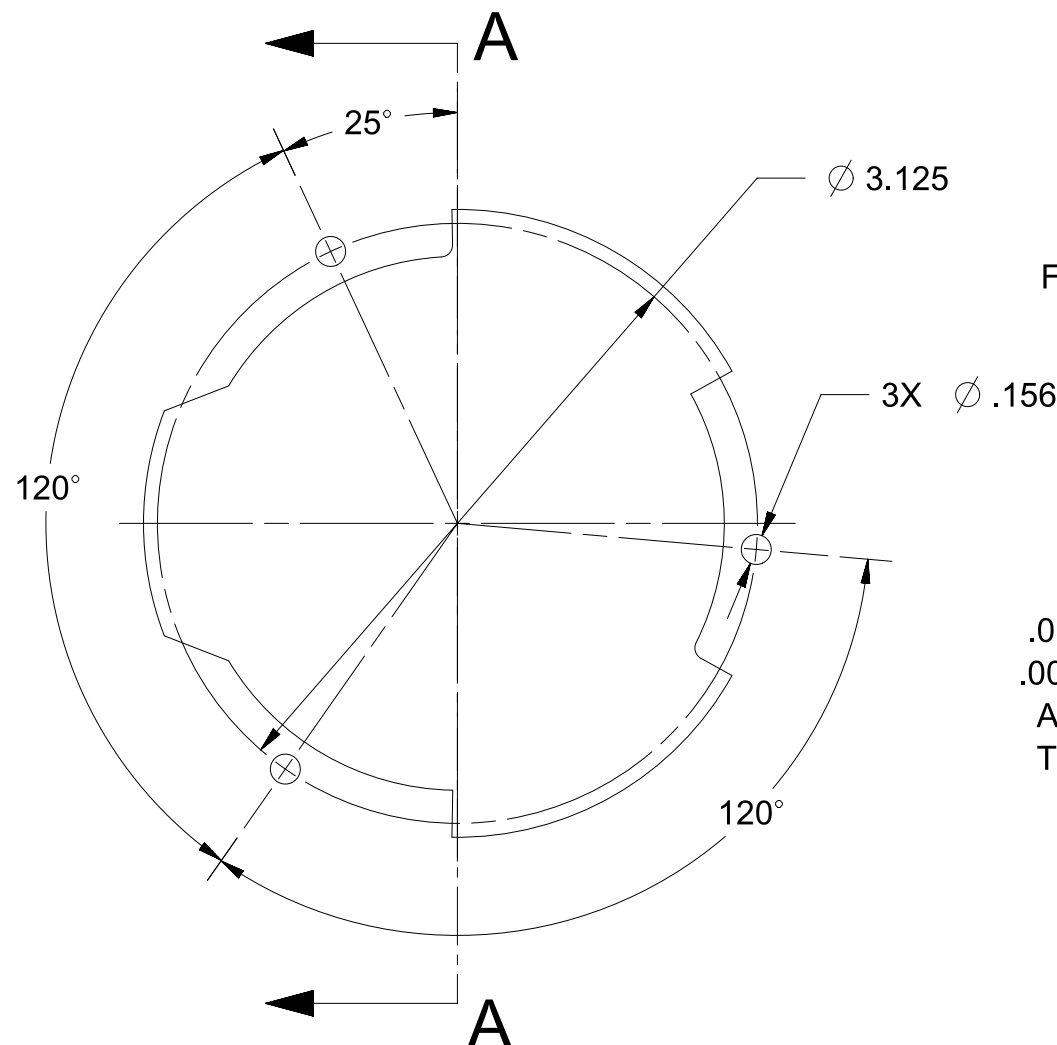


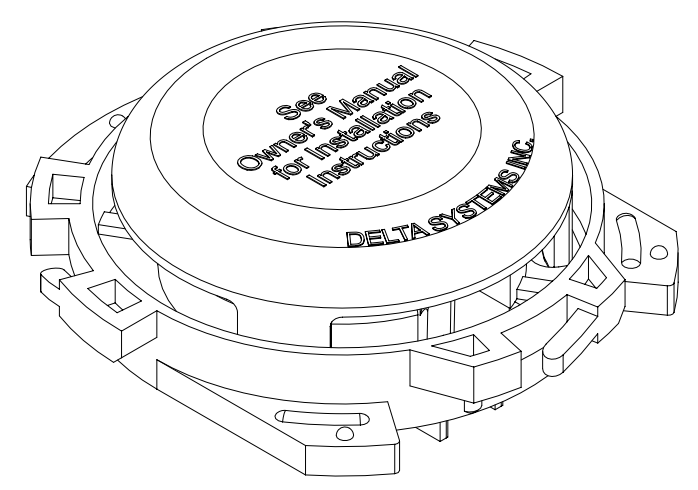
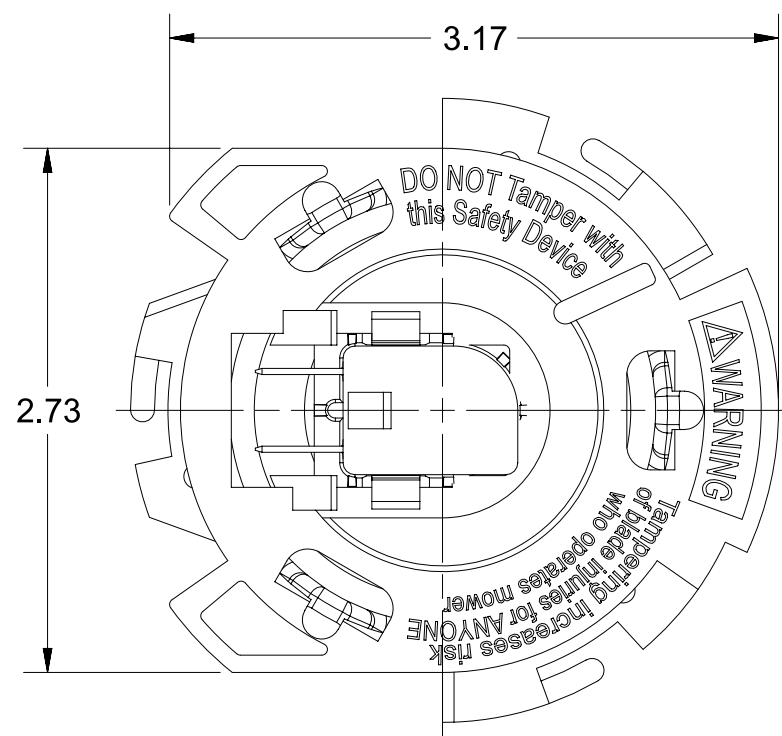
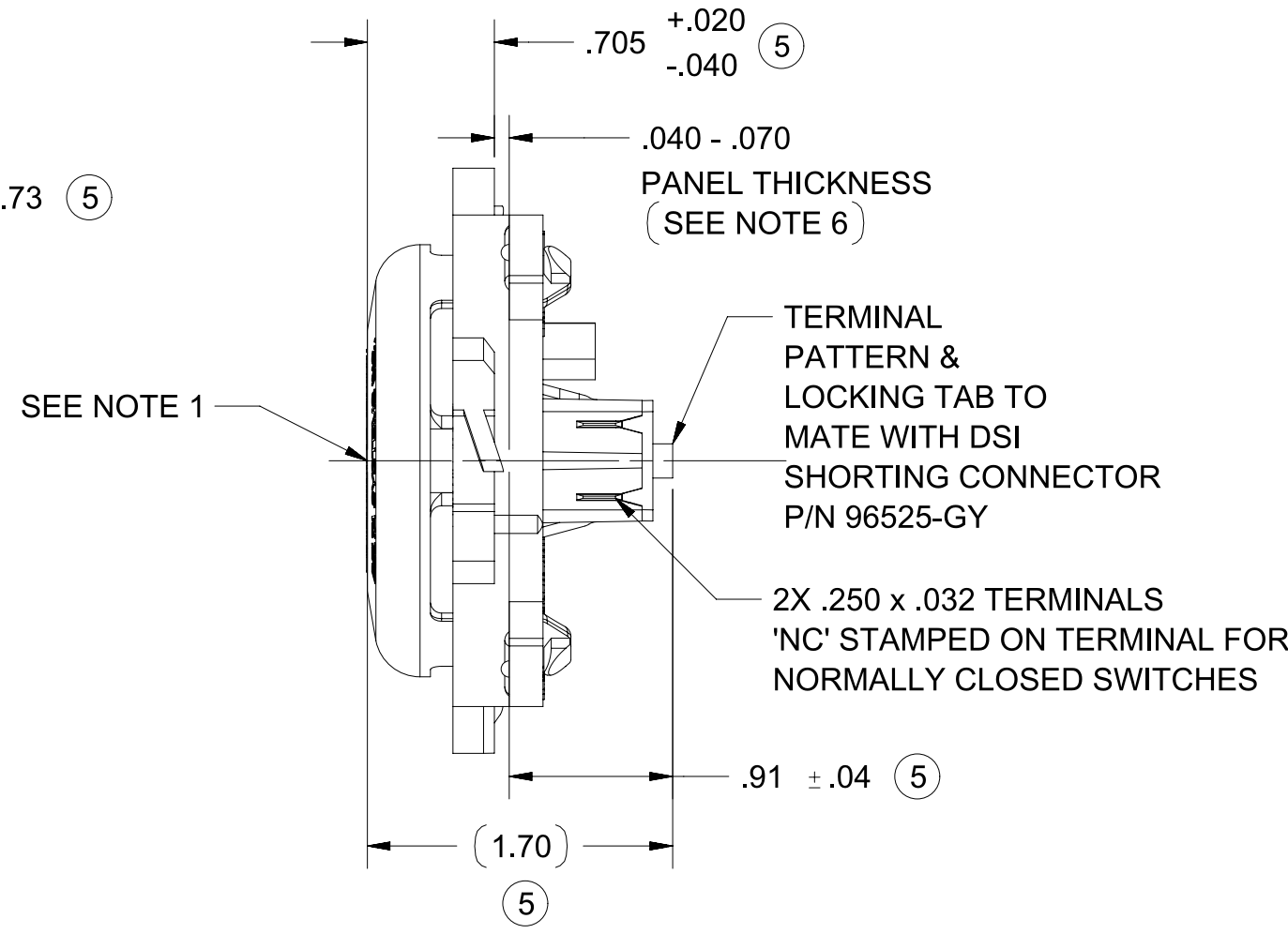
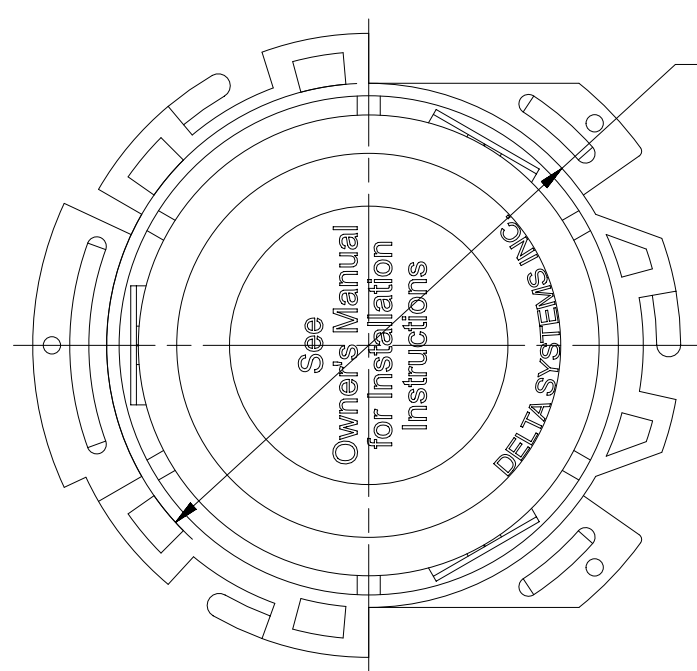
REVISIONS

REV.	DESCRIPTION	DATE	INIT
B	ELIMINATED SHEARING, CR 826	07/31/96	TW
C	REV. NOTES & TITLE BLOCK, CR 992	07/17/97	TW
D	UPDATE MATERIAL CR1908	07/21/10	ERB
5	MIGRATED TO NX, ADDED ASME & ROHS NOTES, 0.705 $\frac{+.020}{-.040}$ WAS 0.69, (1.70) WAS (1.62), .91 \pm .04 WAS .85, 2.73 WAS 2.74/2.72, UPDATED NOTE 4, ECO 744	04/18/17	PJC



SECTION A-A
RECOMENDED MOUNTING HOLE
(FOR REFERENCE ONLY)

MIGRATED TO NX, ADDED ASME & ROHS NOTES, 0.705 $\frac{+.020}{-.040}$ WAS 0.69,(1.70) WAS(1.62), .91 \pm .04 WAS .85, 2.73 WAS 2.74/2.72, UPDATED NOTE 4, ECO 744



NOTES

- .040-.150 MOTION TO MAKE OR BREAK CONTACTS.
- PLASTIC PARTS - POLYPROPYLENE
TERMINALS - NICKEL PLATED BRASS.
- SWITCH REQUIRES 55° CLOCKWISE ROATION TO LOCK IN PLACE (VIEWED FROM UNDERSIDE OF SEAT PAN).
- 4.0 \pm 1.5 LBS ACTUATION FORCE AT .30 DEPRESSION OF ACTUATOR CUP.
- PROPERLY INSTALLED SWITCH FRAME WILL SUPORT A STATIC LOAD OF 350 LBS. AT 60°F.
- THICKNESS INCLUDES PAINT AND/OR ANY OTHER LAYERS APPLIED BETWEEN SWITCH AND PANEL.
- DATE CODE INDICATING YEAR, MONTH,AND DAY OF MONTH MANUFACTURED STAMPED ON HOUSING.
- INTERGRITY OF WELD AND SWITCH FUNCTIONALITY TESTED AFTER ASSEMBLY.
- DELTA IS RESPONSIBLE FOR COMPLIANCE TO THIS SPECIFICATION. THE FUNCTION AND ADEQUACY OF THE SAFETY "SYSTEM" FOR WHICH THIS COMPONENT IS USED IS THE RESPONSIBILITY OF THOSE THAT DESIGN AND BUILD THE SYSTEM (INCULDING BUT NOT LIMITED TO THE SEAT DESIGN, SWITCH LOCATION, FOAM DENSITY AND DESIGN).
- THIS PRODUCT COVERED BY THE FOLLOWING U.S. PATENT; 5,424,502.
- INTERPRET THIS DRAWING ACCORDING WITH ASME Y14.5-2009.
- PRODUCT IS IN COMPLIANCE WITH DIRECTIVE 2011/65/EU OF THE EUROPEAN PARLIAMENT AND THE COUNCIL OF 8 JUNE 2011 ON THE RESTRICTION OF THE USE OF CERTAIN HAZARDOUS SUBSTANCES IN ELECTRICAL AND ELECTRONIC EQUIPMENT (ROHS DIRECTIVE)

PROPRIETARY & CONFIDENTIAL THE INFORMATION CONTAINED IN THIS DRAWING IS THE SOLE PROPERTY OF DELTA SYSTEMS. ANY REPRODUCTION IN PART OR AS A WHOLE WITHOUT THE WRITTEN PERMISSION OF DELTA SYSTEMS IS PROHIBITED.	UNLESS OTHERWISE SPECIFIED DIMENSIONS ARE IN INCHES TOLERANCES ARE: .X \pm .1 .XX \pm .02 .XXX \pm .005 X \pm 1	DRAWN Imm	DATE 16-Jan-1995	DELTA SYSTEMS 1734 FROST ROAD STREETSBORO, OHIO 44241 330-626-2811 WWW.DELTASYSTEMSINC.COM
		CHECKED twilliams	DATE 17-Jan-1995	
DELTA SYSTEMS INC. DOES NOT ASSUME ANY LIABILITY ARISING OUT OF THE MISAPPLICATION OF ANY PRODUCT	COMPUTER GENERATED DRAWING - NO MANUAL CHANGES ALLOWED	APPROVED ikirbaw	DATE 09-May-2017	TITLE NC Quick Mount Seat Switch Assembly
		MATERIAL SEE NOTE 2	FINISH GRAY	
DO NOT SCALE DRAWING		STATUS DS4_Concept	PROJECTED VIEWS ARE 3RD ANGLE	SCALE C
		SHEET 1 OF 1	PROJECT NO. EX311	REVISION 5