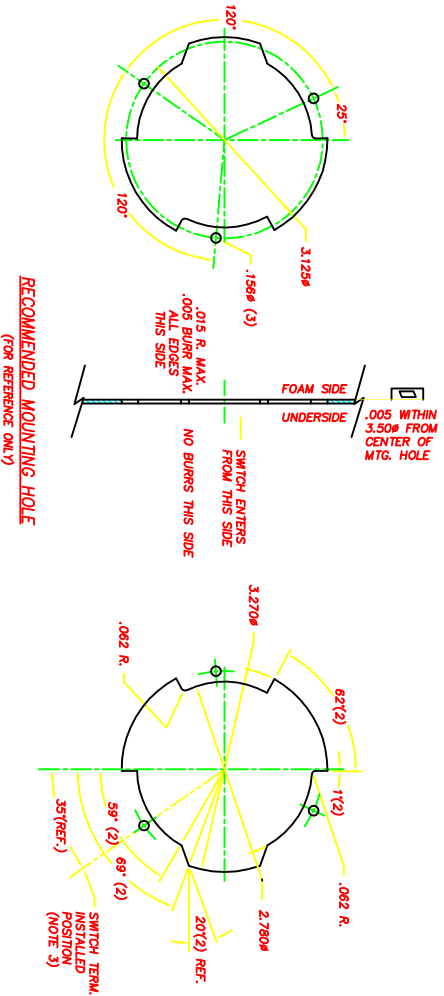
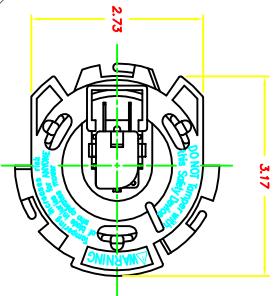
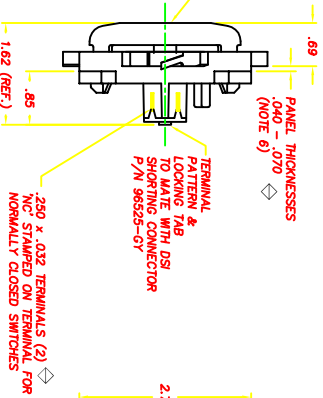
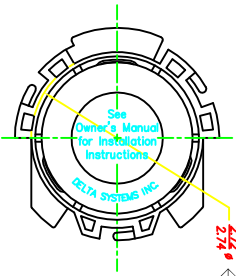


REVISIONS	
~	INITIAL RELEASE CR 11278
A	UPDATE MATERIAL CR1909
	04/16/98 JH
	07/27/10 EHB



RECOMMENDED MOUNTING HOLE
(FOR REFERENCE ONLY)



NOTES:

- 1-040-150 MOTION TO MAKE OR BREAK CONTACTS.
- 2-PLASTIC PARTS - POLYPROPYLENE BRASS.
- 3-TERMINALS - NICKEL PLATED BRASS.
- 4-SWITCH IS OMAK ACTUATOR CAP & FRAME ARE BLACK.
- 5-SWITCH IS OMAK ACTUATOR CAP & FRAME ARE BLACK.
- 6-PROPERLY INSTALLED SWITCH FRAME WILL SUPPORT A STATIC LOAD OF 350 LBS. AT 60°.
- 7-THICKNESS INCLUDES PAINT AND/OR ANY OTHER LAYERS APPLIED BETWEEN SWITCH AND PANEL.
- 8-DATE CODE INDICATING YEAR, MONTH, AND DAY OF MONTH MANUFACTURED STAMPED ON HOUSING.
- 9-INTERITY OF WELD & SWITCH FUNCTIONALITY TESTED AFTER ASSEMBLY.
- 10-DELTA IS RESPONSIBLE FOR COMPLIANCE TO THIS SPECIFICATION. THE FUNCTION AND ADEQUACY OF THE SWITCH SYSTEM WHICH THIS COMPONENT IS USED IS THE RESPONSIBILITY OF THOSE THAT DESIGN AND MANUFACTURE THE SYSTEM.
- 11-THIS PRODUCT COVERED BY THE FOLLOWING U.S. PATENT: 5,424,902.

DELTA SYSTEMS, INC. DOES NOT ASSUME ANY LIABILITY ARISING OUT OF THE MISAPPLICATION OF ANY PRODUCT		DATE	BY
COMPUTER GENERATED DRAWING - NO MANUAL CHANGES ALLOWED		04/16/98	JH
DO NOT SCALE DRAWING		04/16/98	JH
REVISIONS		07/27/10	EHB
N.C. TWIST LOCK MOUNT SEAT SWITCH		06500-56	REV 3
DELTA SYSTEMS, INC. STREETSBORO, OHIO 44441		6500-56	REV 3