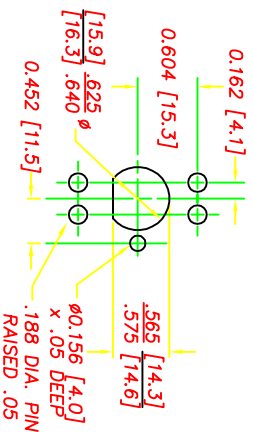
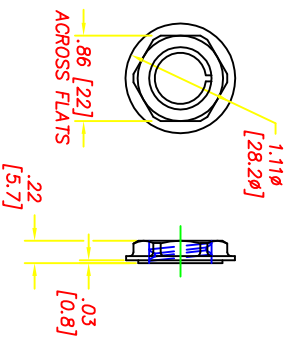


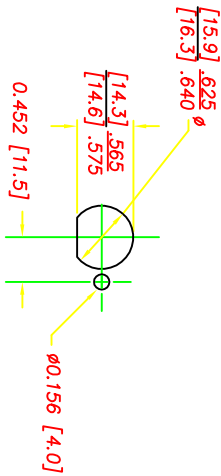
USE 2 REACTION PINS, TOP OR BOTTOM



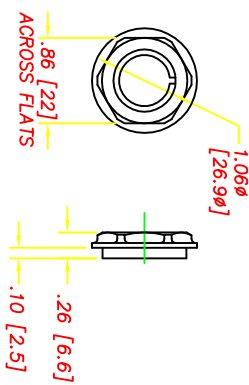
**RECOMMENDED PLASTIC PANEL**  
MOUNTING HOLE  
(VIEW FROM BACK OF PANEL)



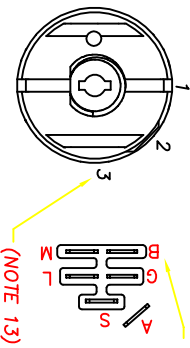
**NUT DETAILS**  
(DSI P/N 9256)  
PANEL THICKNESS RANGE .07 TO .19



**RECOMMENDED METAL PANEL**  
MOUNTING HOLE  
(VIEW FROM BACK OF PANEL)



**NUT DETAILS**  
(DSI# 9252)  
MATES WITH ACCURATE MOLD & DIE CO. BEZEL# 121  
PANEL THICKNESS RANGE .05 TO .17



POSITION	ROTATION	FUNCTION	CONTACT
1	0°	OFF	M+G
2	45°	ON	B+L+A
3	85°	START	B+L+S

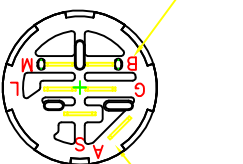
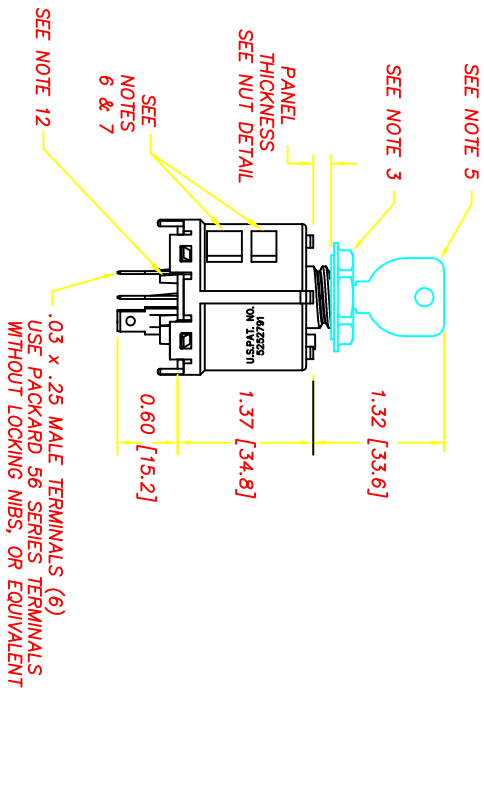
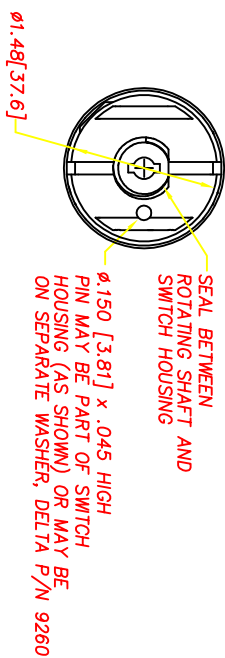
(NOTE 11)

**NOTES**

- 1-DIM. 'S' IN BRACKET [ ] ARE IN MILLIMETERS; MILLIMETER TOLERANCES ARE .XX .5. .XXX .15.
- 2-PLASTIC PARTS ARE POLYPROPYLENE (BLACK). TERMINALS ARE BRONZE.
- 3-7/8 HEX NUT IS SHIPPED SEPARATELY.
- 4-RECOMMENDED ASSEMBLY TORQUE IS 26 IN.-LBS TO 36 IN.-LBS. AUTOMATIC SHUTOFF TORQUE SCREWDRIVER MAXIMUM SPEED IS 300 RPM.
- 5-KEY IS SHIPPED SEPARATELY. MAXIMUM TORQUE FOR KEY IS 20 IN LBS. USE DELTA KEY ONLY. DELTA STEEL KEY PART# 6885-STD.
- 6-SWITCH STYLE STAMPED ON HOUSING.
- 7-DATE CODE INDICATING YEAR, MONTH, AND DAY OF MONTH MANUFACTURED STAMPED ON HOUSING.
- 8-SWITCH ELECTRICAL FUNCTIONALITY TESTED AFTER ASSEMBLY.
- 9-ELECTRICAL RATING, CONTINUOUS: 20A @ 12-14 VDC.  
ELECTRICAL LIFE: 5K CYCLES @ 10 AMPS INDUCTIVE.  
10K CYCLES @ 5 AMPS INDUCTIVE.  
50K CYCLES @ 5 AMPS RESISTIVE.
- 10-THIS PRODUCT COVERED BY THE FOLLOWING U.S. PATENT: 5,252,791. OTHER PATENTS APPLIED FOR.
- 11-SWITCH SHOULD NEVER BE MOUNTED IN PANEL WITH THE "B" TERMINAL DIRECTLY ABOVE THE "G" TERMINAL, RELATIVE TO GRAVITY.
- 12-PULL FORCE TO DISLOCATE BACK COVER IS 80 LBS. MINIMUM.
- 13-POSITION 3 IS MOMENTARY.
- 14-ALL OTHER CONTACT COMBINATIONS ARE NOT ALLOWED.

**REVISIONS**

REV	DESCRIPTION	DATE	BY
C	REVISED BACK COVER, CR 1046	9/17/97	JH
D	ADDED CONNECTOR STOP, CR1215	12/11/98	JH
E	REW'D CORE IN BACKCOVER, CR 1306	06/04/99	JH
F	UPDATED NOTE, MATERIAL IS BRONZE	7/13/99	ML
G	ADDED TAPER PER CR1334	9/9/99	JH
H	DEFINED CRITICAL CHARACTERISTICS	05/08/00	JH
J	DIM .62 [15.7] TO .60 [15.2], CN0554	09/09/02	JG
K	REMOVE CRITICAL DIM., CR 1477	06/02/03	JH
L	UPDATE MATERIAL CR1938	01/03/11	ERB



TERMINAL PATTERN TO MATE WITH PACKARD 5-WAY CONNECTOR P/N 2973422, OR EQUIVALENT

COMPUTER GENERATED DRAWING - NO MANUAL CHANGES ALLOWED		UNLESS OTHERWISE SPECIFIED DIMENSIONS ARE IN INCHES AND TOLERANCES ARE:	
.XXX	.02	.XXX	.005 ANG 1°
DO NOT SCALE DRAWING		SEE NOTE 2	
DELTA SYSTEMS, INC. DOES NOT ASSUME ANY LIABILITY ARISING OUT OF THE MISAPPLICATION OF ANY PRODUCT			
DRAWN		DATE	
MR		11/18/96	
CHECKED		DATE	
TW		11/22/96	
MATERIAL SEE NOTE 2			
FINISH SEE NOTE 2			
SIZE		DIM. NO.	
C		6850-36	
SCALE		PROJECT NO.	
FULL		EX311	
		REV	
		L	

DELTA SYSTEMS INC.  
STREETSBORO, OHIO 44241

IGNITION SWITCH  
3 - POSITION