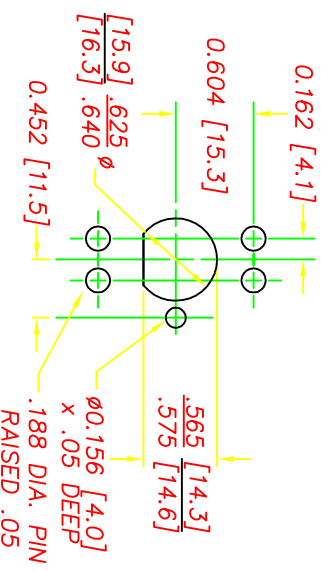
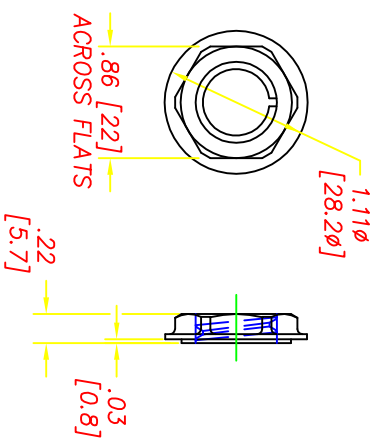


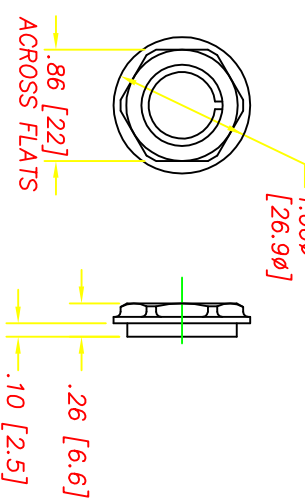
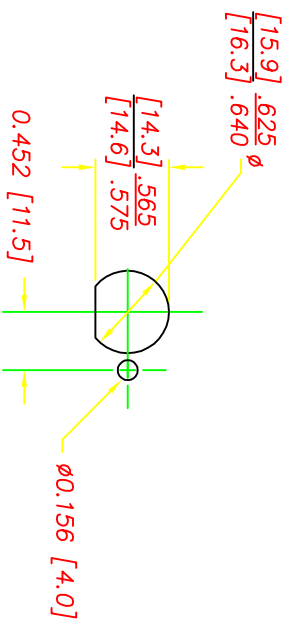
USE 2 REACTION PINS, TOP OR BOTTOM



RECOMMENDED PLASTIC PANEL MOUNTING HOLE
(VIEW FROM BACK OF PANEL)

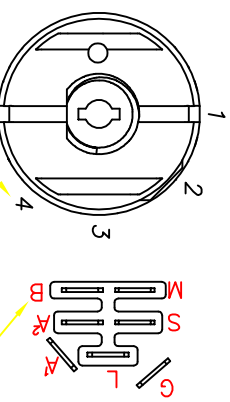


NUT DETAILS
(DSI P/N 9256)
PANEL THICKNESS RANGE .07 TO .19



NUT DETAILS
(DSI# 9252)
MATES WITH ACCURATE MOLD & DIE CO. BEZEL# 121
PANEL THICKNESS RANGE .05 TO .17

RECOMMENDED METAL PANEL MOUNTING HOLE
(VIEW FROM BACK OF PANEL)



POSITION	ROTATION	FUNCTION	CONTACT 1	CONTACT 2
1	0°	OFF	M+G+A ¹	~
2	45°	RUN1	B+A ¹	L+A ³
3	95°	RUN2	B+A ¹	~
4	135°	START	B+S+A ¹	~

(NOTE 13)

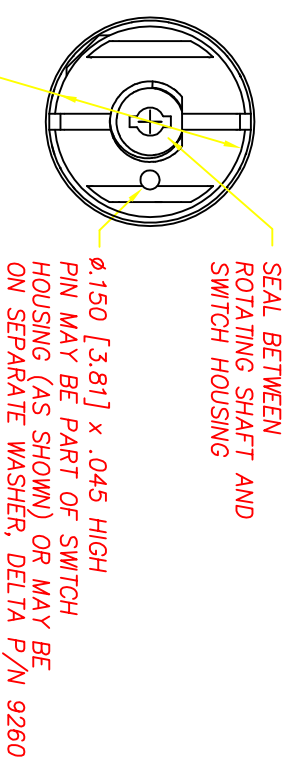
(NOTE 11)

NOTES

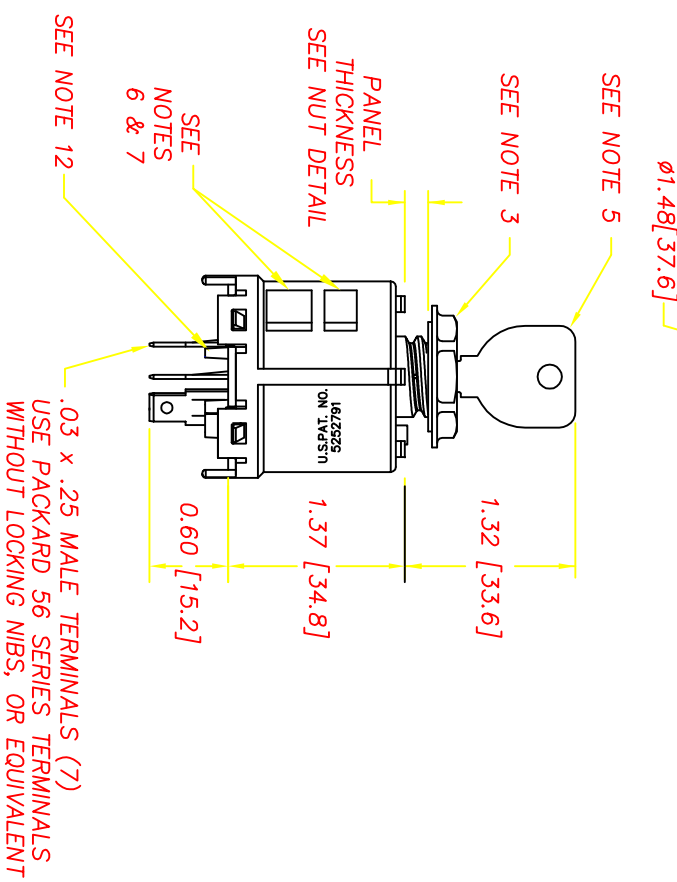
- 1-DIM'S IN BRACKET [] ARE IN MILLIMETERS; MILLIMETER TOLERANCES ARE .XX ± .15.
- 2-PLASTIC PARTS ARE POLYPROPYLENE (BLACK HOUSING, GRAY BACK COVER). TERMINALS ARE BRONZE.
- 3-7/8 HEX NUT IS SHIPPED SEPARATELY.
- 4-RECOMMENDED ASSEMBLY TORQUE IS 26 IN-LBS TO 36 IN-LBS. AUTOMATIC SHUTOFF TORQUE SCREWDRIVER MAXIMUM SPEED IS 300 RPM.
- 5-KEY IS SHIPPED SEPARATELY. MAXIMUM TORQUE FOR KEY IS 20 IN LBS. USE DELTA KEY ONLY. DELTA STEEL KEY PART# 688S-STD.
- 6-SWITCH STYLE STAMPED ON HOUSING.
- 7-DATE CODE INDICATING YEAR, MONTH, AND DAY OF MONTH MANUFACTURED STAMPED ON HOUSING.
- 8-SWITCH ELECTRICAL FUNCTIONALITY TESTED AFTER ASSEMBLY.
- 9-ELECTRICAL RATING, CONTINUOUS: 20A @ 12-14 VDC.
ELECTRICAL LIFE: 5K CYCLES @ 10 AMPS INDUCTIVE.
10K CYCLES @ 5 AMPS RESISTIVE.
- 10-THIS PRODUCT COVERED BY THE FOLLOWING U.S. PATENT: 5,252,791. OTHER PATENTS APPLIED FOR.
- 11-SWITCH SHOULD NEVER BE MOUNTED IN PANEL WITH THE "B" TERMINAL DIRECTLY ABOVE THE "G" TERMINAL, RELATIVE TO GRAVITY.
- 12-PULL FORCE TO DISLOCATE BACK COVER IS 80 LBS. MINIMUM.
- 13-POSITION 4 IS MOMENTARY.
- 14-ALL OTHER CONTACT COMBINATIONS ARE NOT ALLOWED.

REVISIONS

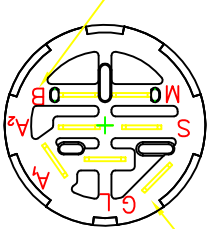
REV	DESCRIPTION	DATE	BY
B	REVISED BACK COVER, CR 1018	08/15/97	TW
C	REVISED BACK COVER, CR 1046	9/17/97	JH
D	ADDED CONNECTOR STOP, CR1215	12/11/98	JH
E	REM'D CORE IN BACKCOVER, CR 1306	06/04/99	JH
F	UPDATED NOTE, MATERIAL IS BRONZE	7/13/99	ML
G	ADDED TAPER PER CR1334	9/9/99	JH
H	DEFINED CRITICAL CHARACTERISTICS	05/08/00	JH
I	BACK COVER COLOR CHANGE, CR1384	09/11/00	JH
J	DIM .62 [15.7] TO .60 [15.2], CN0554	09/09/02	JG
K	REMOVE CRITICAL DIM., CR 1477	06/02/03	JH
L	UPDATE MATERIAL CR1938	01/03/11	ERB



SEAL BETWEEN ROTATING SHAFT AND SWITCH HOUSING
Ø1.150 [3.81] x .045 HIGH
PIN MAY BE PART OF SWITCH HOUSING (AS SHOWN) OR MAY BE ON SEPARATE WASHER, DELTA P/N 9260



SEE NOTE 5
SEE NOTE 3
SEE NOTE 12
SEE NOTE 6 & 7
SEE NOTE 11
PANEL THICKNESS
SEE NUT DETAIL
SEE NOTE 12
.03 x .25 MALE TERMINALS (7)
USE PACKARD 56 SERIES TERMINALS WITHOUT LOCKING NIBS, OR EQUIVALENT



TERMINAL PATTERN TO MATE WITH DSI CONNECTOR, #972311

DELTA SYSTEMS, INC. DOES NOT ASSUME ANY LIABILITY ARISING OUT OF THE MISAPPLICATION OF ANY PRODUCT		UNLESS OTHERWISE SPECIFIED DIMENSIONS ARE IN INCHES TOLERANCES ARE .XX ± .02 .XXX ± .005 ANGE 1°		COMPUTER GENERATED DRAWING - NO MANUAL CHANGES ALLOWED	
DRAWN	DATE	CHECKED	DATE	MATERIAL SEE NOTE 2	
BAP	10/04/96	TW	11/04/96	FINISH SEE NOTE 2	
TITLE IGNITION SWITCH 4 - POSITION		SIZE C		DWG. NO. 6850-47	
SYSTEMS INC. STREETSBORO, OHIO 44241		SCALE FULL		PROJECT NO. EX311	
				REV L	