

MINI PLUNGER SWITCHES

Model Series 7050/7081



- Mounting Type- Screw or bolt mount
- Easy to design into your application
- One or two independent electrical circuits
- Wiping contact prevent carbon buildup and increased life
- RoHS, REACH and Conflict Mineral compliant as noted*

OPERATION

Delta Systems' Mini Plunger Switches are a universal plunger switch is designed to be used in low voltage, low current applications. Dual O-ring construction on the plunger shaft and complete encapsulation at the wire lead exit enables this switch to withstand water submersion to depths of 3 meters, (10 feet). It also employs self-cleaning wiping contacts, and has excellent vibration resistance.

ELECTRICAL SPECIFICATIONS

Current Rating @ 12-14V (A)
 Operating Current: 3 Amps
 Contact Resistance @ Rated Load 50mΩ
 Life @ Rated Load = 100,000 cycles
 Operating Temperature Range: -8 °C to 85 °C

ENVIRONMENTAL RATINGS

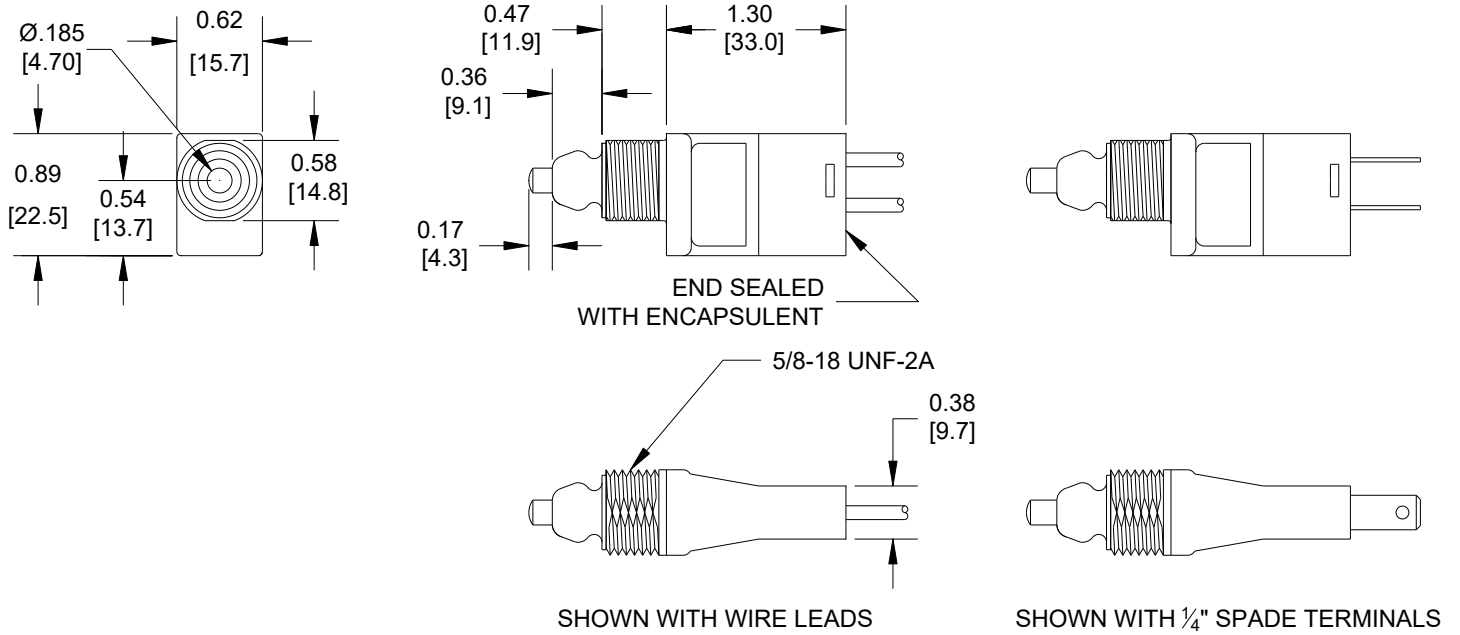
Exposure	Specification
Ingress Protection	IEC 60529, IP67
Salt Fog	EP455 – 5.9
Vibration	EP455 – 5.15.2
Chemical Resistance	EP455 – 5.8 Brush, Kerosene, Motor oil, Antifreeze, GOJO® hand cleaner, Tap water, Gasoline, Ammoniated glass cleaner, Engine cleaner, WD-40, Evinrude Anti-Corrosion Spray P/N 777193

AVAILABLE CONFIGURATIONS

Part number	Contact Config	Mounting Type	Connections	Pre-Travel	IP67
7050-11	NC	Nut Mount	Wire Leads	.060-.125	Yes
7050-15	NC	Nut Mount	(2) Integral 1/4" Spade Terminals	.095-.155	No
7050-16	NO	Nut Mount	(2) Integral 1/4" Spade Terminals	.060-.125	Yes
7050-19	NC	Nut Mount	(2) 24" Stripped Leads	.095-.155	Yes
7050-20	NO	Nut Mount	(2) 24" Stripped Leads	.060-.125	Yes
7050-23	NC	Nut Mount	(2) 24" Leads /w 1/4" Spade Terminals	.095-.155	Yes
7050-24	NC	Nut Mount	Wire Lead with Connector	.095-.155	No
7050-51	NC	Nut Mount	(2) 4" Stripped Leads	.095-.155	No
7050-51PKG	NC	Nut Mount	(2) 4" Stripped Leads	.095-.155	Yes
7050-54	NO	Nut Mount	(2) 24" Leads /w 1/4" Spade Terminals	.060-.125	Yes
7050-55	NO	Nut Mount	30.5" Integral Harness, TE Connectivity 282080-1 Connector	.060-.125	No
7081-03	NO	Screw Mount	(2) 23.25" Stripped Leads	.005-.140	Yes
7081-16	NO	Screw Mount	(1) 27" Stripped Lead, (1) 11" Stripped Lead	.005-.140	Yes
7081-17	NO	Screw Mount	(1) 21.5" Stripped Lead, (1) 22" Stripped Lead	.005-.140	Yes
7081-21	NO	Screw Mount	(2) 9.5" Stripped Leads	.005-.140	No
7081-24A	NC	Screw Mount	31.5" Integral Harness, (2) Deutsch 1062-16-0122 Terminals	.005-.140	Yes
7081-25	NO	Screw Mount	6" Integral Harness, Delphi 12010973 Connector	.005-.140	Yes
7081-26	NO	Screw Mount	(1) 39" Stripped Lead, (1) 37" Stripped Lead	.005-.140	Yes
7081-29	NC	Screw Mount	6" Integral Harness, Delphi 12015792 Connector	.005-.140	Yes
7081-31	NC	Screw Mount	40.5" Integral Harness, (2) TE Connectivity 282109-1 Terminals	.005-.140	Yes
7081-34	NC	Screw Mount	(2) 9.5" Stripped Leads	.005-.140	No
7081-36	NO	Screw Mount	(2) 9.5" Stripped Leads	.005-.140	Yes
7081-37	NO	Screw Mount	10.4" Integral Harness, TE Connectivity 282080-1 Connector	.005-.140	Yes
7081-38	NC	Screw Mount, Dual Slots	(2) 9.5" Stripped Leads	.005-.140	Yes
7081-39	NO	Screw Mount, Dual Slots	(2) 9.5" Stripped Leads	.005-.140	Yes
7081-46	NC	Screw Mount	6.2" Integral Harness, Delphi 08900826 Connector	.005-.140	Yes
7081-47	NO	Screw Mount	3.6" Integral Harness, Delphi 08900826 Connector	.005-.140	Yes

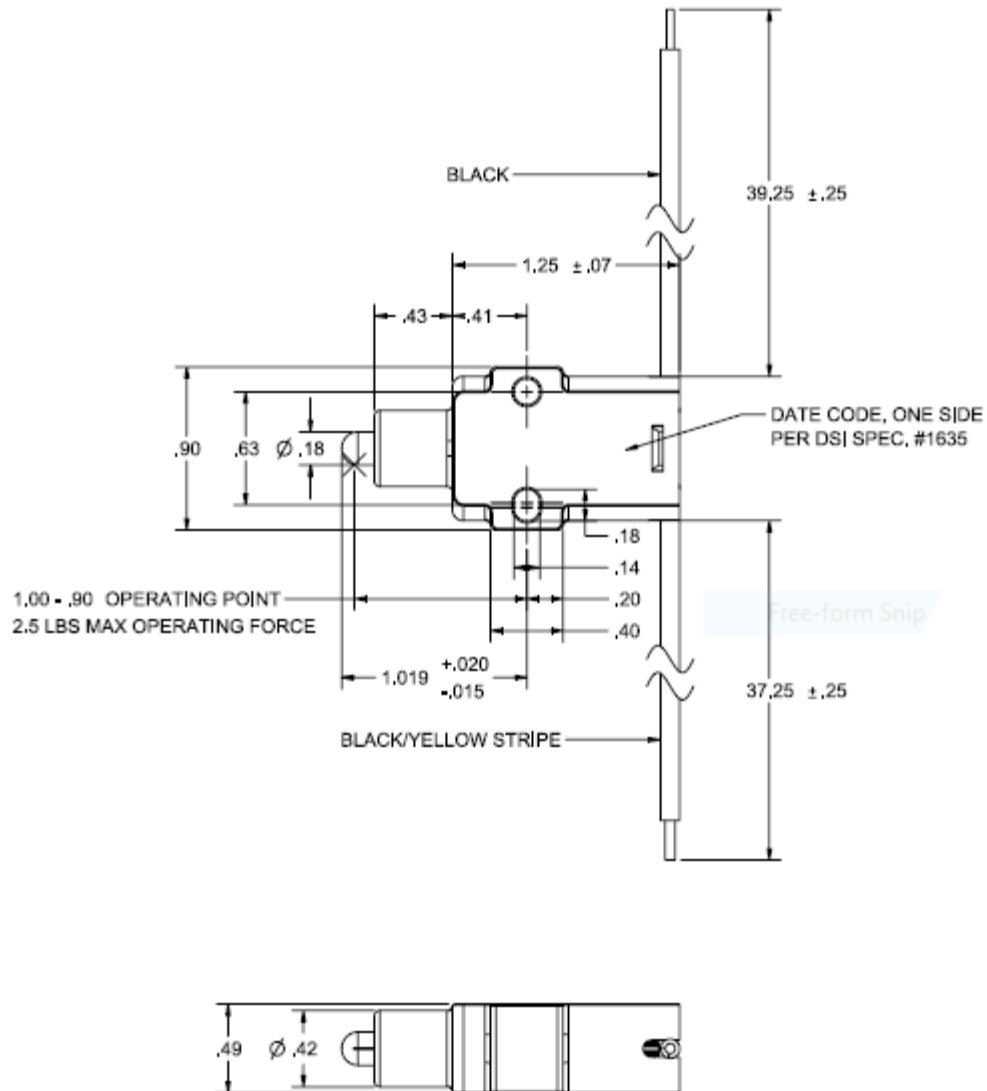
DIMENSIONS (7050 Series)

Note: For specific Part information please refer to the Application print.



MOUNTING (7050 Series)

Switch body has 5/8"-18 threads to be mounted through a round or keyed 'D' or double 'D' hole in a panel .05 to .18 thick. Plastic nuts are available (see Accessories section). Recommended maximum torque using the Delta nut is 35 in-lbs.

DIMENSIONS (7081 Series)

MOUNTING (7081 Series)

Type: Preferred mounting method: Two #6 machine screws spaced 0.63" apart.