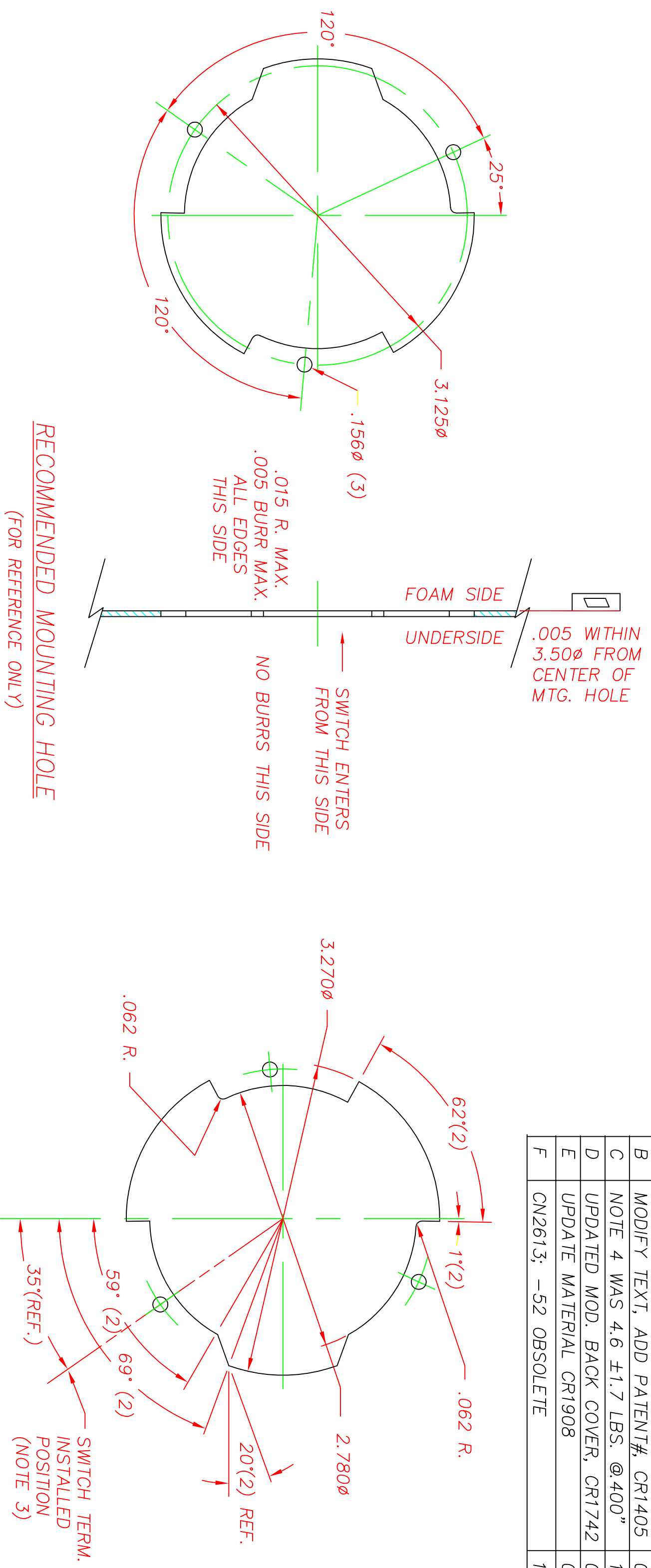
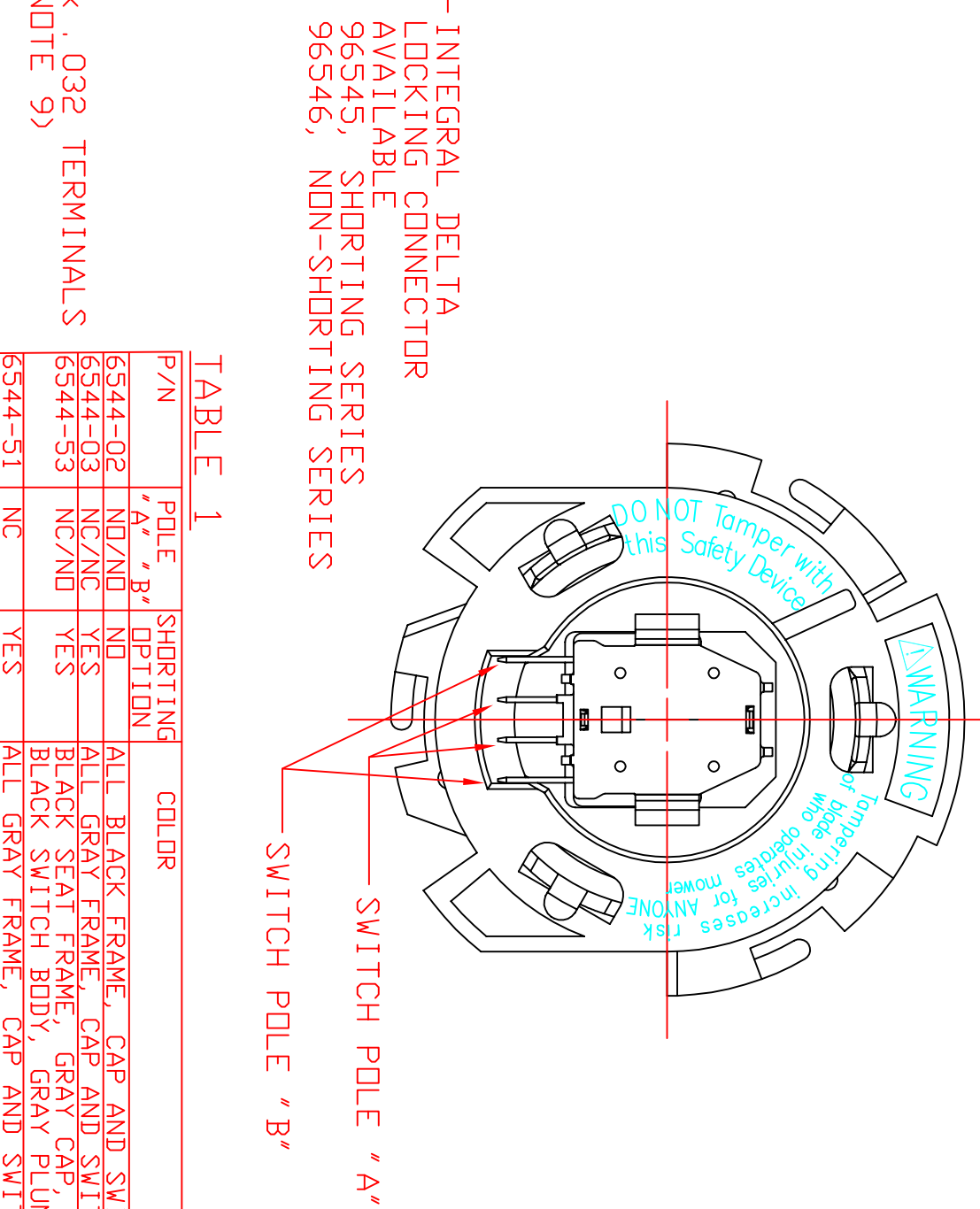
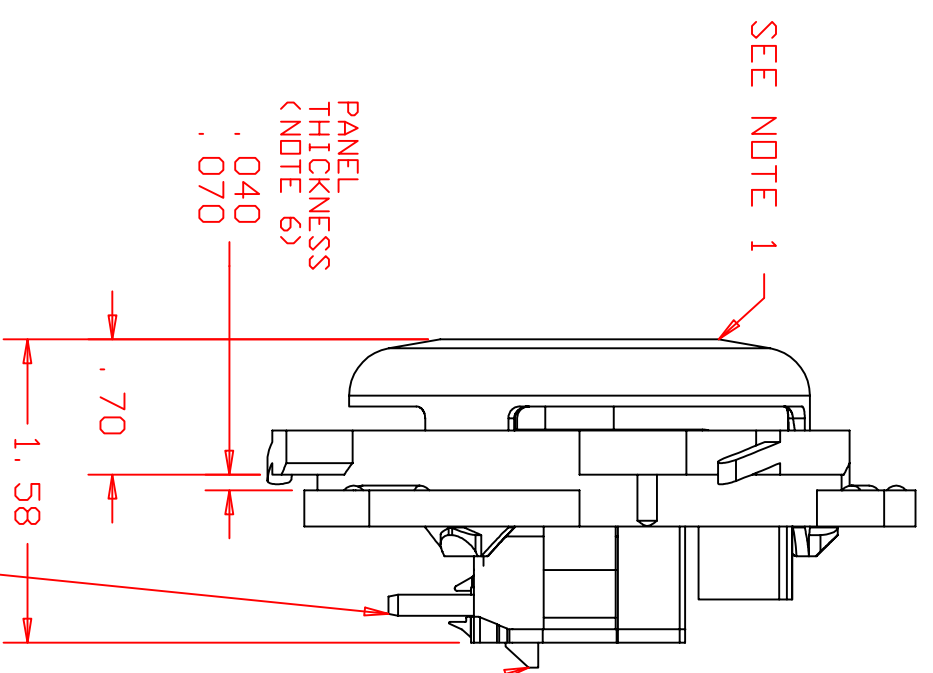
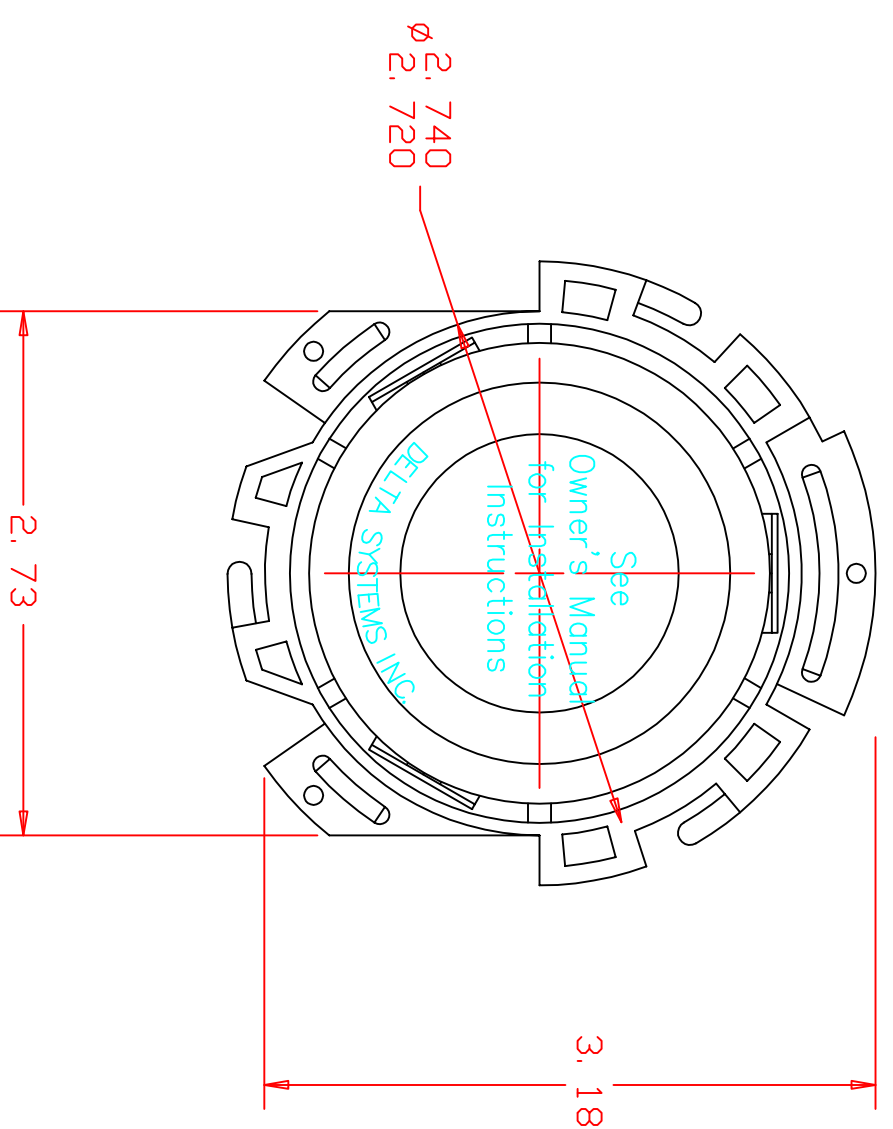


REVISIONS			
A	UPDATED NOTES, CR1397	10/02/00	JH
B	MODIFY TEXT, ADD PATENT# CR1405	04/11/01	JH
C	NOTE 4 WAS 4.6 F1.7 LBS. @400"	10/13/04	MA
D	UPDATED MOD. BACK COVER, CR1742	08/27/09	MA
E	UPDATE MATERIAL CR1908	07/21/10	ERB
F	CN2613; -52 OBSOLETE	11/11/10	ERB



RECOMMENDED MOUNTING HOLE
(FOR REFERENCE ONLY)



NOTES

DESIGNATES CRITICAL CHARACTERISTICS

- 1) .040-.150 DEPRESSION REQUIRED FOR ELECTRICAL POLE CHANGE OF STATE.
- 2) PLASTIC MATERIAL: POLYPROPYLENE
- 3) SWITCH REQUIRES 55° CLOCKWISE ROTATION TO LOCK IN PLACE
- 4) FORCE TO DEPRESS CAP: 250" IS 2.5 ±1.0 LBS.
- 5) PROPERLY INSTALLED SWITCH FRAME WILL SUPPORT A STATIC LOAD OF 350 LBS. AT 60°F.
- 6) THICKNESS INCLUDES PAINT AND/OR ANY OTHER LAYERS APPLIED BETWEEN SWITCH AND PANEL.
- 7) DATE CODE INDICATING YEAR, MONTH, AND DAY OF MONTH MANUFACTURED STAMPED ON HOUSING (PREFIX W/6).
- 8) INTEGRITY OF WELD & SWITCH FUNCTIONALITY TESTED AFTER ASSEMBLY.
- 9) MATING TERMINAL IS PACKARD P/N 12034046 (18-20 GA WIRE) P/N 12066214 (14-16 GA WIRE)
- 10) DELTA IS RESPONSIBLE FOR COMPLIANCE TO THIS SPECIFICATION. THE FUNCTION AND ADEQUACY OF THE SAFETY SYSTEM IN WHICH THIS COMPONENT IS USED IS THE RESPONSIBILITY OF THE DESIGNER AND BUILDER OF THE SYSTEM (INCLUDING BUT NOT LIMITED TO THE SEAT DESIGN, SWITCH LOCATION, FOAM DENSITY AND DESIGN).
- 11) THIS PRODUCT COVERED BY THE FOLLOWING U.S. PATENTS: 5,424,502 & 6,207,910.

TABLE 1

P/N	POLE	SHORTING	COLOR
6544-02	A	NO	ALL BLACK FRAME, CAP AND SWITCH
6544-03	B	NC/ND	ALL GRAY FRAME, CAP AND SWITCH
6544-53	NC/ND	NC/ND	BLACK SEAT FRAME, GRAY CAP, BLACK SWITCH BODY, GRAY PLUNGER
6544-51	NC	YES	ALL GRAY FRAME, CAP AND SWITCH

DELTA SYSTEMS, INC. DOES NOT ASSUME ANY LIABILITY ARISING OUT OF THE MISAPPLICATION OF ANY PRODUCT

UNLESS OTHERWISE SPECIFIED DIMENSIONS ARE IN INCHES TOLERANCES ARE .02 .xxx .005 ANG1°

DELTA SYSTEMS INC. STREETSBORO, OHIO 44241

LOW PROFILE DOUBLE POLE TWIST LOCK SEAT SWITCH

COMPUTER GENERATED DRAWING - NO MANUAL CHANGES ALLOWED DD NOT SCALE DRAWING

SIZE C SCALE N/A PROJECT NO. EX360 REV F