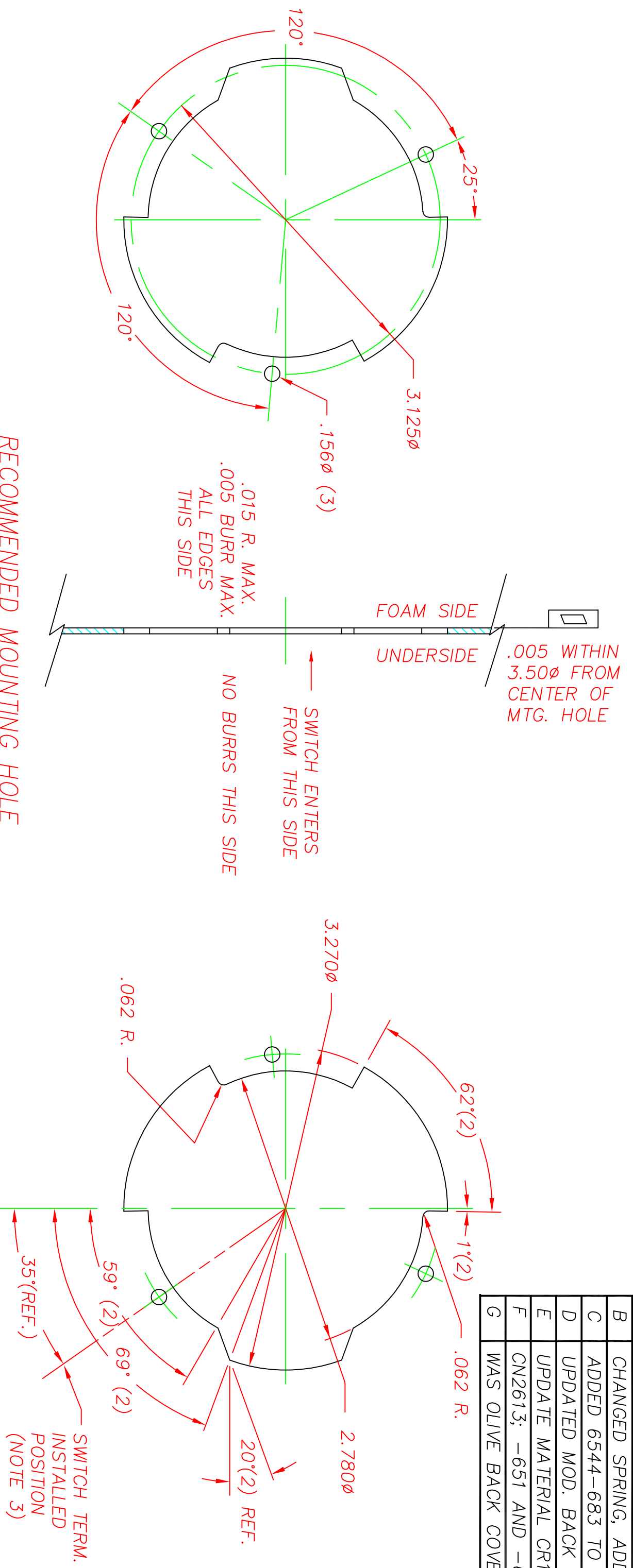
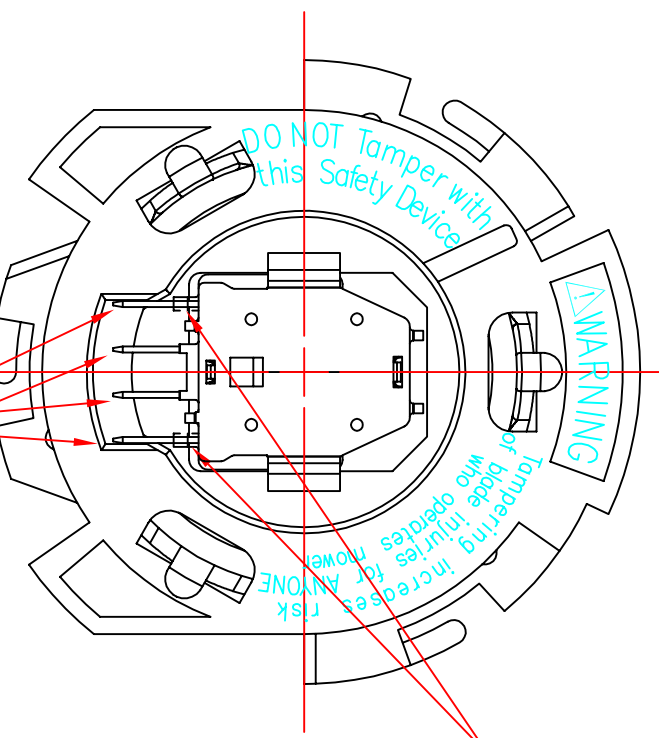
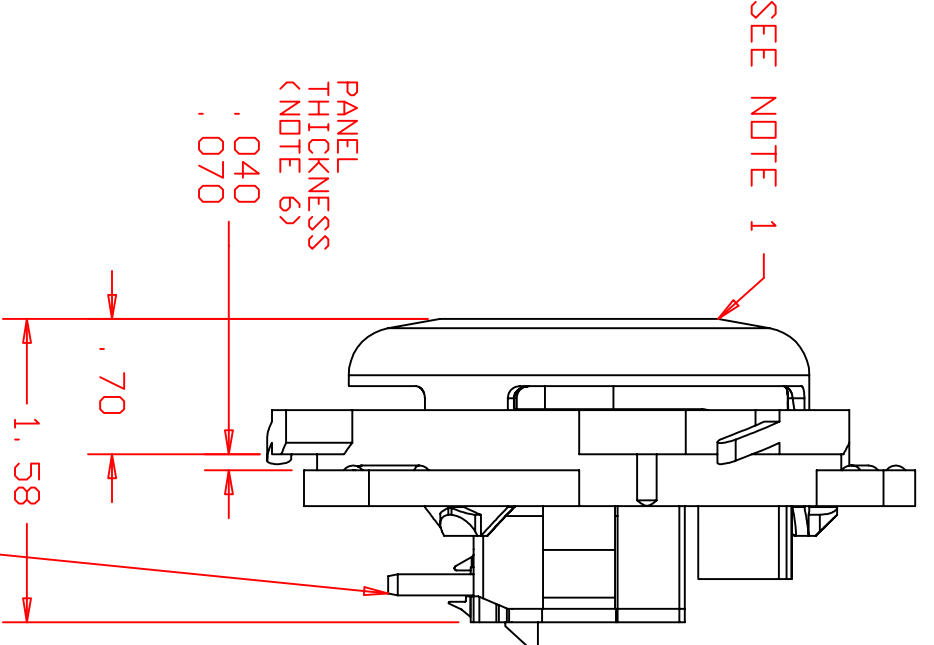
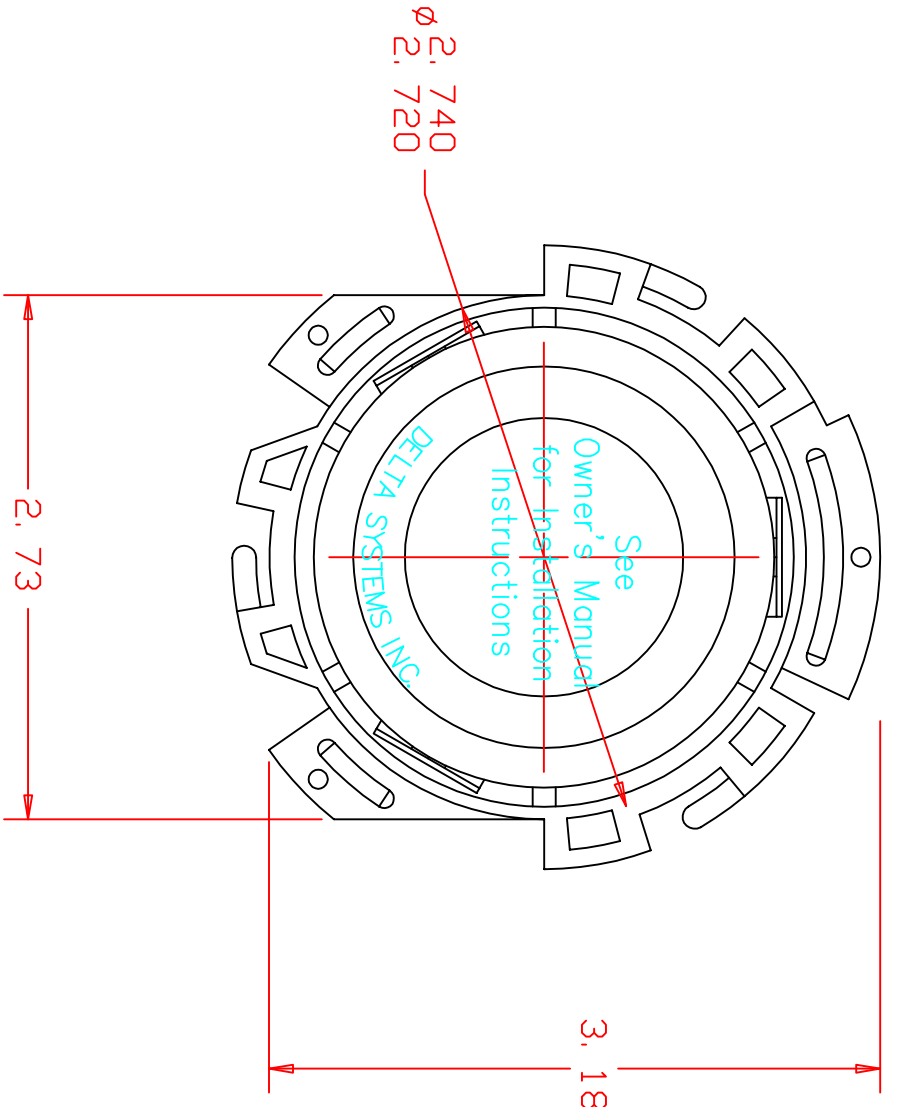


REVISIONS			
B	CHANGED SPRING, ADD PAT# CR1405	04/11/01	JH
C	ADDED 6544-683 TO TABLE, CR1600	03/15/05	MA
D	UPDATED MOD. BACK COVER, CR1742	08/27/09	MA
E	UPDATE MATERIAL CR1908	07/21/10	ERB
F	CN2613; -651 AND -652 OBSOLETE	11/11/10	ERB
G	WAS OLIVE BACK COVER, CN2742	02/22/11	CAK



**RECOMMENDED MOUNTING HOLE**  
(FOR REFERENCE ONLY)



**NOTES**  
Δ DESIGNATES CRITICAL CHARACTERISTICS

- 1) .040-.150 DEPRESSION REQUIRED FOR ELECTRICAL POLE CHANGE OF STATE.
- 2) PLASTIC MATERIAL: POLYPROPYLENE
- 3) SWITCH REQUIRES 55° CLOCKWISE ROTATION TO LOCK IN PLACE (AS VIEWED FROM TERMINAL SIDE OF MOUNTING PANEL).
- 4) FORCE TO DEPRESS CAP .250 FROM AT REST POSITION IS 5.0 ±1.5 LBS.
- 5) PROPERLY INSTALLED SWITCH FRAME WILL SUPPORT A STATIC LOAD OF 350 LBS. AT 60°F.
- 6) THICKNESS INCLUDES PAINT AND/OR ANY OTHER LAYERS APPLIED BETWEEN SWITCH AND PANEL.
- 7) DATE CODE INDICATING YEAR, MONTH, AND DAY OF MONTH MANUFACTURED STAMPED ON SWITCH HOUSING. PREFIX WITH "6".
- 8) INTEGRITY OF WELD & SWITCH FUNCTIONALITY TESTED AFTER ASSEMBLY.
- 9) MATING TERMINAL IS PACKARD P/N 12034046 (18-20 GA WIRE) P/N 12066214 (14-16 GA WIRE)
- 10) DELTA IS RESPONSIBLE FOR COMPLIANCE TO THIS SPECIFICATION. THE FUNCTION AND ADEQUACY OF THE SAFETY "SYSTEM" IN WHICH THIS COMPONENT IS USED IS THE RESPONSIBILITY OF THE DESIGNER AND BUILDER OF THE SYSTEM (INCLUDING BUT NOT LIMITED TO THE SEAT DESIGN, SWITCH LOCATION, FOAM DENSITY AND DESIGN).
- 11) THIS PRODUCT COVERED BY THE FOLLOWING U.S. PATENTS: 5,424,502 & 6,207,910.

TABLE #1

P/N	POLE	SHORTING	COLOR
6544-602	ND/ND	ND	ALL BLACK FRAME, CAP & SWITCH
6544-603	NC/NC	YES	ALL GRAY FRAME, CAP & SWITCH
6544-653	NC/ND	YES	BLACK SEAT FRAME, GRAY CAP, BLACK BODY, GRAY PLUNGER
6544-683	NC/NC	YES	ALL GRAY FRAME & CAP; SWITCH: GRAY BODY, BLACK BACK COVER

DELTA SYSTEMS, INC. DOES NOT ASSUME ANY LIABILITY ARISING OUT OF THE MISAPPLICATION OF ANY PRODUCT

UNLESS OTHERWISE SPECIFIED DIMENSIONS ARE IN INCHES TOLERANCES ARE: .XX# .02 .XXX# .005 ANG 1°

COMPUTER GENERATED DRAWING - NO MANUAL CHANGES ALLOWED

DO NOT SCALE DRAWING

DATE: 05/30/00  
CHECKED: JH  
DATE: 07/07/00

FINISH: SEE NOTE 1  
MATERIAL: SEE NOTE 2

SIZE: C  
SCALE: N/A

PROJECT NO: 6544-6XX  
REV: EX360

DELTA SYSTEMS INC.  
STREETSBORO, OHIO 44241

LOW PROFILE SEAT SWITCH WITH 6# SPRING