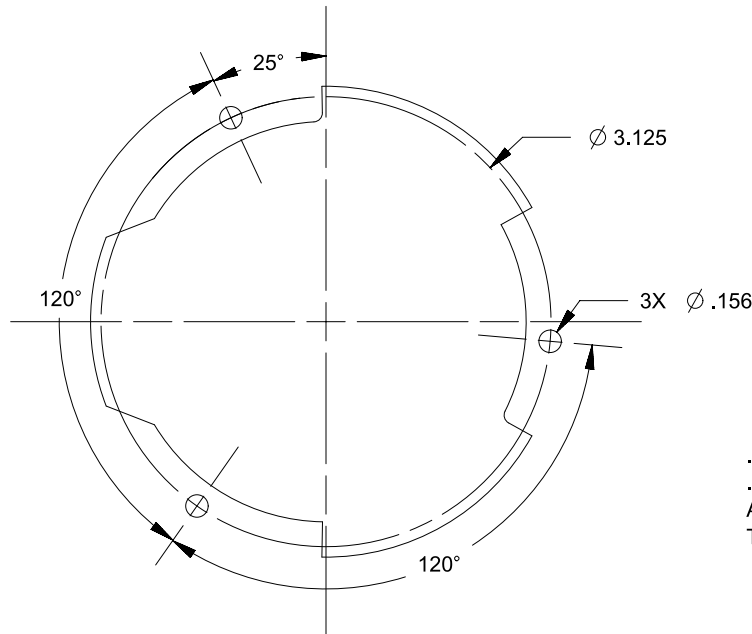


REVISIONS

REV.	DESCRIPTION	DATE	INIT
A	REMOVE 6544-902 FROM TABLE	08/01/05	JH
B	ADDED STYLE 6544-983, CR 1626	11/30/05	MA
C	UPDATED MOD. BACK COVER, CR1742	08/27/09	MA
D	UPDATE MATERIAL CR1908	07/21/10	ERB
E	ADDED 6544-902, CN3316	08/27/12	IDK
F	NOTE 4, WAS 5.75 TO 7.00, CR2060		IDK
F	1.62/1.58 WAS 1.58+/- .02, CR2060	03/26/13	IDK
7	MIGRATED TO NX, ADDED ASME NOTE, 2.73 WAS 2.740/2.720, .71 WAS .70, 1.59±.04 WAS 1.62/1.58, 2.70 WAS 2.73, ECO744	05/03/17	KEC



.005 WITHIN \varnothing 3.50 FROM THE CENTER OF THE MTG. HOLE

FOAM SIDE

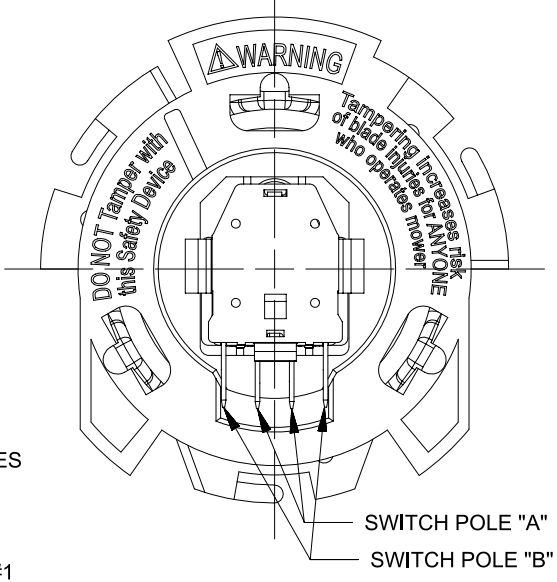
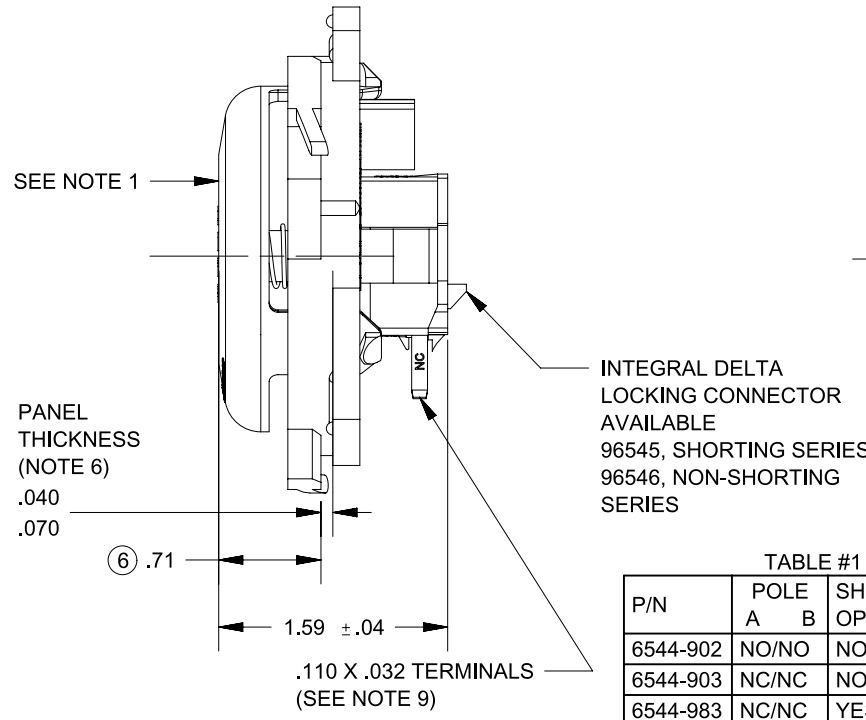
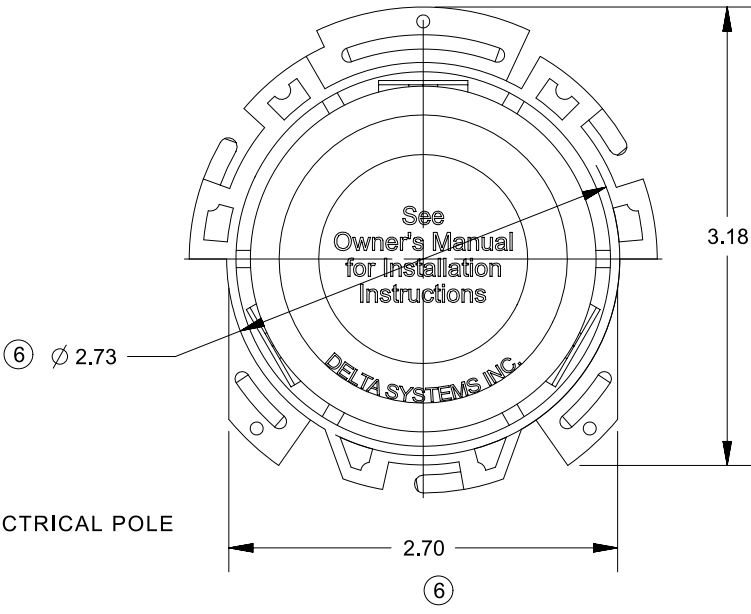
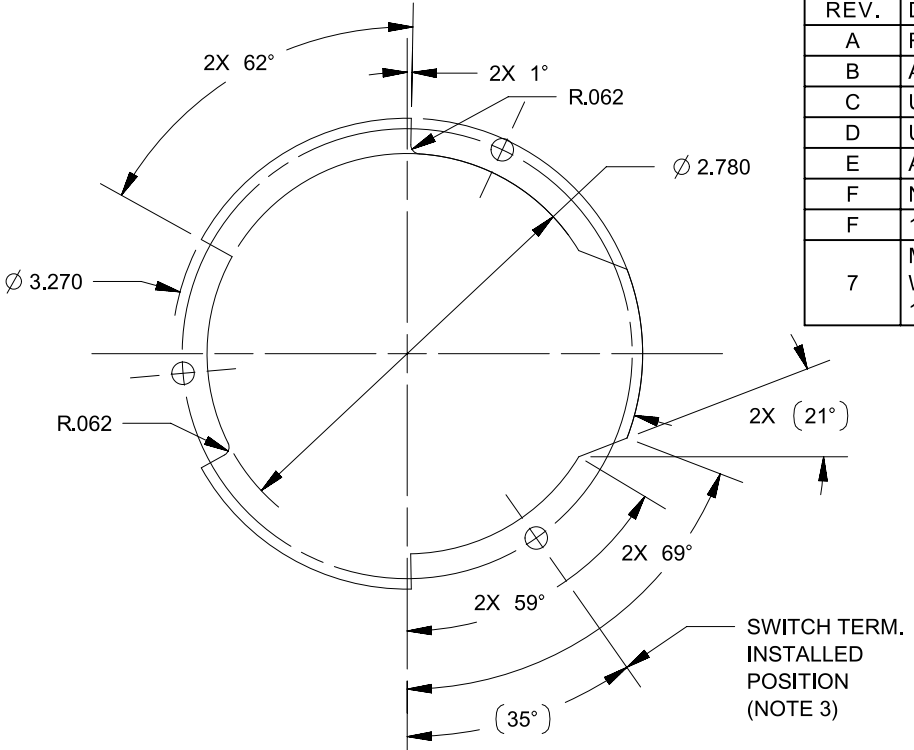
UNDERSIDE

SWITCH ENTERS FROM THIS SIDE

NO BURRS THIS SIDE

.015 R. MAX
.005 BURR MAX.
ALL EDGES THIS SIDE

RECOMMENDED MOUNTING HOLE



- NOTES**
- 1) .040-.150 DEPRESSION REQUIRED FOR ELECTRICAL POLE CHANGE OF STATE.
 - 2) PLASTIC MATERIAL: POLYPROPYLENE
TERMINALS: BRASS
 - 3) SWITCH REQUIRES 55° CLOCKWISE ROTATION TO LOCK IN PLACE (AS VIEWED FROM TERMINAL SIDE OF MOUNTING PANEL).
 - 4) FORCE TO DEPRESS CAP .250" FROM AT REST POSITION IS 5.5 LBS. TO 8.5 LBS.
 - 5) PROPERLY INSTALLED SWITCH FRAME WILL SUPPORT A STATIC LOAD OF 350 LBS. AT 60°F.
 - 6) THICKNESS INCLUDES PAINT AND/OR ANY OTHER LAYERS APPLIED BETWEEN SWITCH AND PANEL.
 - 7) DATE CODE INDICATING YEAR, MONTH, AND DAY OF MONTH MANUFACTURED STAMPED ON HOUSING.
 - 8) INTEGRITY OF WELD & SWITCH FUNCTIONALITY TESTED AFTER ASSEMBLY.
 - 9) MATING TERMINAL IS PACKARD P/N 12034046 (18-20 GA WIRE)
P/N 12066214 (14-16 GA WIRE)
 - 10) DELTA IS RESPONSIBLE FOR COMPLIANCE TO THIS SPECIFICATION. THE FUNCTION AND ADEQUACY OF THE SAFETY "SYSTEM" IN WHICH THIS COMPONENT IS USED IS THE RESPONSIBILITY OF THE DESIGNER AND BUILDER OF THE SYSTEM (INCLUDING BUT NOT LIMITED TO THE SEAT DESIGN, SWITCH LOCATION, FOAM DENSITY AND DESIGN).
 - 11) THIS PRODUCT COVERED BY THE FOLLOWING U.S. PATENTS: 5,424,502 & 6,207,910.
 - 12) INTERPRET THIS DRAWING IN ACCORDANCE WITH ASME Y14.5-2009

TABLE #1

P/N	POLE A	POLE B	SHORTING OPTION	COLOR
6544-902	NO/NO	NO	NO	ALL GRAY FRAME, BLACK CAP & BLACK SWITCH
6544-903	NC/NC	NO	NO	ALL BLACK FRAME, GRAY CAP & GRAY SWITCH
6544-983	NC/NC	YES	YES	ALL GRAY FRAME, BLACK CAP & GRAY SWITCH, BLACK BACK COVER

PROPRIETARY & CONFIDENTIAL THE INFORMATION CONTAINED IN THIS DRAWING IS THE SOLE PROPERTY OF DELTA SYSTEMS. ANY REPRODUCTION IN PART OR AS A WHOLE WITHOUT THE WRITTEN PERMISSION OF DELTA SYSTEMS IS PROHIBITED.	UNLESS OTHERWISE SPECIFIED DIMENSIONS ARE IN INCHES TOLERANCES ARE: .X± .1 .XX± .02 .XXX± .005 X°± 1°	DRAWN malbrecht	DATE 04-Oct-2002	1734 FROST ROAD STREETSBORO, OHIO 44241 330-626-2811 WWW.DELTASYSTEMSINC.COM
		CHECKED jharvey	DATE 07-Oct-2002	
APPROVED ikirbawy	DATE 06-Jun-2017	MATERIAL SEE NOTE 2	PROJECTED VIEWS ARE 3RD ANGLE	
FINISH SEE TABLE 1	DO NOT SCALE DRAWING	STATUS DS4_Concept		
DELTA SYSTEMS INC. DOES NOT ASSUME ANY LIABILITY ARISING OUT OF THE MISAPPLICATION OF ANY PRODUCT	COMPUTER GENERATED DRAWING - NO MANUAL CHANGES ALLOWED	TITLE Quick Mnt. Seat Switch w/6 lb. & Helper Spring	SIZE B	DWG. NO. 6544-9XX_APP
		SCALE NTS	SHEET 1 OF 1	PROJECT NO. EX360
				REVISION 7