

8

7

6

5

4

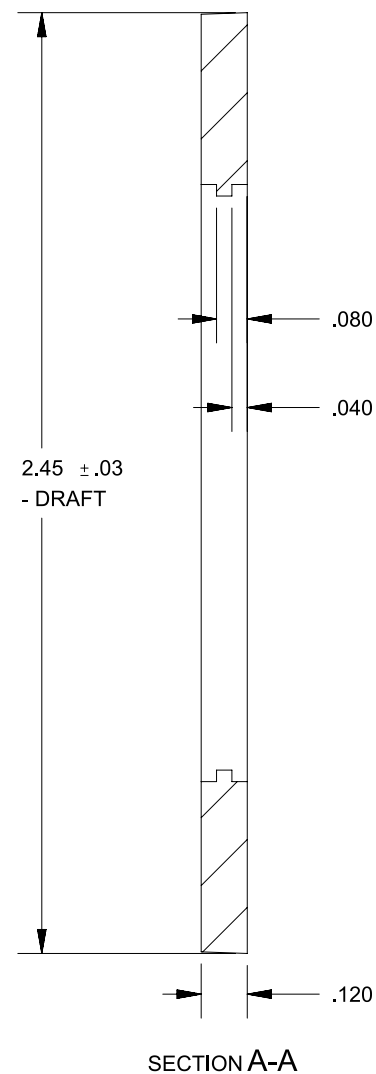
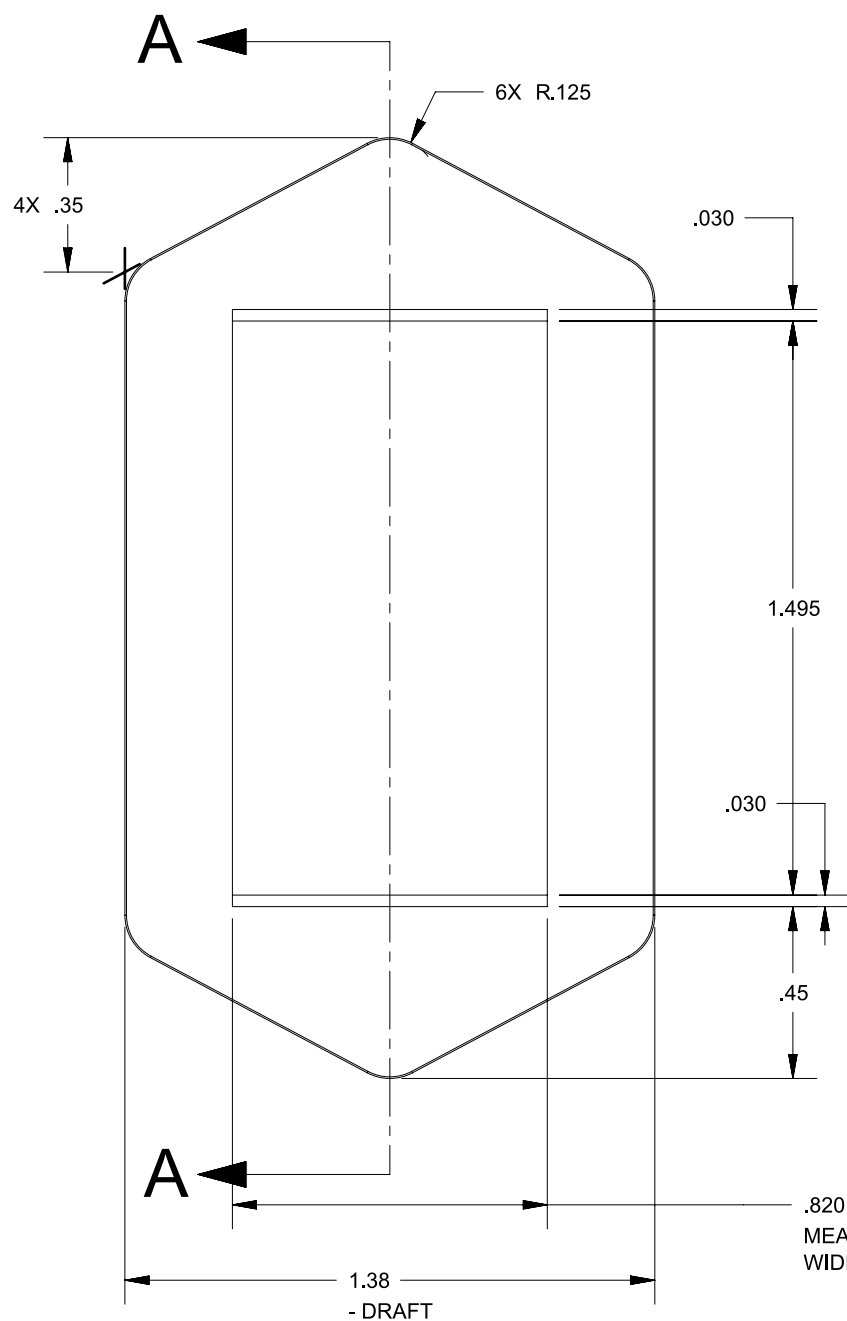
3

2

1

REVISIONS

REV.	DESCRIPTION	DATE	INIT
A	REDESIGNED PART, CR1283	02/19/99	JH
B	NEW TOOLING, CR1289	9/24/99	JH
C	UPDATED MATERIAL. CN3255	06/07/12	IDK
4	ADDED, "MEASURE AT WIDEST POINT"	12/21/21	PJC



NOTES

- 1) MATERIAL IS POLYPROPYLENE
- 2) RETAINER TO BE SEATED FULLY OVER THE SNAP WINGS OF SWITCH FROM UNDERSIDE OF THE PANEL AFTER THE SWITCH IS INSTALLED.
- 3) INTERPRET THIS DRAWING IN ACCORDANCE WITH ASME Y14.5-2009
- 4) MUST BE IN COMPLIANCE WITH DIRECTIVE 2011/65/EU OF THE EUROPEAN PARLIAMENT AND THE COUNCIL OF 8 JUNE 2011 ON THE RESTRICTION OF THE USE OF CERTAIN HAZARDOUS SUBSTANCES IN ELECTRICAL AND ELECTRONIC EQUIPMENT (ROHS DIRECTIVE)

PROPRIETARY & CONFIDENTIAL THE INFORMATION CONTAINED IN THIS DRAWING IS THE SOLE PROPERTY OF DELTA SYSTEMS. ANY REPRODUCTION IN PART OR AS A WHOLE WITHOUT THE WRITTEN PERMISSION OF DELTA SYSTEMS IS PROHIBITED.	UNLESS OTHERWISE SPECIFIED DIMENSIONS ARE IN INCHES TOLERANCES ARE: .X± .1 .XX± .02 .XXX± .01 X°± 1°	DRAWN ajc	DATE 06-May-1993	 1734 FROST ROAD STREETSBORO, OHIO 44241 330-626-2811 WWW.DELTASYSTEMSINC.COM							
		CHECKED twilliams	DATE 17-May-1993								
APPROVED dzlatic	DATE 22-Dec-2021	MATERIAL AS NOTED	PROJECTED VIEWS ARE 3RD ANGLE 								
DELTA SYSTEMS INC. DOES NOT ASSUME ANY LIABILITY ARISING OUT OF THE MISAPPLICATION OF ANY PRODUCT	COMPUTER GENERATED DRAWING - NO MANUAL CHANGES ALLOWED	FINISH BLACK	DO NOT SCALE DRAWING	STATUS DS4_Design	TITLE PTO Switch Retainer APP	SIZE B	DWG. NO. 972301_APP	SCALE NTS	SHEET 1 OF 1	PROJECT NO. EX315	REVISION 4

8

7

6

5

4

3

2

1