

# RAIL MOUNT PLUNGER SWITCHES

## Model Series 6300/6400



- Mounting Type-Rail
- Allows for quick installation
- One, two or three independent electrical circuits
- RoHS, REACH and Conflict Mineral compliant as noted\*

### OPERATION

Delta Systems' Plunger Switches are used to sense the position of mechanical linkages and controls. The patented wiping action switch contact prevents carbon buildup, keeping contact resistance low and extending switch life in rugged environments.

### ELECTRICAL SPECIFICATIONS

Cycles: Resistive: 75,000, Inductive: 10,000

Operating Voltage: Range: 12-14V<sub>DC</sub>

Operating Current: 3 Amps

Pre-travel, inches: .40-.150

Operating Temperature Range: -20 °F to 150 °F

Storage Temperature: -30 °F to 150 °F

### ENVIRONMENTAL RATINGS

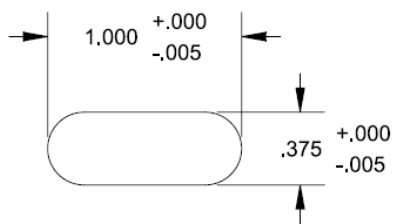
Exposure	Specification
Ingress Protection	IEC IP67
Salt Fog	ASTM B117. 96 hours
Chemical Resistance	ASTM Ref C Fuel, Diesel Fuel, Oil, Antifreeze, Freon, Paint, Latex, Gasoline, Gas with 10% ethanol, WD-40, Battery Acid, Ammoniated Glass Cleaner, Kerosene, GOJO®, Fertilizer

## AVAILABLE CONFIGURATIONS

Part Number	Electrical Configuration	Panel Thickness(es)	Mating Connector	Environmental Rating
6300-001	NO/NC/NC	.108" max, .170" max	Delta 972367	Unsealed
6300-004	NC/NO/NO	.108" max, .170" max	Delta 972367	Unsealed
6301-001	NO/NC/NC	2mm max, 5mm max	Delta 972367	Unsealed
6400-20	NO	.108" max, .170" max	Delphi 2973872	Unsealed
6400-81	NC	.108" max, .170" max	Delphi 2973872	Unsealed
6400-81AP	NC	.108" max, .170" max	Delphi 2973872	Unsealed
6400-82	NO	.108" max, .170" max	Delphi 2973872	Unsealed
6400-82AP	NO	.108" max, .170" max	Delphi 2973872	Unsealed
6400-84	NO/NC	.108" max, .170" max	Delphi 2977048	Unsealed
6400-85	NO/NO	.108" max, .170" max	Delphi 2977048	Unsealed
6400-86	NC/NC	.108" max, .170" max	Delphi 2977048	Unsealed
6400-92	NO	.120"±.005"	Delphi 2973872	Unsealed
6400-94	NO/NC	.108" max, .170" max	Delphi 2977048	Splash-proof Plunger
6405-84*	NO/NC	.108" max, .170" max	Delphi 2977048	Splash-proof Connector

Note: \* Not RoHS, REACH and Conflict Mineral compliant

## MOUNTING



Panel thicknesses include paint, overlays, decals and any other coverings. A square edge is required on the wing retention side of the mounting slot.

## DIMENSIONS

Note: For specific Part information please refer to the Application print.

## ACCESSORIES

Item #	Manufacturer	Description
972367	Delta Systems	Connector Housing-3 Pole
9913	Delta	Rail Housing Boot

Note: Life expectancy and switch performance are largely dependent on application. It is the user's responsibility to determine suitability of this product for the application. This information is intended as a guide for proper application.