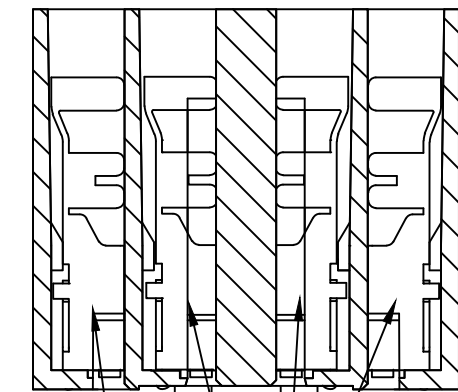
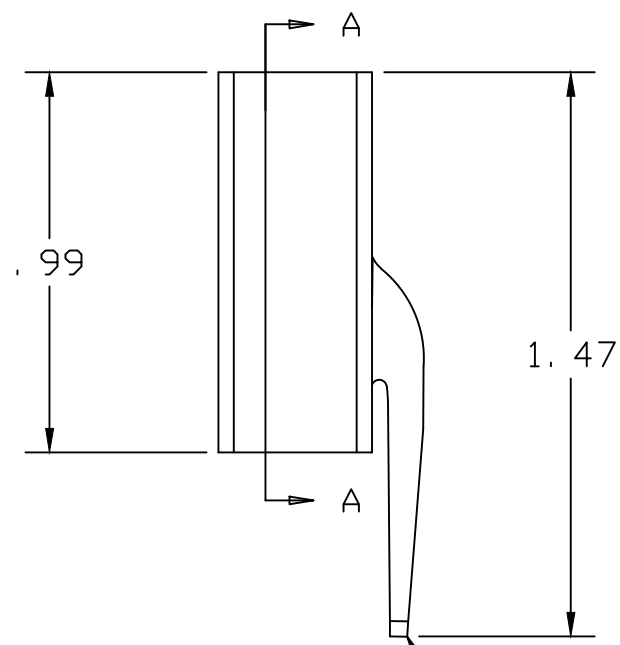
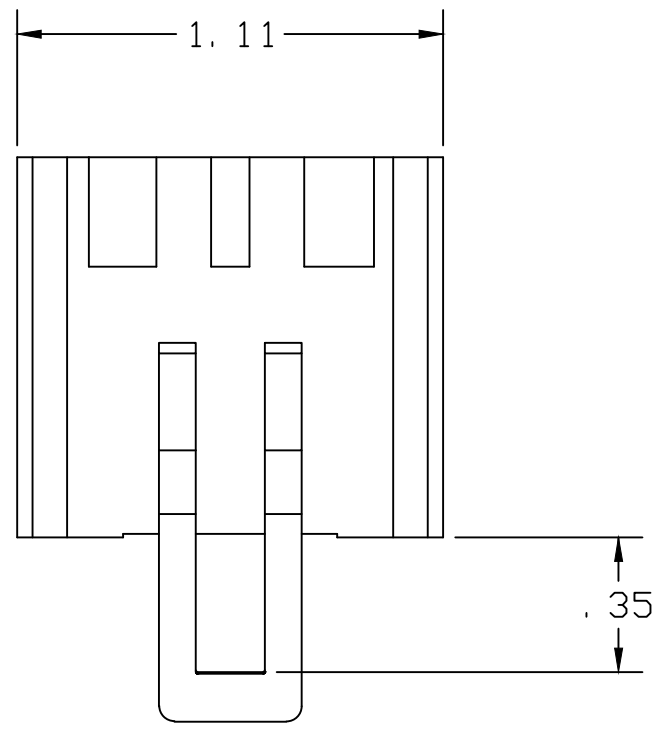


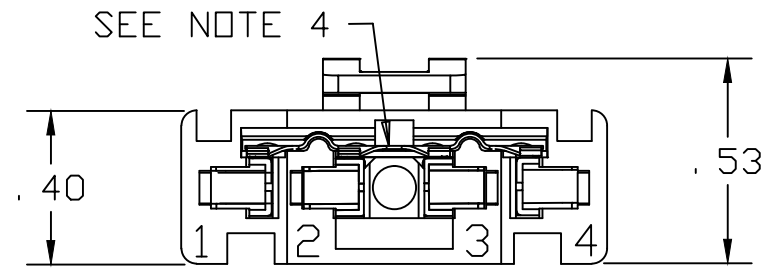
REVISIONS

~	INITIAL RELEASE, CR 1563	08/23/04	MA
A	MODIFIED TERM. TABS, CR1666	01/24/07	MA
B	UPDATED MAT'L, CN3255	06/07/12	IDK



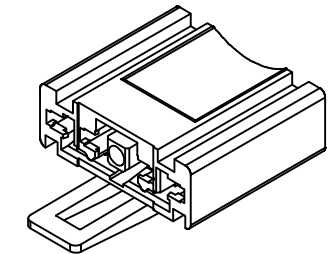
INSIDE TERMINALS
SWITCH POLE A
("2" & "3")
SEE NOTE 2

OUTSIDE SWITCH TERMINALS
SWITCH POLE B ("1" & "4")
SEE NOTE 2



SEE NOTE 4

SEE NOTE 1



△ DESIGNATES CRITICAL CHARACTERISTIC

NOTES

- 1) LOCKING CLIP MATES WITH DSI 6444-83 SERIES SWITCH.
 - 2) PACKARD 280 SERIES, CUSTOMER INSTALLED TERMINALS, 2-4 REQUIRED:
- | | |
|-------------|------------|
| TYPICAL P/N | WIRE GAUGE |
| 12034046 | 18-20 |
| 12066214 | 14-16 |
- 3) CONNECTOR MATERIAL IS OLIVE COLOR POLYPROPYLENE
 - 4) SHORTING SPRING SHOWN IN FAIL SAFE MODE (NORMALLY CLOSED, BOTH POLES). SPRING MOVES AWAY FROM TERMINALS WHEN PLUGGED INTO DSI SWITCH.
 - 5) DATE CODE INDICATES YEAR, MONTH AND DAY OF MANUFACTURE.

DELTA SYSTEMS, INC. DOES NOT ASSUME ANY LIABILITY ARISING OUT OF THE MISAPPLICATION OF ANY PRODUCT		DRAWN MA	DATE 03/05/04	DELTA SYSTEMS INC. STREETSBORO, OHIO 44241
		CHECKED JM	DATE 03/08/04	
		MATERIAL SEE NOTE 3		TITLE LOW PROFILE TWO POLE SHORTING CONNECTOR ASSEMBLY
COMPUTER GENERATED DRAWING - NO MANUAL CHANGES ALLOWED		UNLESS OTHERWISE SPECIFIED DIMENSIONS ARE IN INCHES TOLERANCES ARE: .xx± .02 .xxx± .005 ANG± 1°		SIZE B
		DO NOT SCALE DRAWING		DWG. NO. 96549-0L
		FINISH OLIVE	SCALE 2X	PROJECT NO. EX360
				REV B