

SEALED PLUNGER SWITCHES

Model Series 6403



- Sealed to IP67
- One or two independent electrical circuits
- Mounting Type-Quick Installation
- Easy to design into your application
- RoHS, REACH and Conflict Mineral compliant

OPERATION

Delta Systems' Sealed Plunger Switches are sealed to IP67, both plunger and terminal sides. These switches have the same form, fit and function as their unsealed counterparts. 6403 Series are designed where high reliability is required in a harsh environment application.

ELECTRICAL SPECIFICATIONS

Cycles: Resistive: 75,000, Inductive: 10,000
 Operating Voltage: Range: 9-16V_{DC}
 Operating Current: 3 Amps
 Pre-travel, inches: .040-.150
 Static Force @ 0.48" Travel 8.1+/-0.3 lb.

ENVIRONMENTAL RATINGS

Exposure	Specification
Ingress Protection	IEC IP67
Operating Temperature Range	-30 °C to 65 °C
Chemical Resistance	EP455-5.8 Brush, Gasoline, Diesel Fuel, Hydraulic Oil, Engine Oil, 10% DEET Bug Repellent, Salt Water Solution, Wax, Sunscreen, Insect Killer, Weed Killer, Liquid Fertilizer, Bleach Disinfectant Spray, Mole Repellent, Bleach, Ammonia, Isopropyl Alcohol, Degreaser, Battery Acid

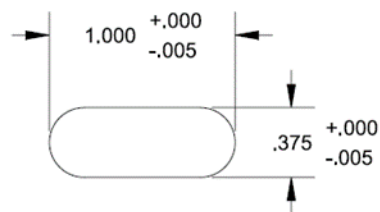
AVAILABLE CONFIGURATIONS

Part Number	Electrical Configuration	Mating Connector	Housing Color	Environmental Rating
6403-82	NO	Aptiv 2977048	Blue	IP67
6403-84	NO/NC	Aptiv 2977048	Blue	IP67
6403-85	NO/NC	Molex 33472-4801	Blue	IP67
6403-86	NO/NC	Molex 33472-4801	Black	IP67

DIMENSIONS

Note: Please refer to the Application print

RECOMMENDED MOUNTING



PANEL THICKNESS

Panel Thickness: 0.108" and 0.170" including paint, decals, etc.

Note: Life expectancy and switch performance are largely dependent on application. It is the user's responsibility to determine suitability of this product for the application. This information is intended as a guide for proper application.