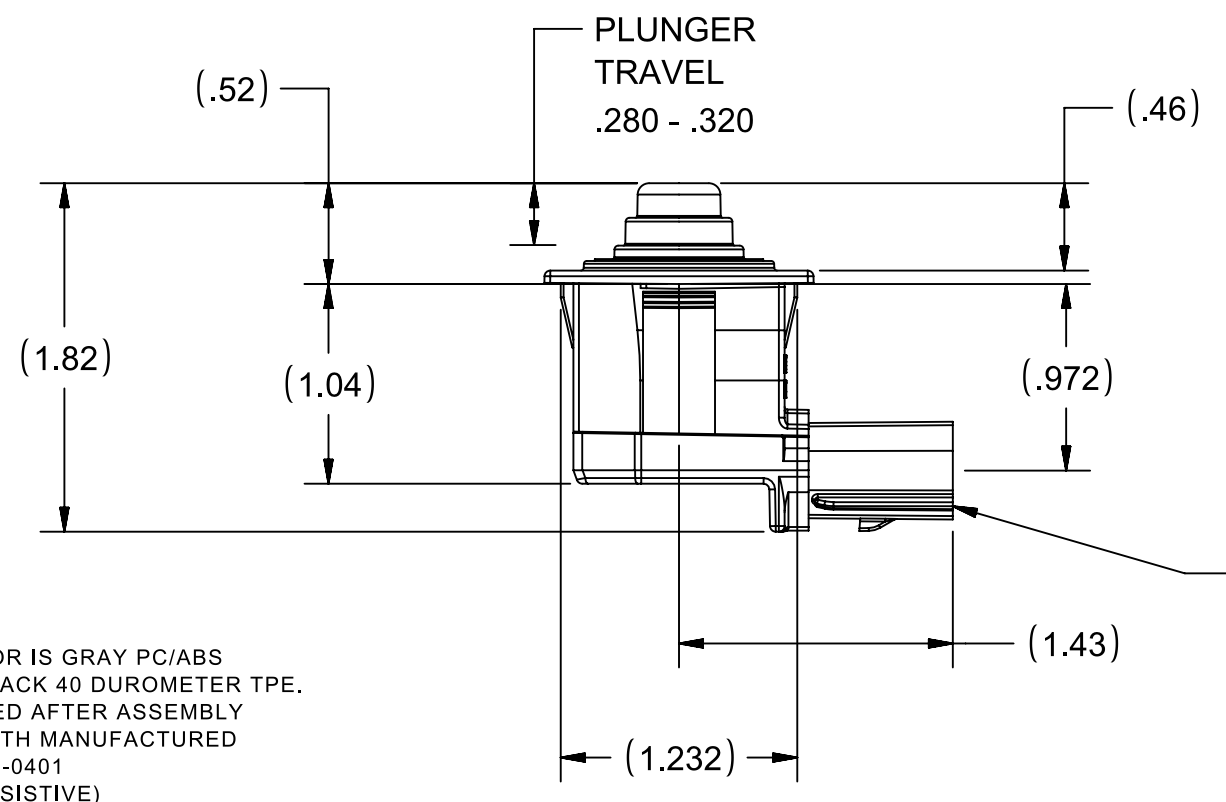
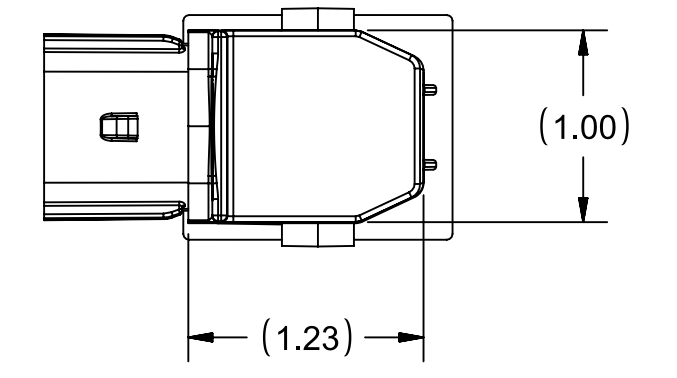
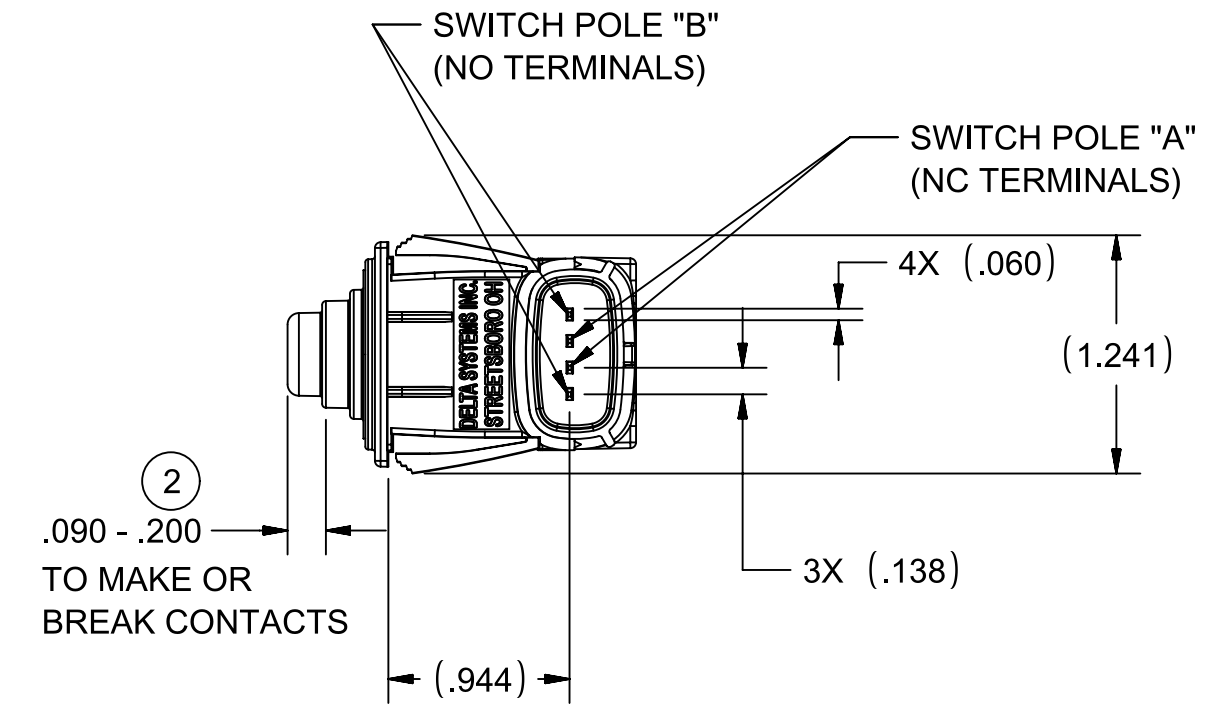
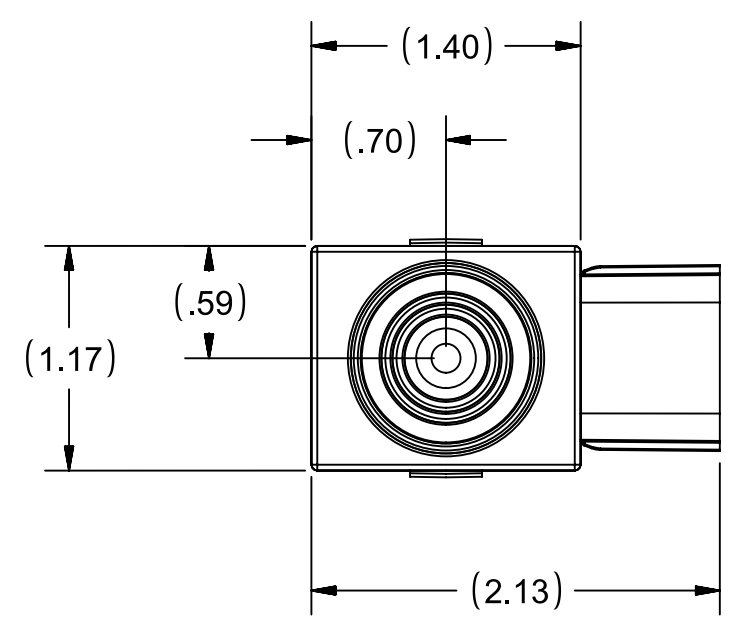
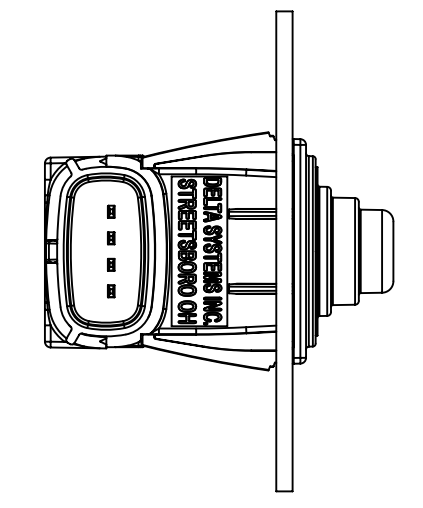
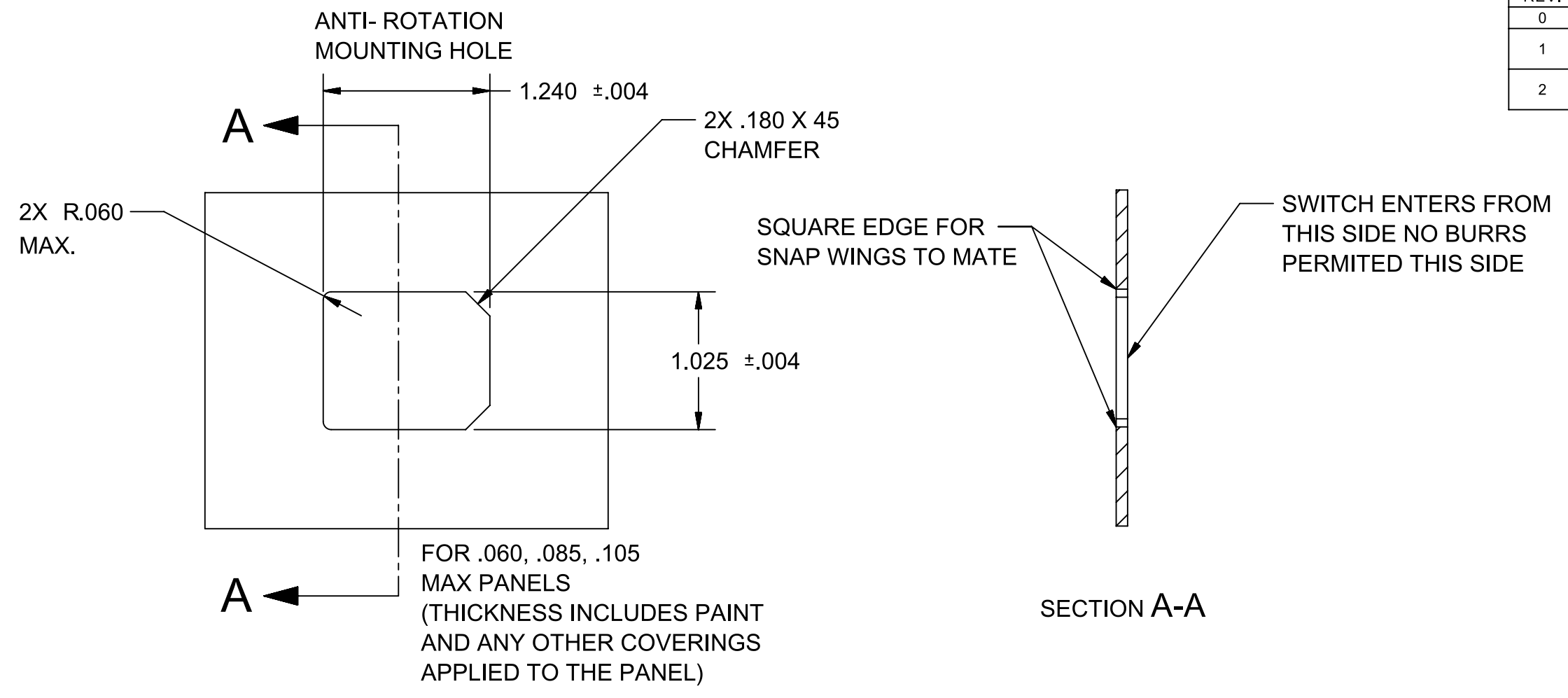
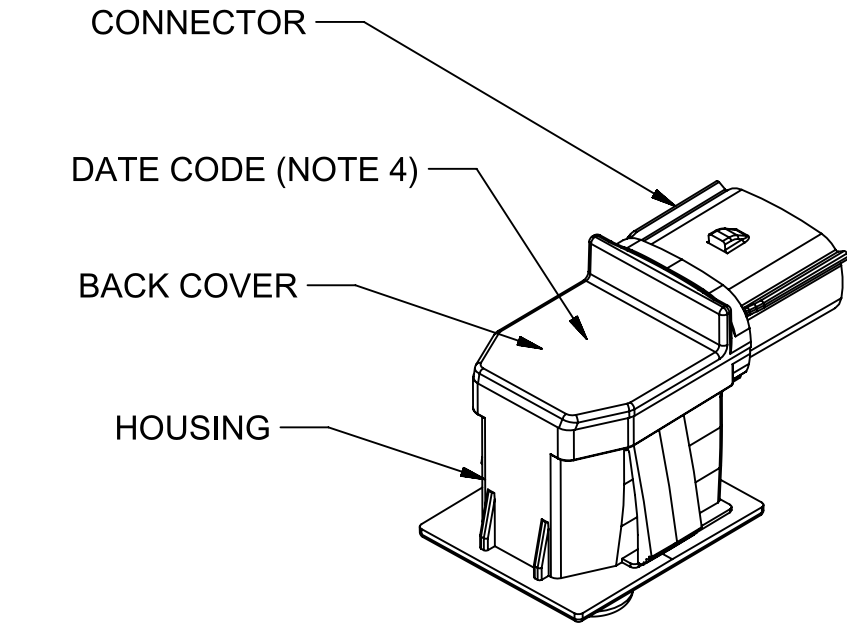
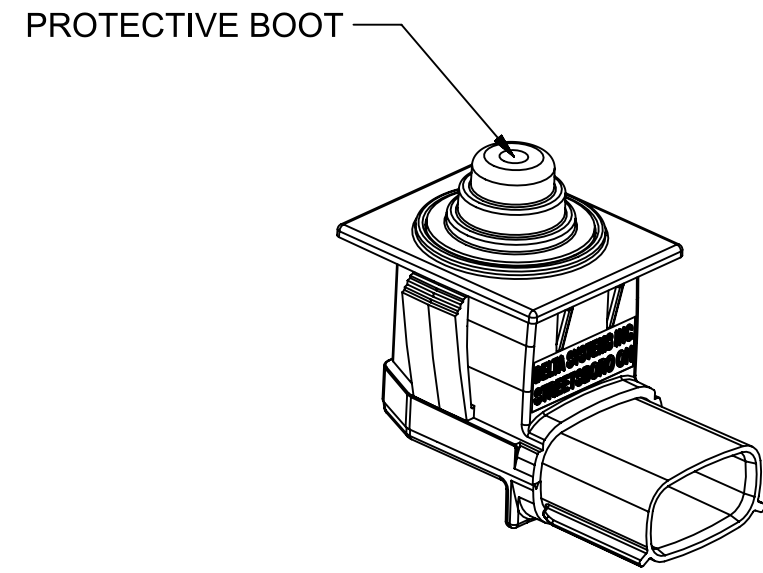


REVISIONS			
REV.	DESCRIPTION	DATE	INIT
0	INITIAL RELEASE	11/18/2021	DZ
1	PRINT MATCH PART FOR MEASURED BREAK BEFORE MAKE AND NOTE 11	08/08/22	PJC
2	5.8 TO 8.8 LBS AT .25" PLUNGER TRAVEL WAS 5.65 +/- .65LBS AT .2". .200 WAS .182	11/03/22	PJC



- NOTES
- 1) TERMINALS ARE NON-PLATED HALF HARD BRASS
 - 2) HOUSING & BACK COVER ARE BLACK PC/ABS, CONNECTOR IS GRAY PC/ABS
PLUNGER IS POLYPROPYLENE, PROTECTIVE BOOT IS BLACK 40 DUROMETER TPE.
 - 3) INTEGRITY OF WELD AND SWITCH FUNCTIONALITY TESTED AFTER ASSEMBLY
 - 4) DATE CODE INDICATES YEAR, MONTH, AND DAY OF MONTH MANUFACTURED
 - 5) MATING CONNECTOR MOLEX MX-150 SERIES 4 PIN 33471-0401
 - 6) RATED 3A @ 12-14VDC (CYCLES = 10K INDUCTIVE; 75K RESISTIVE)
 - 7) MINIMUM CURRENT: 10mA @ 12-14 VDC
 - 8) MECHANICAL LIFE: 100K CYCLES
 - 9) IP67 RATED
 - 10) OPERATING TEMPERATURE: -30° C TO 85° C
 - 11) 4X .060 X .030 MALE TERMINALS
 - 12) ACTUATION FORCE IS 5.8 TO 8.8 LBS AT .25 INCH PLUNGER TRAVEL WITH SEALED CONNECTOR INSTALLED.
 - 13) LIFE EXPECTANCY AND SWITCH PERFORMANCE ARE LARGELY DEPENDENT ON APPLICATION. IT IS THE USER'S RESPONSIBILITY TO DETERMINE SUITABILITY OF THIS PRODUCT FOR THE APPLICATION THIS INFORMATION IS INTENDED AS A GUIDE FOR PROPER APPLICATION.
 - 14) MUST BE IN COMPLIANCE WITH DIRECTIVE 2011/65/EU OF THE EUROPEAN PARLIAMENT AND THE COUNCIL OF 8 JUNE 2011 ON THE RESTRICTION OF THE USE OF CERTAIN HAZARDOUS SUBSTANCES IN ELECTRICAL AND ELECTRONIC EQUIPMENT (ROHS DIRECTIVE)
 - 15) INTERPRET THIS DRAWING IN ACCORDANCE WITH ASME Y14.5-2009

PROPRIETARY & CONFIDENTIAL THE INFORMATION CONTAINED IN THIS DRAWING IS THE SOLE PROPERTY OF DELTA SYSTEMS. ANY REPRODUCTION IN PART OR AS A WHOLE WITHOUT THE WRITTEN PERMISSION OF DELTA SYSTEMS IS PROHIBITED.	UNLESS OTHERWISE SPECIFIED DIMENSIONS ARE IN INCHES TOLERANCES ARE: .X± .1 .XX± .02 .XXX± .005 X°± 1	DRAWN dzlatic	DATE 18-Nov-2021	DELTA SYSTEMS 1734 FROST ROAD STREETSBORO, OHIO 44241 330-626-2811 WWW.DELTASYSTEMSINC.COM				
		CHECKED rkawolics	DATE 17-Feb-2022					
		APPROVED ikirbawy	DATE 23-May-2022					
		MATERIAL -	PROJECTED VIEWS ARE 3RD ANGLE					
DELTA SYSTEMS INC. DOES NOT ASSUME ANY LIABILITY ARISING OUT OF THE MISAPPLICATION OF ANY PRODUCT	COMPUTER GENERATED DRAWING - NO MANUAL CHANGES ALLOWED	FINISH -	DO NOT SCALE DRAWING	STATUS DS4_Design	SCALE NTS	SHEET 1 OF 1	PROJECT NO. 280	REVISION 2