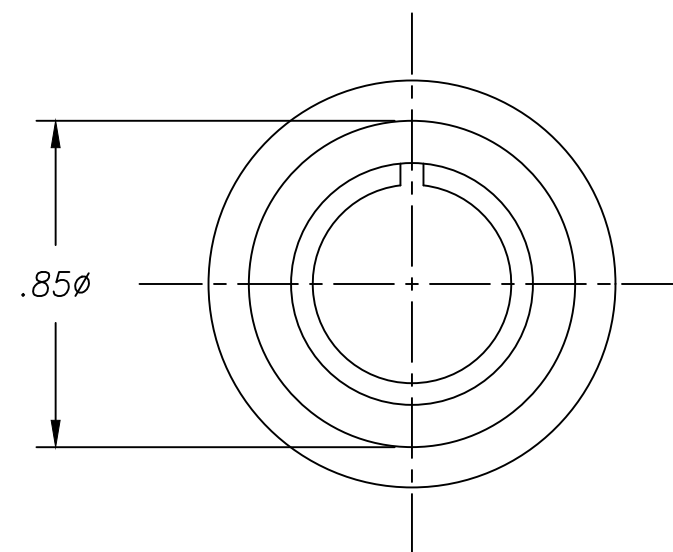
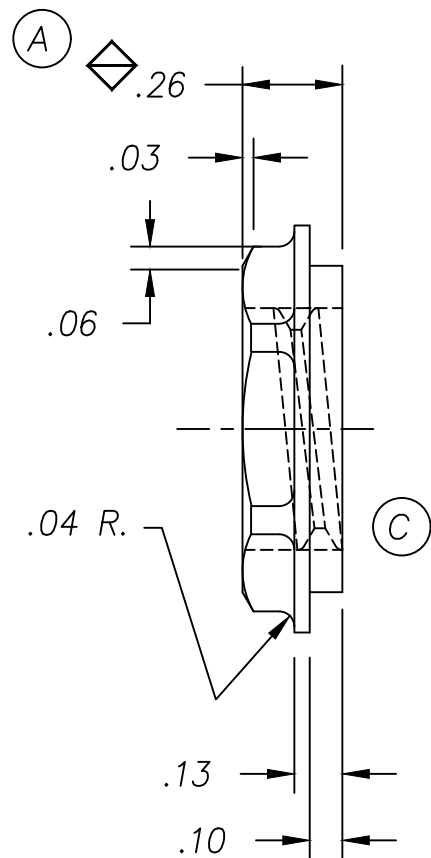
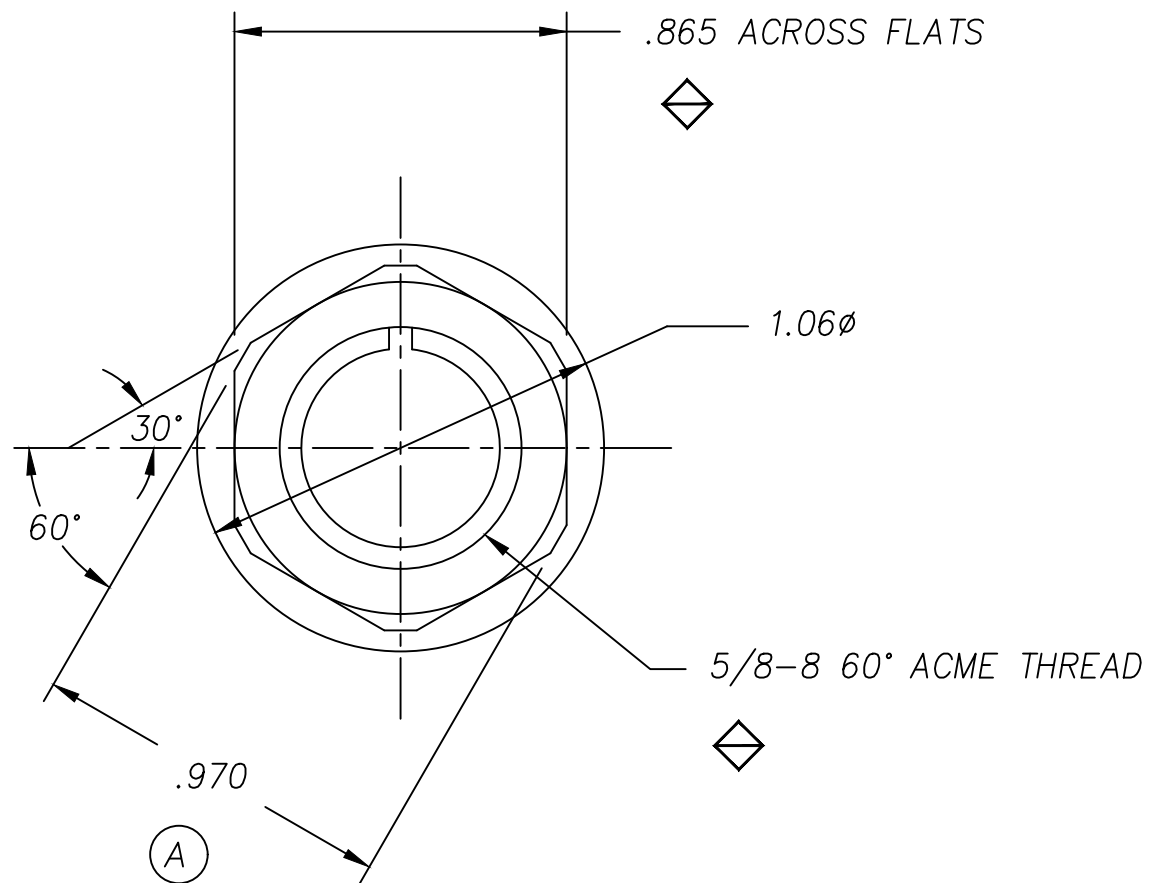


REVISIONS			
A	.26 WAS .23; .970 WAS .950	08/23/93	TW
B	ADDED NOTE 3, REV TORQUE LIMIT, CR#628	12/14/94	TW
C	MOVED THREADS, CR 1078	02/11/98	JH



NOTES:

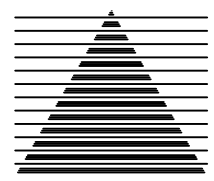
- 1-MAXIMUM TORQUE IS 36 IN LBS.
- 2-MATERIAL: DELTON™ (BLACK).
- (B) 3-PANEL THICKNESS RANGE .05 TO .170

DELTA SYSTEMS, INC. DOES NOT ASSUME ANY LIABILITY ARISING OUT OF THE MISAPPLICATION OF ANY PRODUCT

UNLESS OTHERWISE SPECIFIED DIMENSIONS ARE IN INCHES TOLERANCES ARE:
 .xx± .020 .xxx± .005 ANG± 1°

DO NOT SCALE DRAWING

DRAWN	DATE
AJC	10/12/92
CHECKED	DATE
TW	10/26/92
MATERIAL	
NOTE 2	
FINISH	
NOTE 2	

		DELTA SYSTEMS INC. STREETSBORO, OHIO 44241	
SIZE	DWG. NO.	PROJECT NO.	REV
B	9252	E-304	C
SCALE	SHEET		OF
2X	1		1