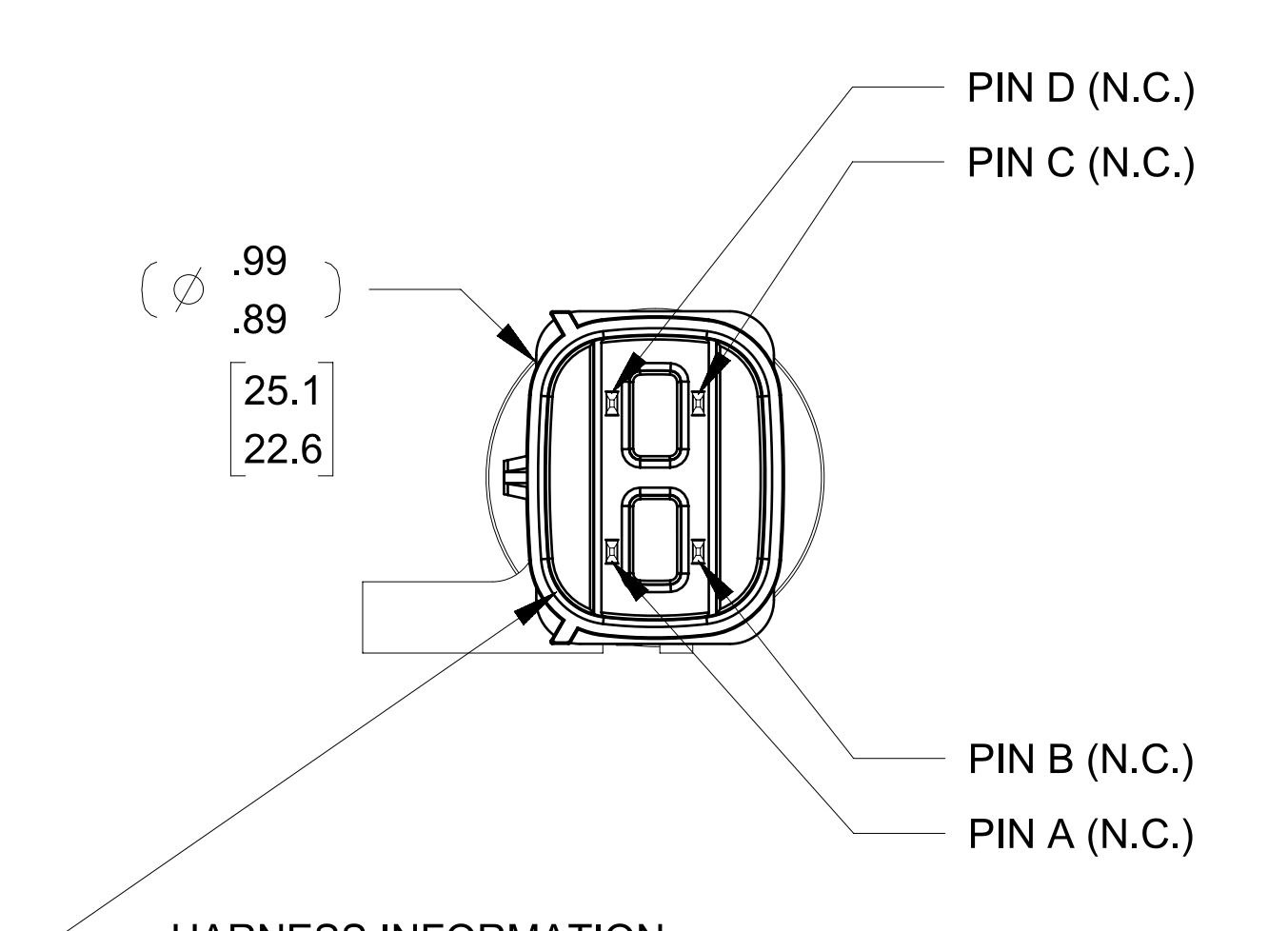
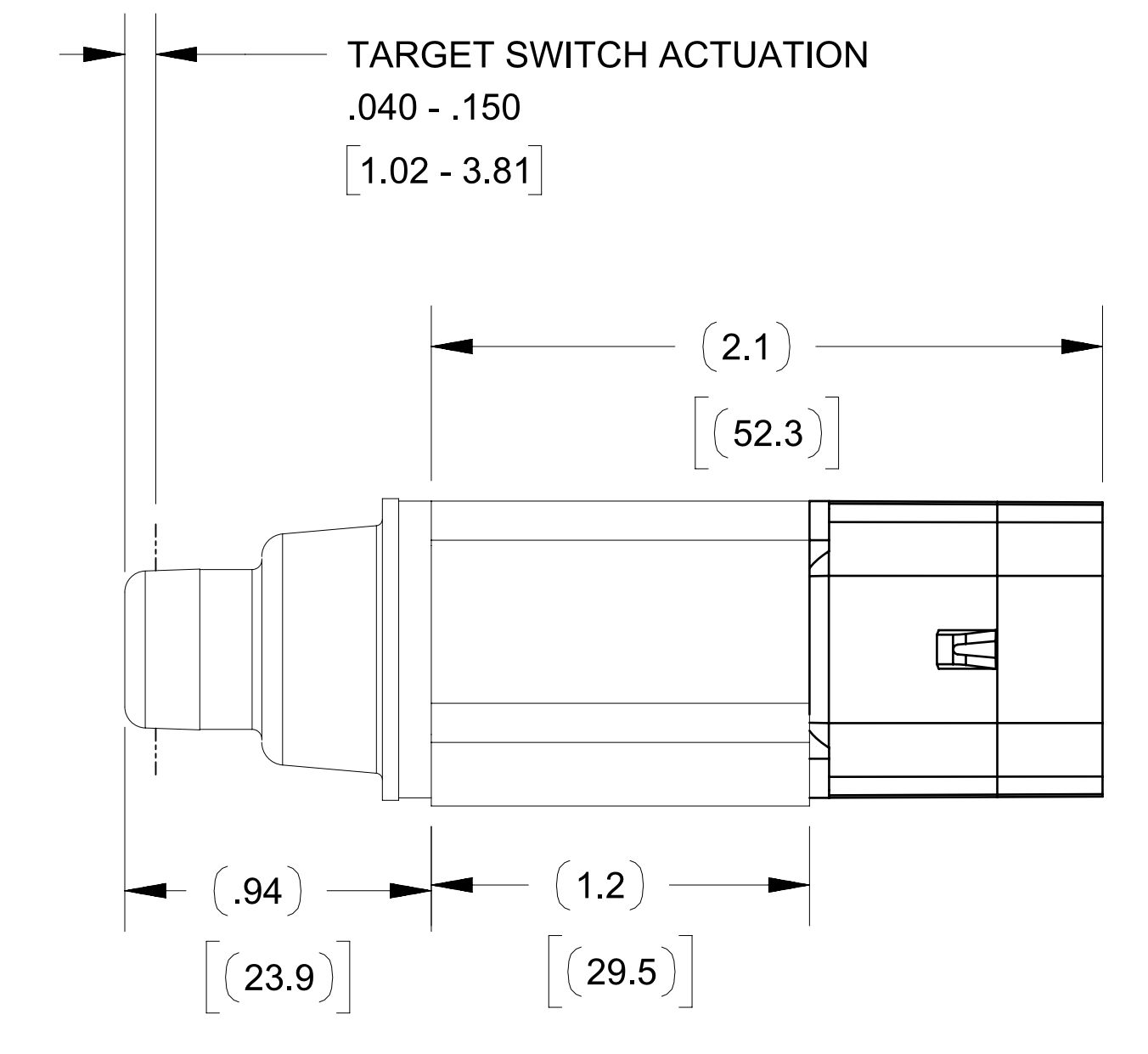
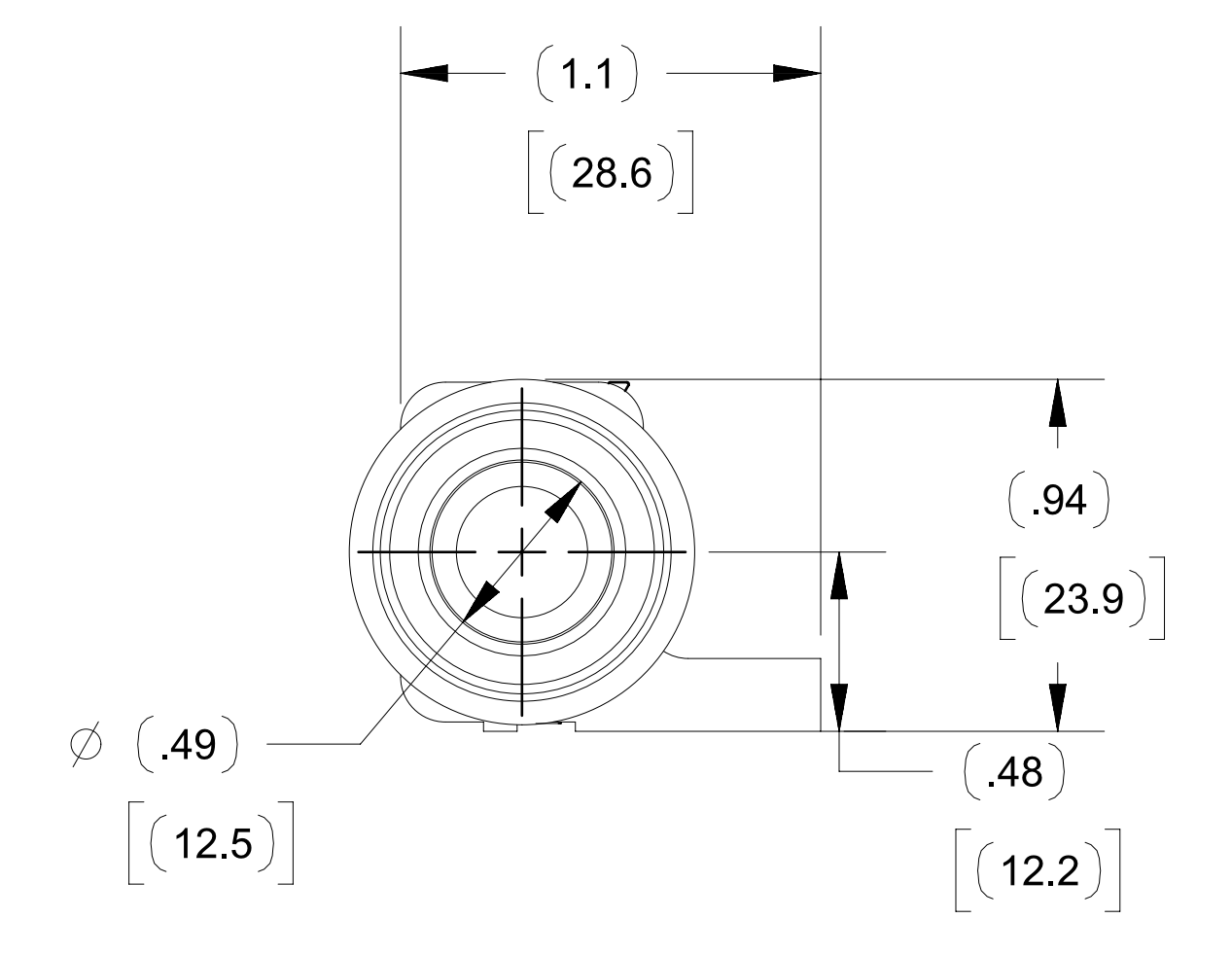
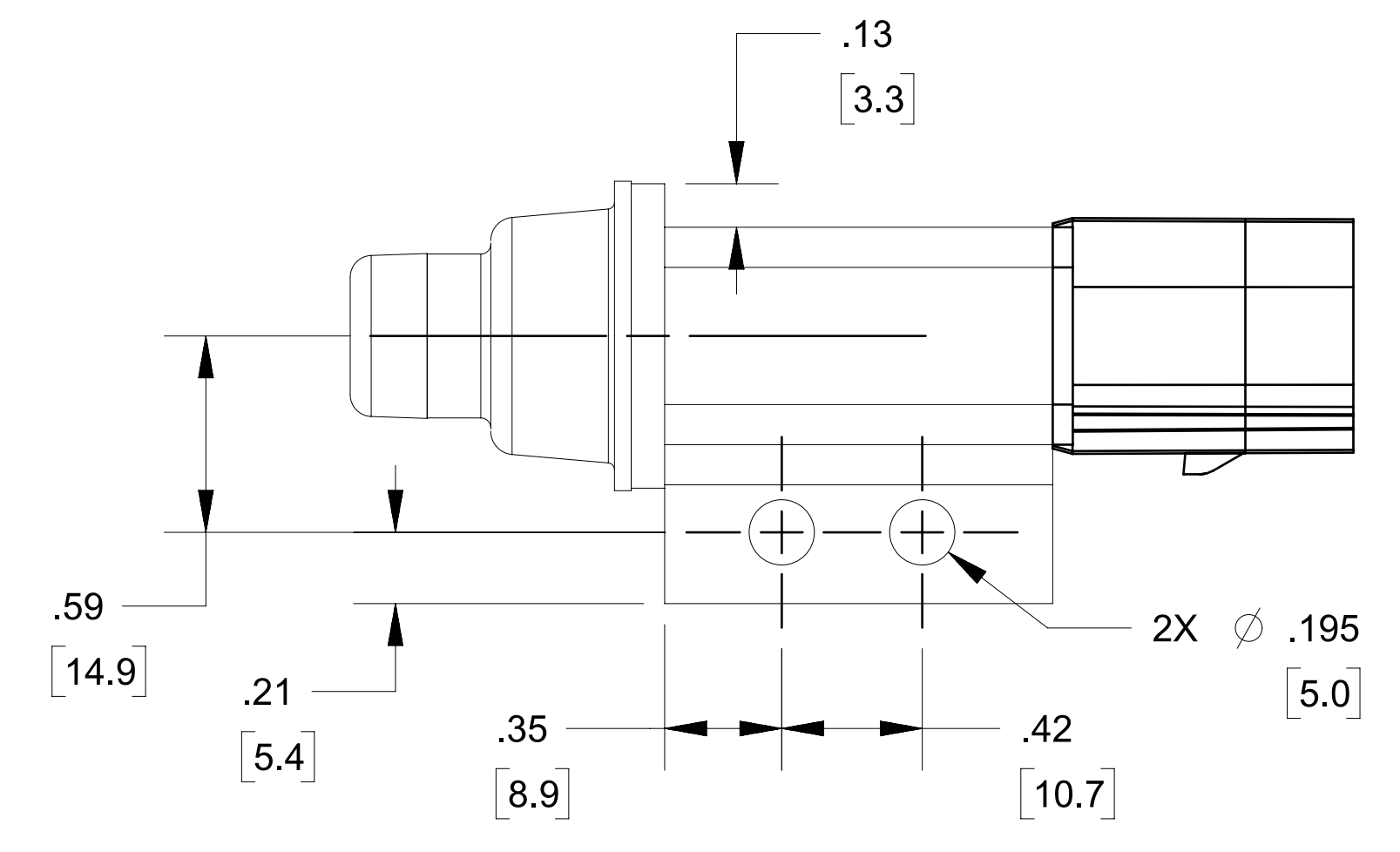
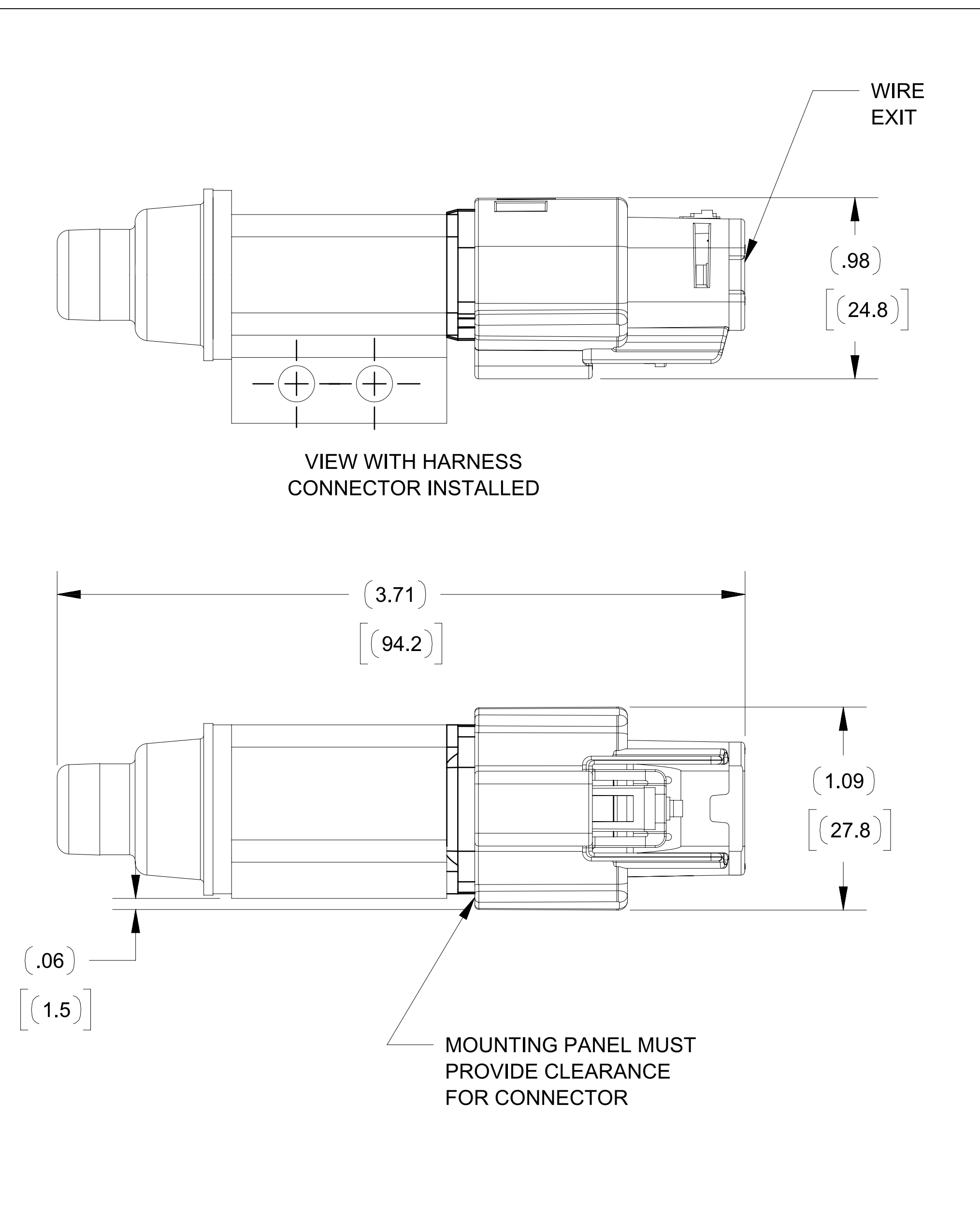
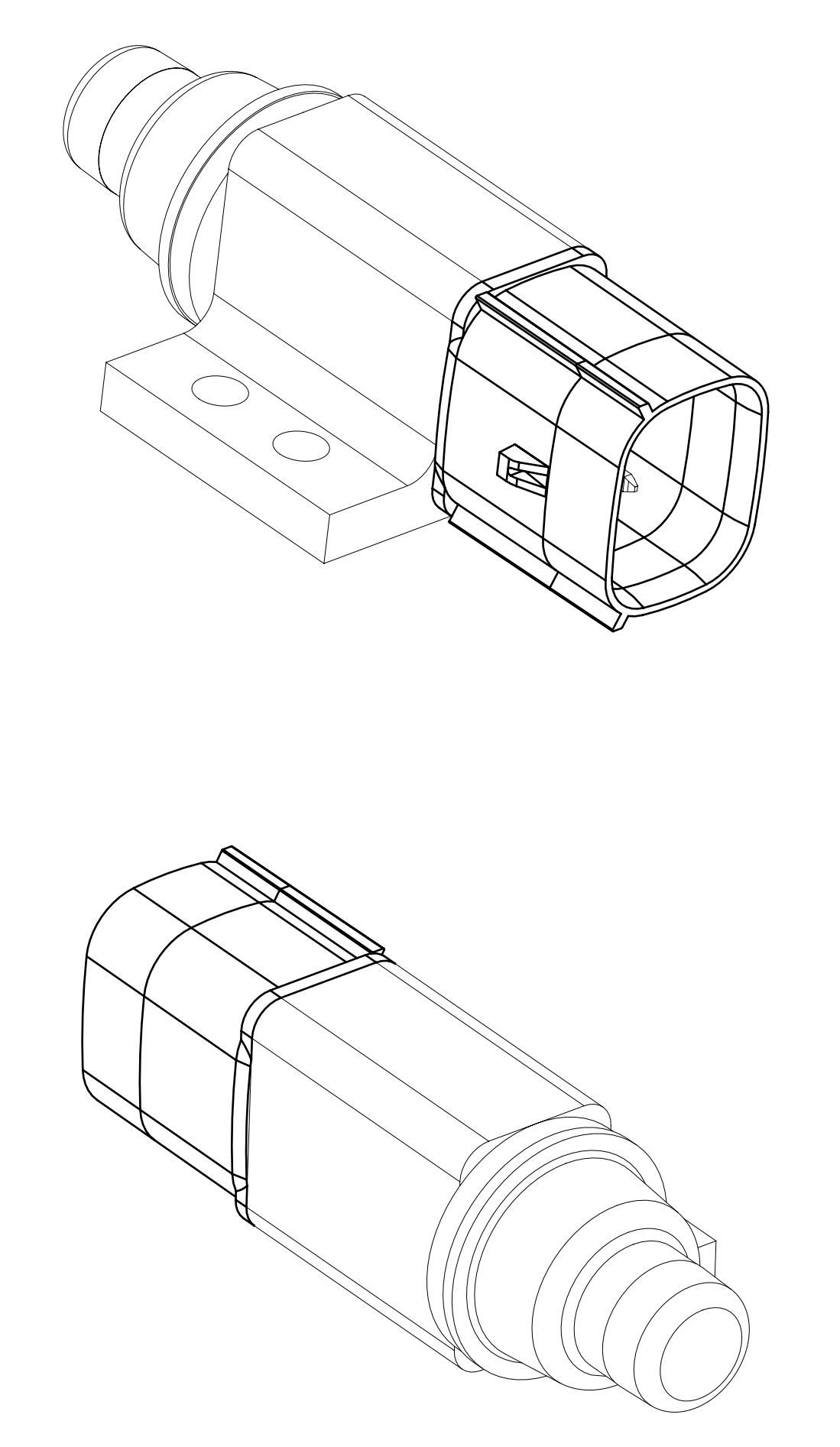


REVISIONS			
REV.	DESCRIPTION	DATE	INIT
0	INITIAL RELEASE	07/23/24	PJC



HARNESS INFORMATION:
 SWITCH MATES WITH MOLEX MX150 SERIES
 ASSEMBLY #33472-4801
 PIN A - MOLEX TERMINAL 1
 PIN B - MOLEX TERMINAL 5
 PIN C - MOLEX TERMINAL 8
 PIN D - MOLEX TERMINAL 4



- NOTES
- 1) DIMENSIONS IN BRACKETS ARE IN MILLIMETERS.
 - 2) SWITCH PASSES IEC IP67 WITH SEALED CONNECTOR INSTALLED.
 - 3) EACH ASSEMBLY IS LEAK TESTED BY PRESSURIZING (WITH AIR) THE INTERNAL VOLUME TO 2 PSIG. SWITCH MUST MAINTAIN AIR VOLUME WITHIN 0-1 SCC/MIN RATE OF CHANGE.
 - 4) USE CAVITY PLUG NUMBER 34345-0001 TO SEAL OFF UNUSED CONNECTOR CAVITIES.
 - 5) ELECTRICAL SPECIFICATIONS:
 LOAD: TYPICAL 0.7 AMPS AT 14.7 VDC
 TYPICAL 6 mA AT 63 VDC
 WHEN CONNECTED TO ELECTRONIC DEVICES, A MINIMUM OF 15 mA AT 12 VDC IS RECOMMENDED.
 - 6) DESIGN FOR A SWITCH BOUNCE OF 30ms.
 - 7) INTEGRITY OF WELD AND SWITCH FUNCTIONALITY TESTED AFTER ASSEMBLY.
 - 8) THE SWITCH BODY IS BLACK. THE PLUNGER IS GRAY.
 - 9) ACTUATION FORCE IS 6.2-9.9 LBS AT .400 INCH PLUNGER TRAVEL WITH SEALED CONNECTOR INSTALLED.
 - 10) MAXIMUM TRAVEL OF PLUNGER IS .40 INCH FROM REST POSITION.
 - 11) RECOMMENDED MOUNTING METHOD IS 2-#10 MACHINE OR SELF-TAPPING SCREWS. CLEARANCE HOLES FOR MOUNTING ARE PROVIDED IN THE SWITCH BODY. MAXIMUM TORQUE IS 30 IN-LBS.
 - 12) INTERPRET THIS DRAWING IN ACCORDANCE WITH ASME Y14.5-2009.

PROPRIETARY & CONFIDENTIAL THE INFORMATION CONTAINED IN THIS DRAWING IS THE SOLE PROPERTY OF DELTA SYSTEMS. ANY REPRODUCTION IN PART OR AS A WHOLE WITHOUT THE WRITTEN PERMISSION OF DELTA SYSTEMS IS PROHIBITED.	UNLESS OTHERWISE SPECIFIED DIMENSIONS ARE IN INCHES TOLERANCES ARE: .X ± .1 .XX ± .02 .XXX ± .005 X° ± 1	DRAWN pcolonna	DATE 30-May-2024	1734 FROST ROAD STREETSBORO, OHIO 44241 330-626-2811 WWW.DELTASYSTEMSINC.COM
		CHECKED rkawolics	DATE 23-Jul-2024	
DELTA SYSTEMS INC. DOES NOT ASSUME ANY LIABILITY ARISING OUT OF THE MISAPPLICATION OF ANY PRODUCT	COMPUTER GENERATED DRAWING - NO MANUAL CHANGES ALLOWED	APPROVED ikirbawy	DATE 29-Jul-2024	TITLE NC/NC Sealed Plunger Switch Heavy Spring
		MATERIAL -	FINISH -	PROJECTED VIEWS ARE 3RD ANGLE
DO NOT SCALE DRAWING		STATUS DS4_Design	DWG. NO. 6470-04_APP	SIZE C
		SCALE NTS	SHEET 1 OF 1	PROJECT NO. 403
				REVISION 0