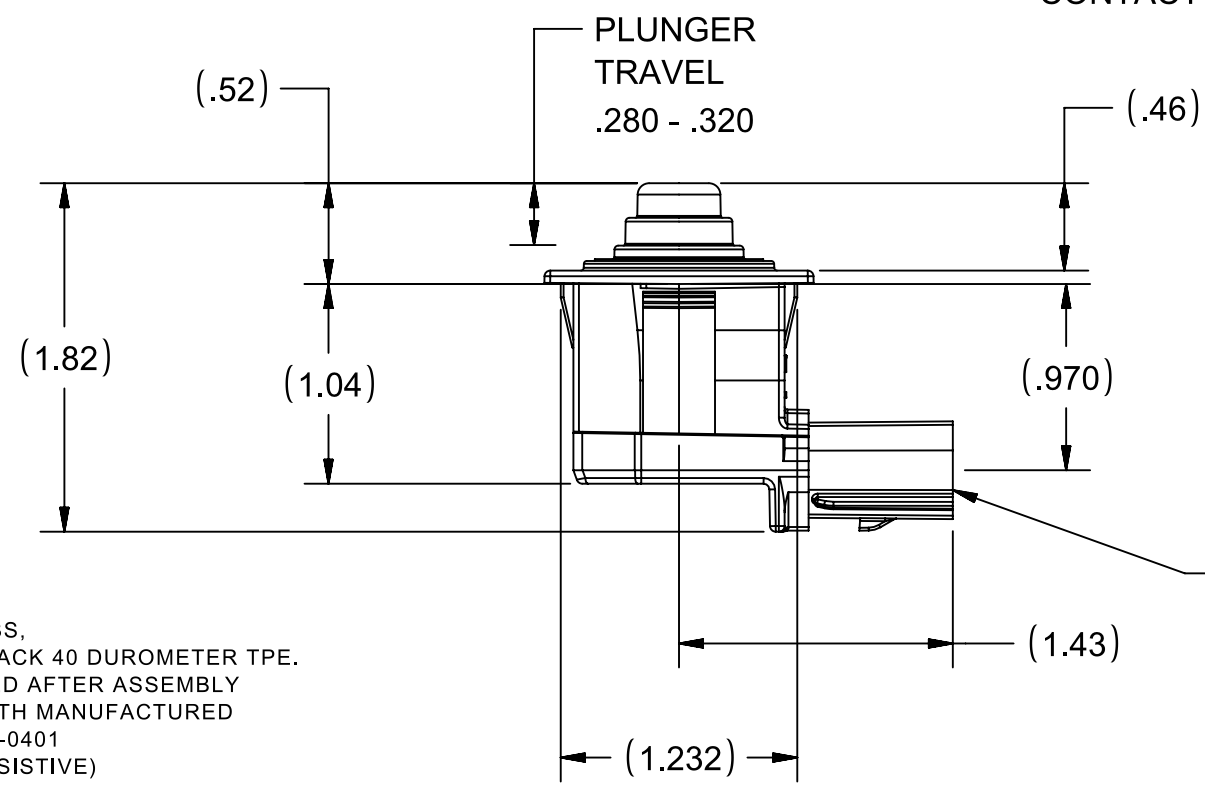
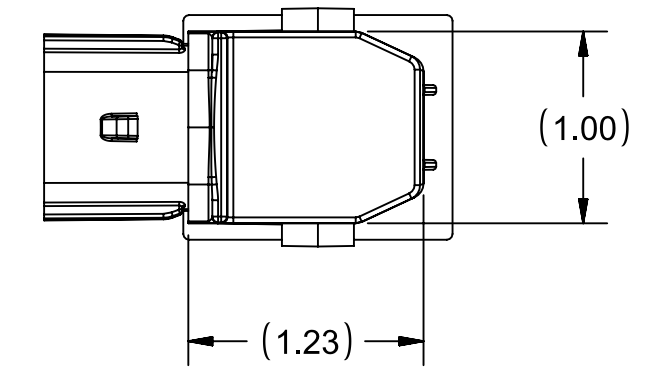
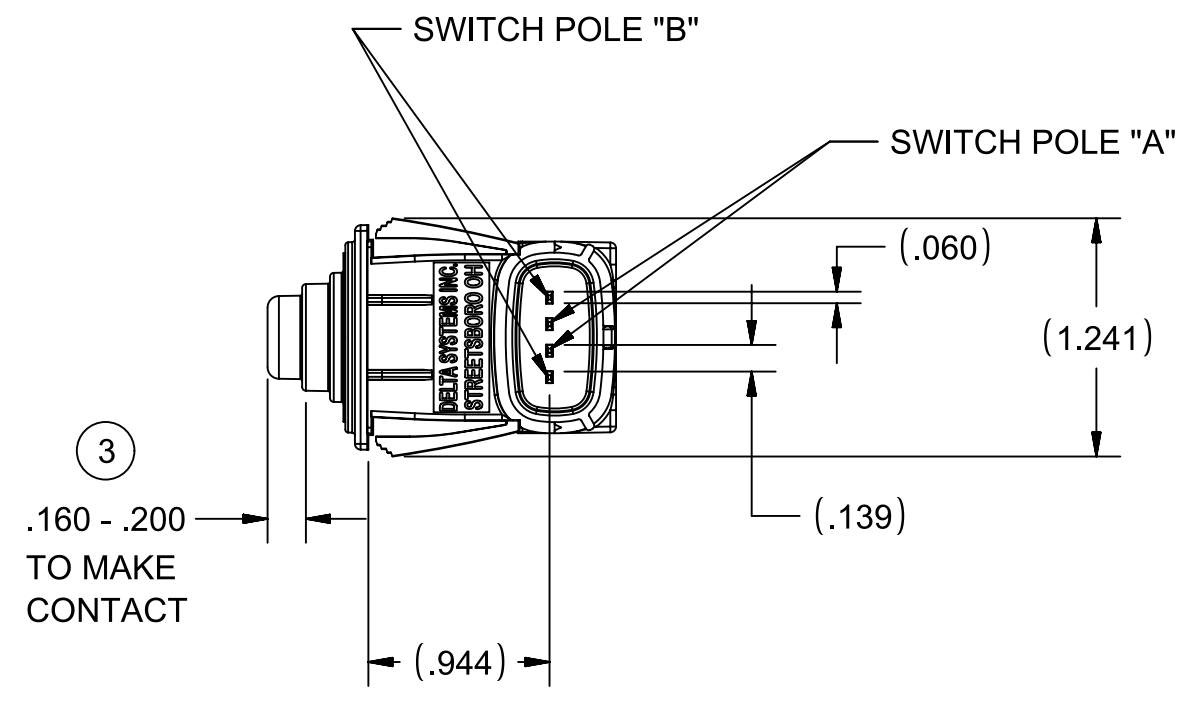
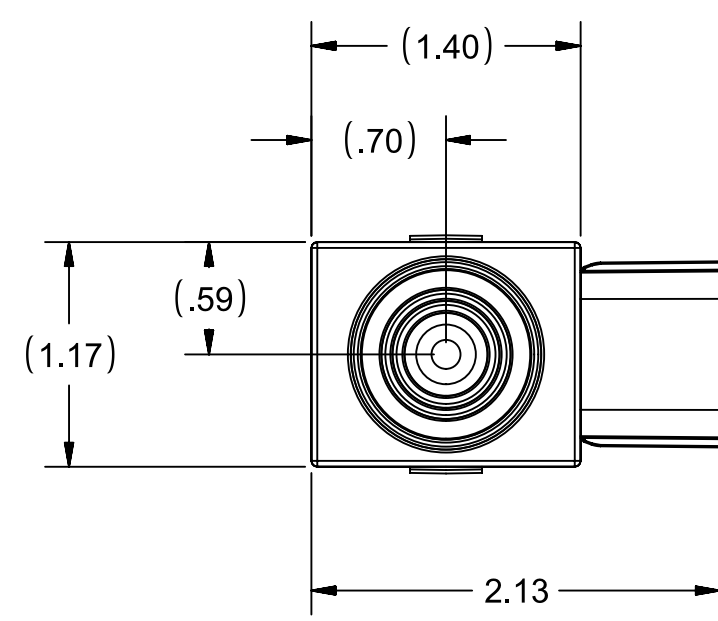
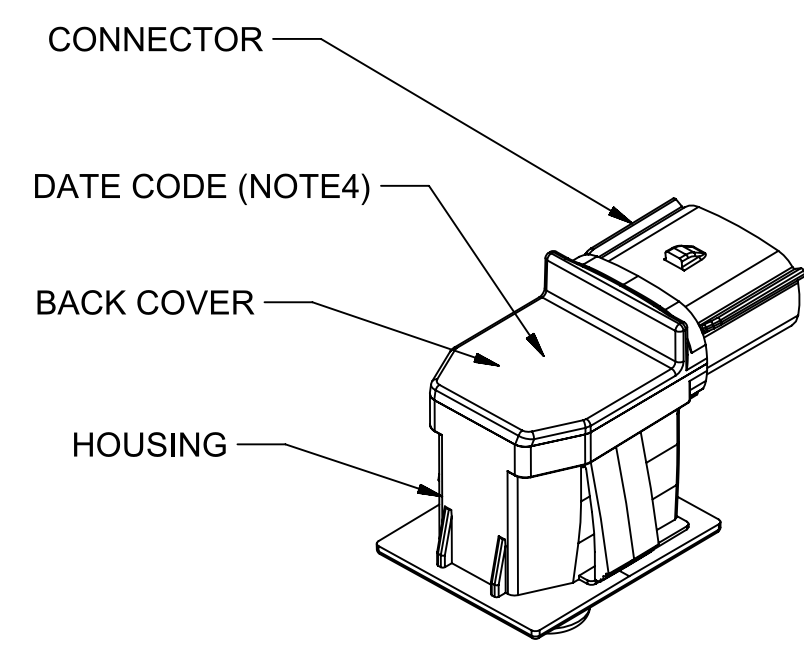
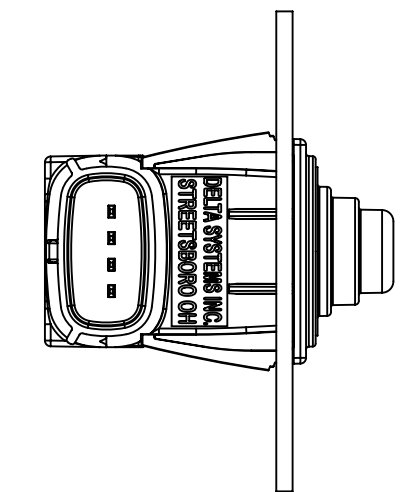
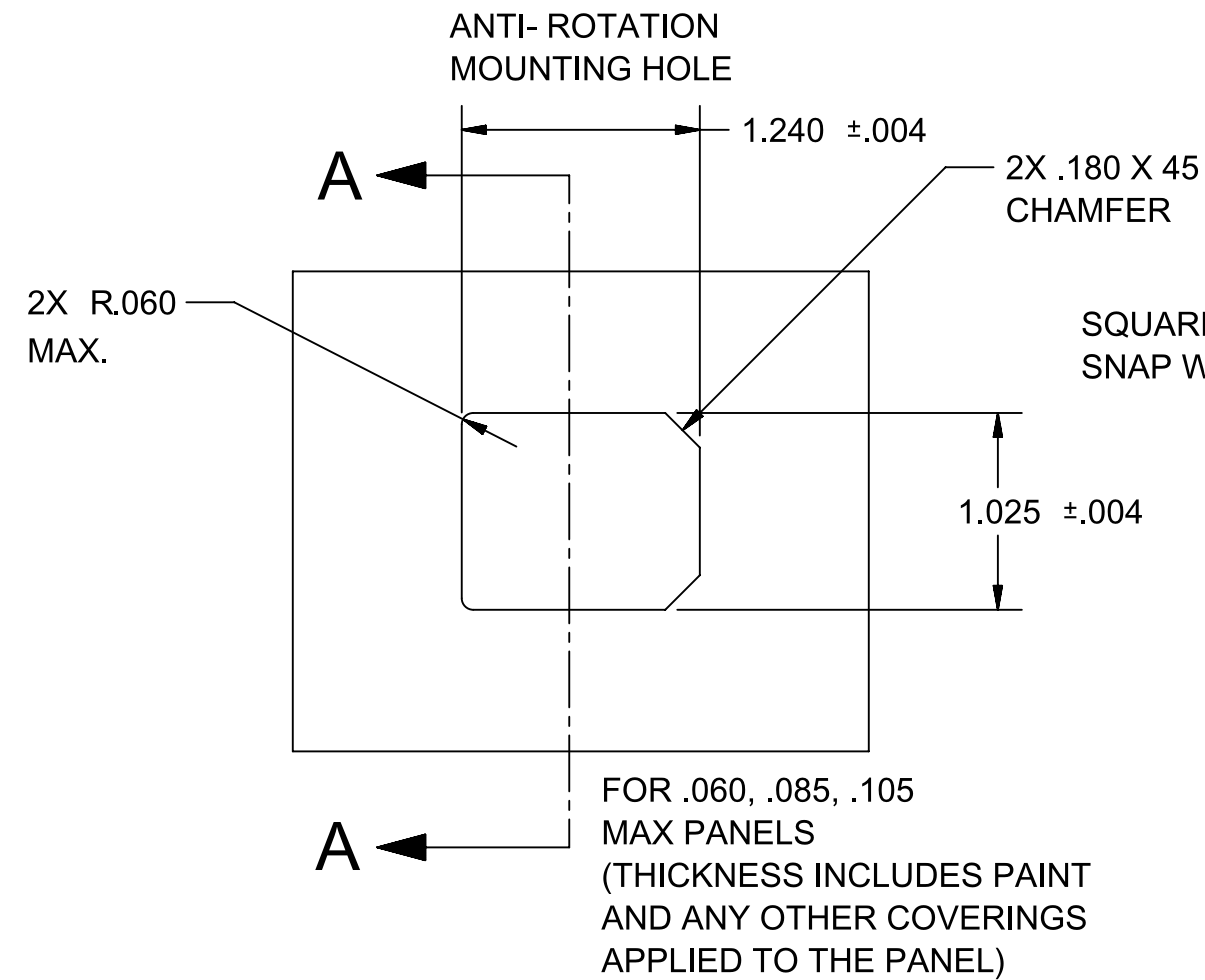
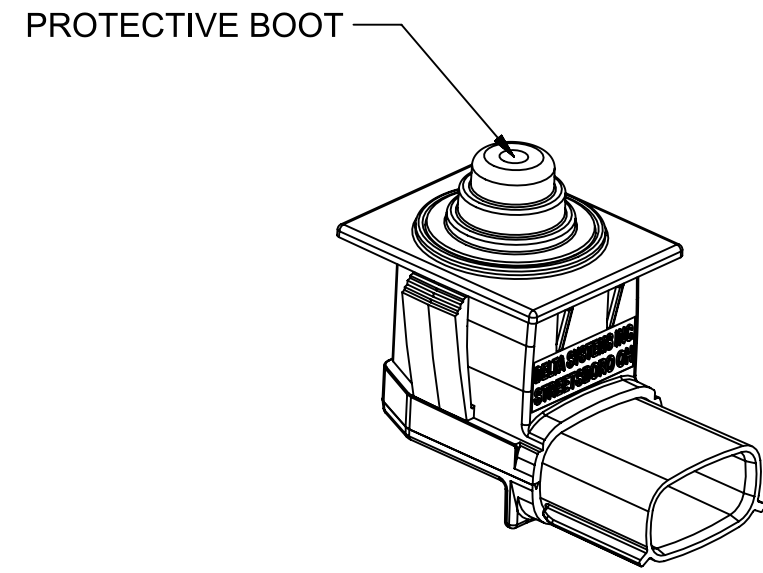


REVISIONS			
REV.	DESCRIPTION	DATE	INIT
0	INITIAL RELEASE	3/31/2021	DZ
1	UPDATED COMPONENTS	8/23/2021	DZ
2	"TO MAKE CONTACT" DIM .158-.182 WAS "TO MAKE OR BREAK CONTACTS" .070-.155, REVISED NOTE 12, .25" = 7.31 ± 1.51 LB WAS .25" = 5.1 ± 1.5 LB	08/30/22	PJC
3	REVISED NOTE 12, .160 -.200 WAS .158 -.182	10/05/22	PJC



- NOTES
- TERMINALS ARE NON-PLATED HALF HARD BRASS
  - HOUSING, BACK COVER & CONNECTOR ARE BLACK PC/ABS. PLUNGER IS POLYPROPYLENE, PROTECTIVE BOOT IS BLACK 40 DUROMETER TPE.
  - INTEGRITY OF WELD AND SWITCH FUNCTIONALITY TESTED AFTER ASSEMBLY
  - DATE CODE INDICATES YEAR, MONTH, AND DAY OF MONTH MANUFACTURED
  - MATING CONNECTOR MOLEX MX-150 SERIES 4 PIN 33471-0401
  - RATED 3A @12-14VDC (CYCLES = 10K INDUCTIVE; 75K RESISTIVE)
  - MINIMUM CURRENT: 10mA @ 12-14 VDC
  - MECHANICAL LIFE: 100K CYCLES
  - IP67 RATED
  - OPERATING TEMPERATURE: -30° C TO 85° C
  - 4X .060 X .030 MALE TERMINALS
  - ACTUATION FORCE IS 5.8 TO 8.8 LBS AT .25 INCH PLUNGER TRAVEL WITH SEALED CONNECTOR INSTALLED.
  - PLUNGER STATIC SIDE LOAD 4.0 LBS MINIMUM TO MAKE/BRAKE CONTACT (IN FOUR DIRECTIONS)
  - LIFE EXPECTANCY AND SWITCH PERFORMANCE ARE LARGELY DEPENDENT ON APPLICATION. IT IS THE USER'S RESPONSIBILITY TO DETERMINE SUITABILITY OF THIS PRODUCT FOR THE APPLICATION THIS INFORMATION IS INTENDED AS A GUIDE FOR PROPER APPLICATION.
  - MUST BE IN COMPLIANCE WITH DIRECTIVE 2011/65/EU OF THE EUROPEAN PARLIAMENT AND THE COUNCIL OF 8 JUNE 2011 ON THE RESTRICTION OF THE USE OF CERTAIN HAZARDOUS SUBSTANCES IN ELECTRICAL AND ELECTRONIC EQUIPMENT (ROHS DIRECTIVE)
  - INTERPRET THIS DRAWING IN ACCORDANCE WITH ASME Y14.5-2009

PROPRIETARY & CONFIDENTIAL THE INFORMATION CONTAINED IN THIS DRAWING IS THE SOLE PROPERTY OF DELTA SYSTEMS. ANY REPRODUCTION IN PART OR AS A WHOLE WITHOUT THE WRITTEN PERMISSION OF DELTA SYSTEMS IS PROHIBITED.	UNLESS OTHERWISE SPECIFIED DIMENSIONS ARE IN INCHES TOLERANCES ARE: .X± .1 .XX± .02 .XXX± .005 X°± 1	DRAWN dzlatic	DATE 07-Jan-2021	DELTA SYSTEMS 1734 FROST ROAD STREETSBORO, OHIO 44241 330-626-2811 WWW.DELTASYSTEMSINC.COM
		CHECKED rkawolics	DATE 09-Jul-2021	
DELTA SYSTEMS INC. DOES NOT ASSUME ANY LIABILITY ARISING OUT OF THE MISAPPLICATION OF ANY PRODUCT	COMPUTER GENERATED DRAWING - NO MANUAL CHANGES ALLOWED	APPROVED ikirbaw	DATE 12-Jul-2021	TITLE NO/NO SEALED PLUNGER SWITCH
		FINISH -	PROJECTED VIEWS ARE 3RD ANGLE	SIZE C
DO NOT SCALE DRAWING		STATUS DS4_Design	SCALE NTS	SHEET 1 OF 1
		PROJECT NO. 205	REVISION 3	DWG. NO. 6454-001_APP