

8

7

6

5

4

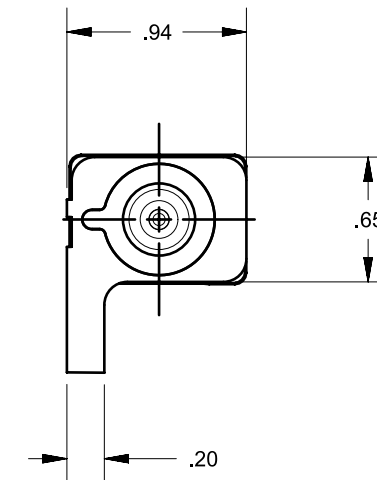
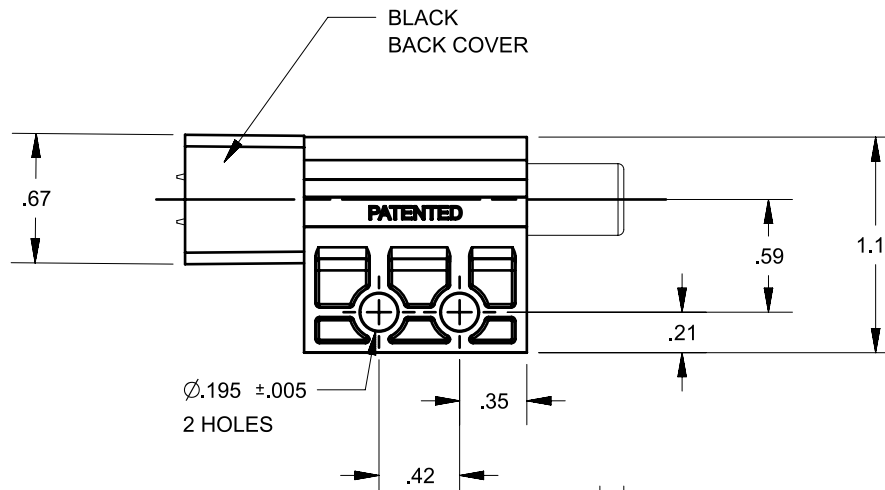
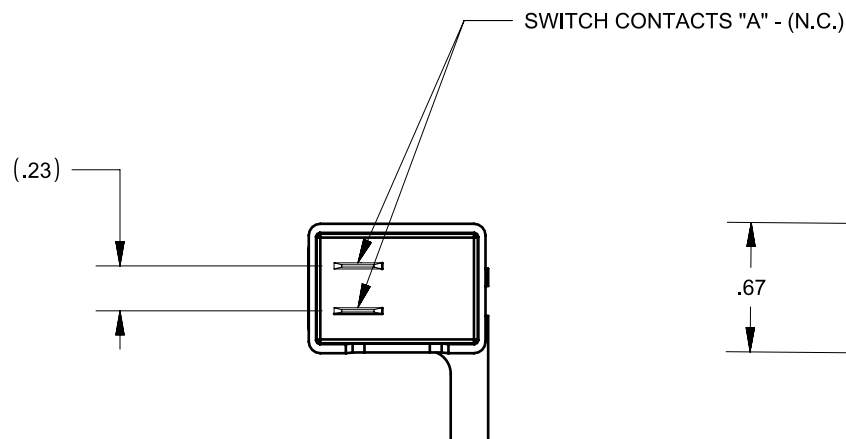
3

2

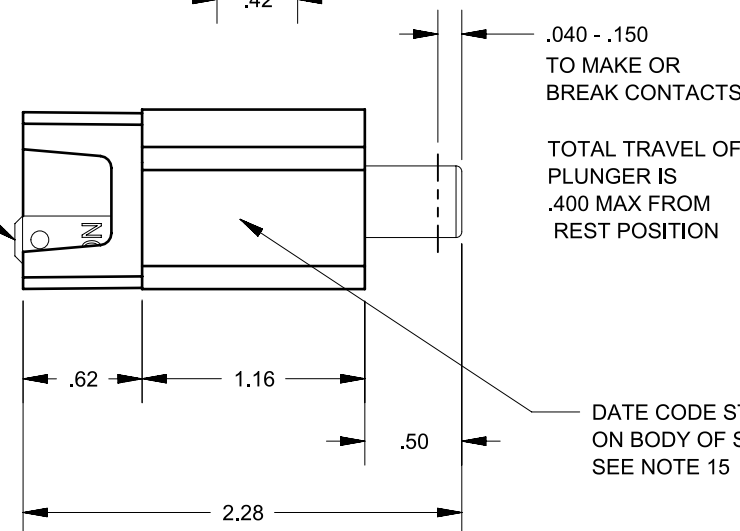
1

REVISIONS

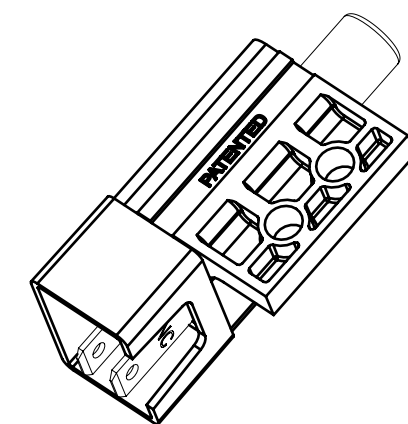
REV.	DESCRIPTION	DATE	INIT
0	INITIAL RELEASE	9/1/2021	DZ
1	ADDED "BLACK BACK COVER" NOTE TO PRINT	08/11/22	PJC
2	6404-05_B WAS 6404-05_A, HOUSING CHANGE	09/06/23	PJC



2X MALE TERMINALS 0.250 X 0.032
MATE WITH APTIVE (DELPHI) 02973872
FEMALE CONNECTOR (NOTE 16)



DATE CODE STAMPED
ON BODY OF SWITCH
SEE NOTE 15



NOTES:

- 1) INTERPRET THIS DRAWING IN ACCORDANCE WITH ASME Y14.5-2009.
- 2) IN COMPLIANCE WITH DIRECTIVE 2011/65/EU OF THE EUROPEAN PARLIAMENT AND THE COUNCIL OF 8 JUNE 2011 ON THE RESTRICTION OF THE USE OF CERTAIN HAZARDOUS SUBSTANCES IN ELECTRICAL AND ELECTRONIC EQUIPMENT (ROHS DIRECTIVE).
- 3) LIFE EXPECTANCY AND SWITCH PERFORMANCE ARE LARGELY DEPENDENT ON APPLICATION. IT IS THE USER'S RESPONSIBILITY TO DETERMINE SUITABILITY OF THIS PRODUCT FOR THE APPLICATION. THIS INFORMATION IS INTENDED AS A GUIDE FOR PROPER APPLICATION.
- 4) ELECTRICAL RATING: 3A @ 12-14VDC
- 5) ELECTRICAL LIFE AT RATED LOAD: 10K CYCLES INDUCTIVE, 75K CYCLES RESISTIVE
- 6) MECHANICAL LIFE: 100K CYCLES
- 7) OPERATING TEMPERATURE: -30°C TO 65°C
- 8) IP67 RATED
- 9) "NC" STAMPED ON ALL NORMALLY CLOSED TERMINALS
- 10) OPERATING FORCE: 7.5 LBS +/-1.2 LBS AT .400 TRAVEL
- 11) TOTAL TRAVEL OF PLUNGER IS .40 MIN FROM REST POSITION.
- 12) HOUSING PARTS ARE POLYPROPYLENE. PLUNGER IS ACETAL. HOUSING SEAL IS TPE.
- 13) TERMINALS ARE NICKEL PLATED
- 14) TERMINALS ARE SEALED WITH BLACK POTTING
- 15) DATE CODE INDICATING YEAR, MONTH AND DAY OF MONTH MANUFACTURED STAMPED ON HOUSING.
- 16) 2X .250 X .032 MALE SPADE TERMINALS, MATES WITH APTIV (DELPHI) 02973872 FEMALE CONNECTOR

PROPRIETARY & CONFIDENTIAL THE INFORMATION CONTAINED IN THIS DRAWING IS THE SOLE PROPERTY OF DELTA SYSTEMS. ANY REPRODUCTION IN PART OR AS A WHOLE WITHOUT THE WRITTEN PERMISSION OF DELTA SYSTEMS IS PROHIBITED.	UNLESS OTHERWISE SPECIFIED DIMENSIONS ARE IN INCHES TOLERANCES ARE: .X± .1 .XX± .02 .XXX± .005 X°± 1°	DRAWN dzlatic	DATE 01-Sep-2021	 1734 FROST ROAD STREETSBORO, OHIO 44241 330-626-2811 WWW.DELTASYSTEMSINC.COM		
		CHECKED pcolonna	DATE 15-Dec-2021			
APPROVED ikirbawy	DATE 16-Dec-2021	PROJECTED VIEWS ARE 3RD ANGLE 				
MATERIAL -	FINISH -	STATUS DS4_Design				
DELTA SYSTEMS INC. DOES NOT ASSUME ANY LIABILITY ARISING OUT OF THE MISAPPLICATION OF ANY PRODUCT	COMPUTER GENERATED DRAWING - NO MANUAL CHANGES ALLOWED	DO NOT SCALE DRAWING	TITLE NC SEALED PLUNGER SWITCH ASSEMBLY	SIZE B	DWG. NO. 6404-05_APP	
			SCALE NTS	SHEET 1 OF 1	PROJECT NO. 134	REVISION 2

8

7

6

5

4

3

2

1